

Somerville Ave Utility and Streetscape Improvements

Public Meeting

Mayor Joseph A. Curtatone
Alderman Maryann Heuston
Alderman Bob McWatters

Presented by

Jessica Fosbrook, PE, ENV SP, Project Manager, Capital Projects & Planning
Brad Rawson, Director of Transportation and Infrastructure, OSPCD
Rich Raiche, Director of Engineering, Capital Projects & Planning

May 18th, 2017, Argenziano School Cafeteria

What We're Covering Tonight



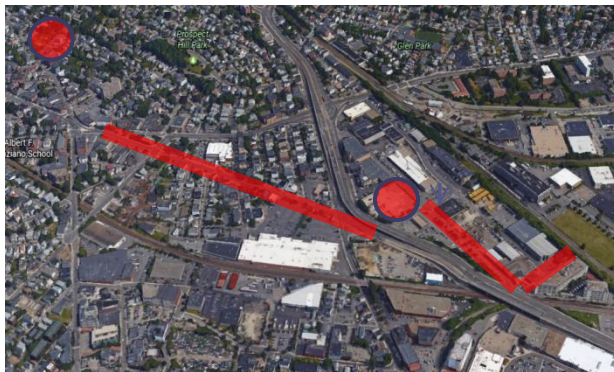
Union Square
Neighborhood Plan



Project Need



Project Scope



Integration with
Other Projects



Construction
Overview



Questions

What We're Covering Tonight



**Union Square
Neighborhood Plan**



Project Need



Project Scope



**Integration with
Other Projects**



**Construction
Overview**



Questions

Union Square Neighborhood Plan

An architectural rendering of Union Square, showing a vibrant, pedestrian-friendly urban environment. In the foreground, people are seated at outdoor cafe tables under large umbrellas. A dedicated bike lane with bollards runs alongside the sidewalk. In the background, there are multi-story buildings, trees, and a clock tower. The scene is bright and sunny, suggesting a pleasant climate.

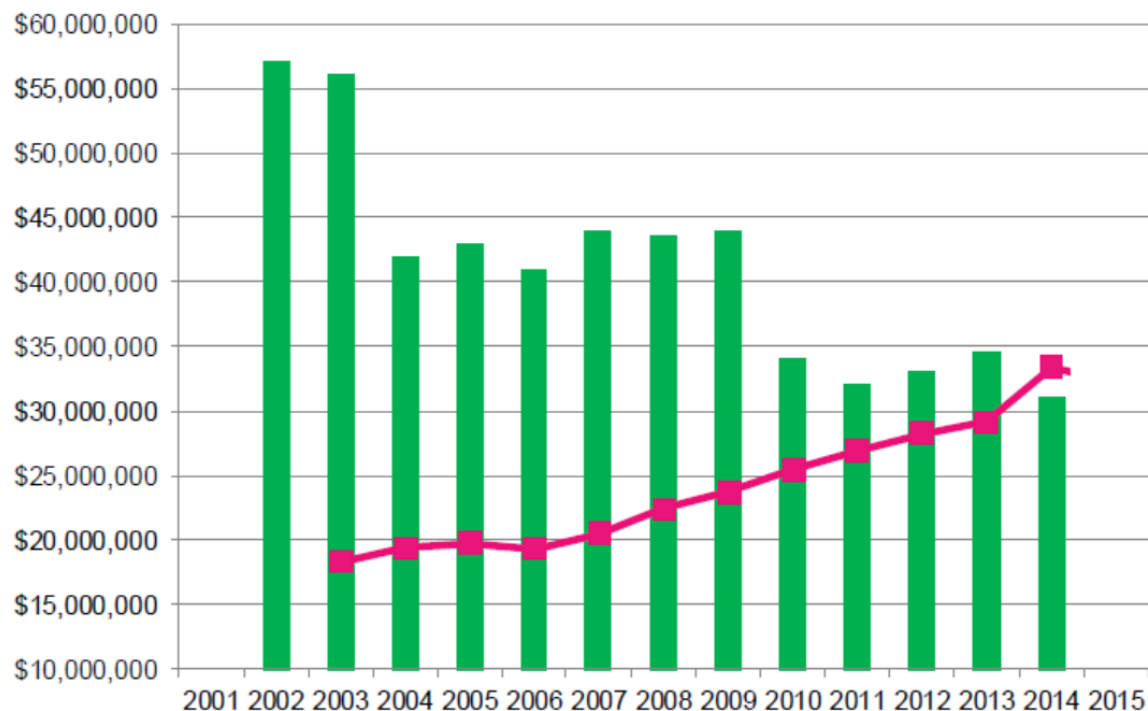
- 2 year public process

- Infrastructure needs incorporated

- Pedestrian, bike, bus users prioritized

Fiscal Sustainability Goals

STATE AID VS. COMMERCIAL TAX YIELDS



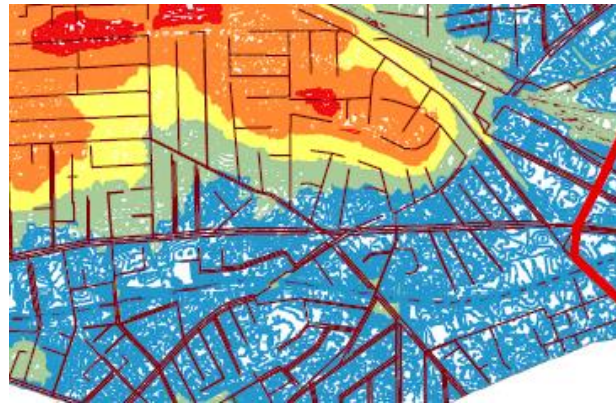
STATE AID  COMMERCIAL TAX 

- Growth in the commercial tax base mitigates increases to residential taxes as state aid decreased.
- Commercial growth also brings jobs. There were just over 14% more jobs in Somerville in 2015 than in 2001.
- Commercial growth brings people into the City who patronize local businesses.

What We're Covering Tonight



Union Square
Neighborhood Plan



Project Need



Project Scope



Integration with
Other Projects

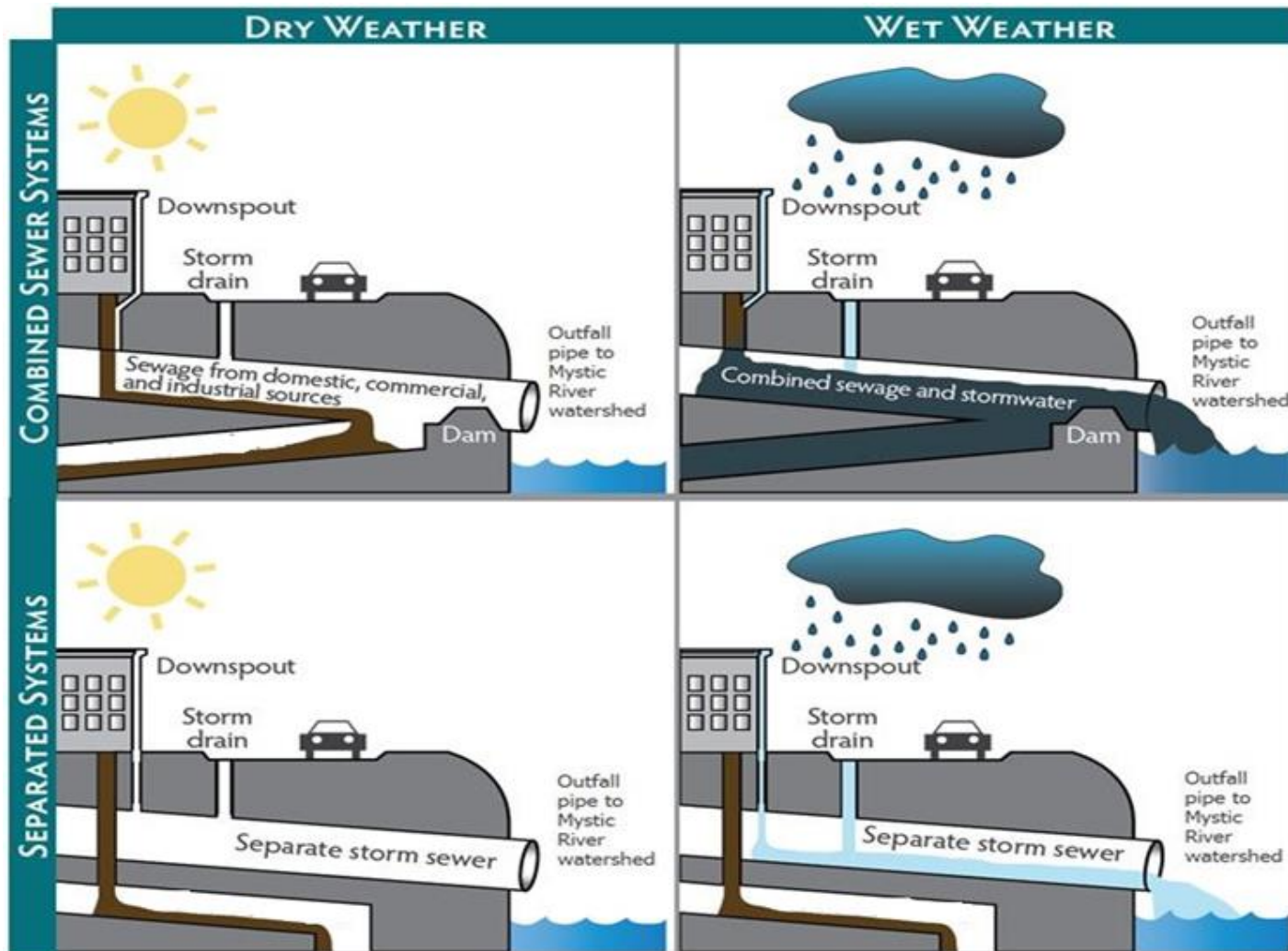


Construction
Impacts



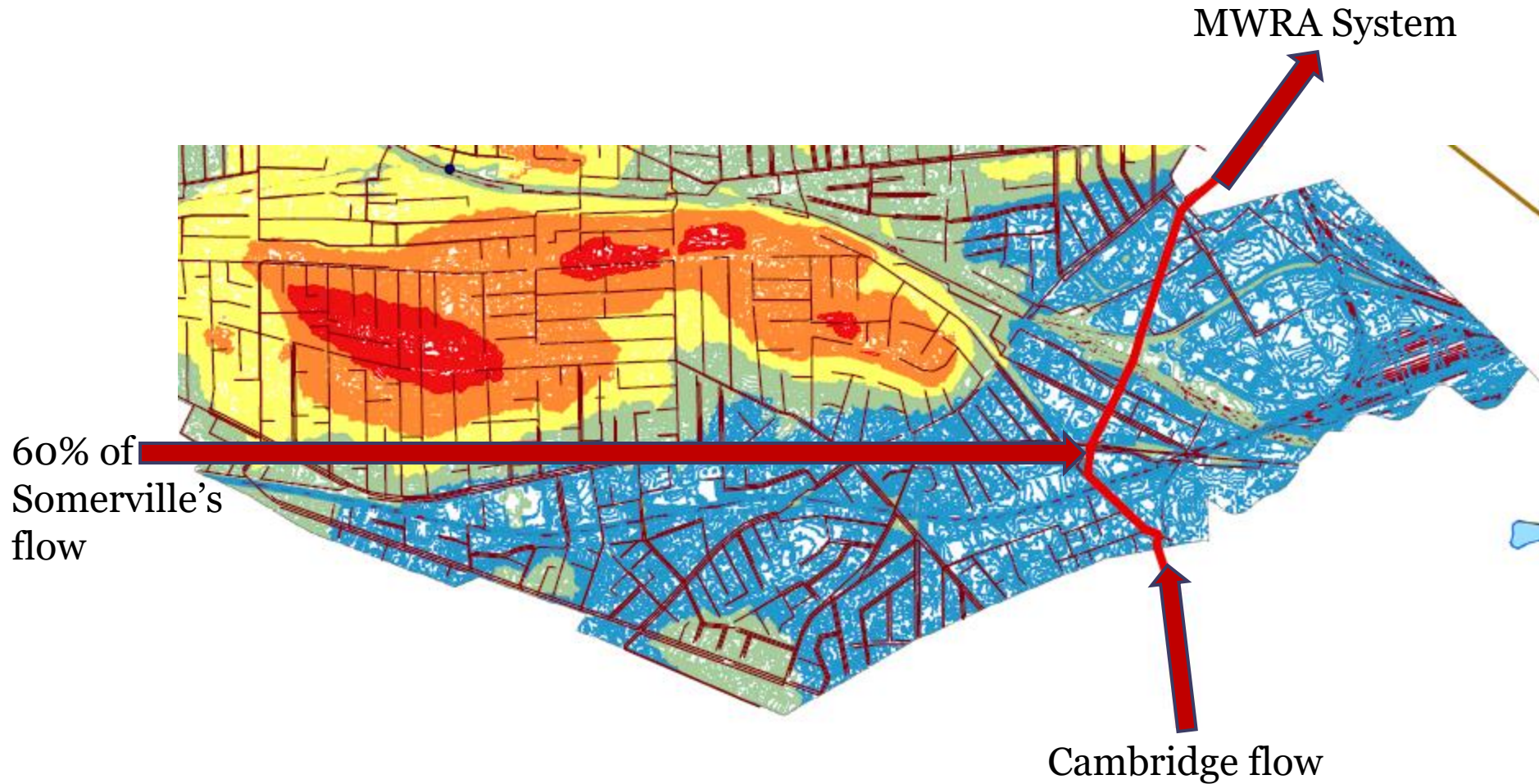
Questions

Storm drains, sanitary sewers and combined systems



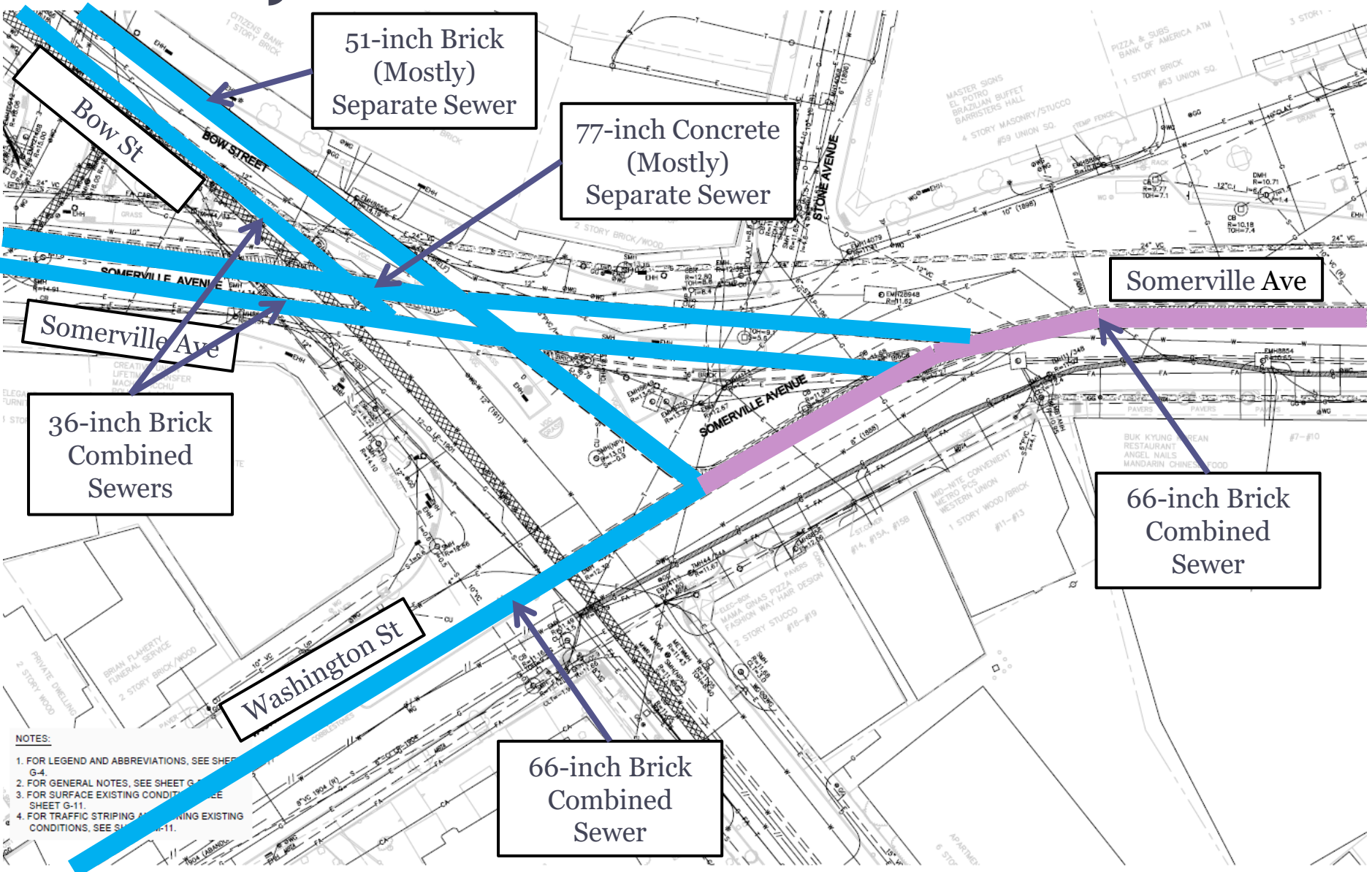
Credit: Toole Design Group

Union Square - 60% of Flows



- Uphill / Up-pipe areas all contribute to flooding

Old System



- NOTES:**
1. FOR LEGEND AND ABBREVIATIONS, SEE SHEET G-4.
 2. FOR GENERAL NOTES, SEE SHEET G-4.
 3. FOR SURFACE EXISTING CONDITIONS, SEE SHEET G-11.
 4. FOR TRAFFIC STRIPING AND SIGNING EXISTING CONDITIONS, SEE SHEET G-11.

More Background on Infrastructure Needs

- Infrastructure Needs presentation -
Board of Aldermen Committee Meeting April 27th, 2017
http://somervillecityma.ig2.com/Citizens/Detail_Meeting.aspx?ID=2443 (Item 41, Minute 26)



What We're Covering Tonight



**Union Square
Neighborhood Plan**



Project Need



Project Scope



**Integration with
Other Projects**

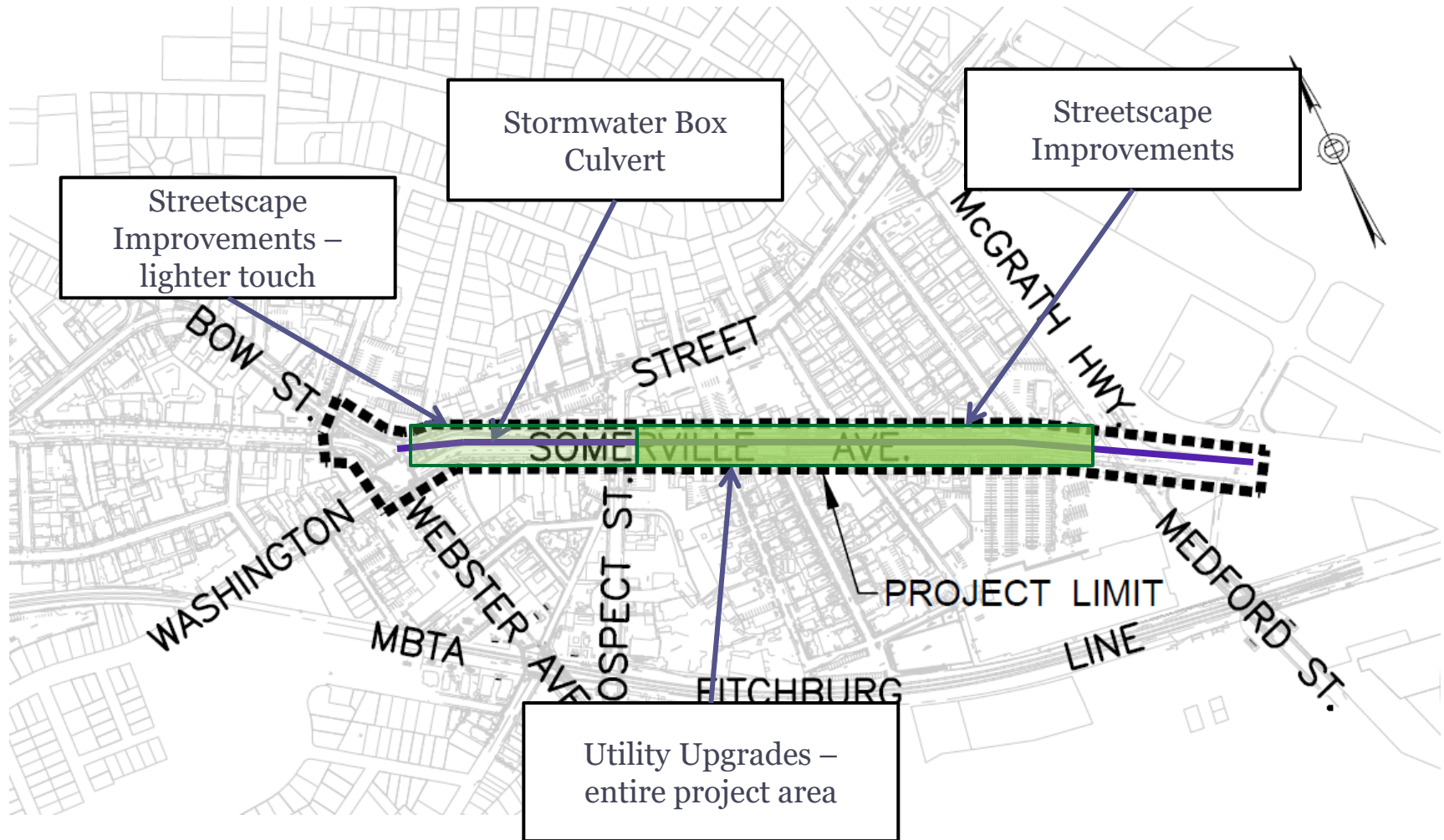


**Construction
Impacts**



Questions

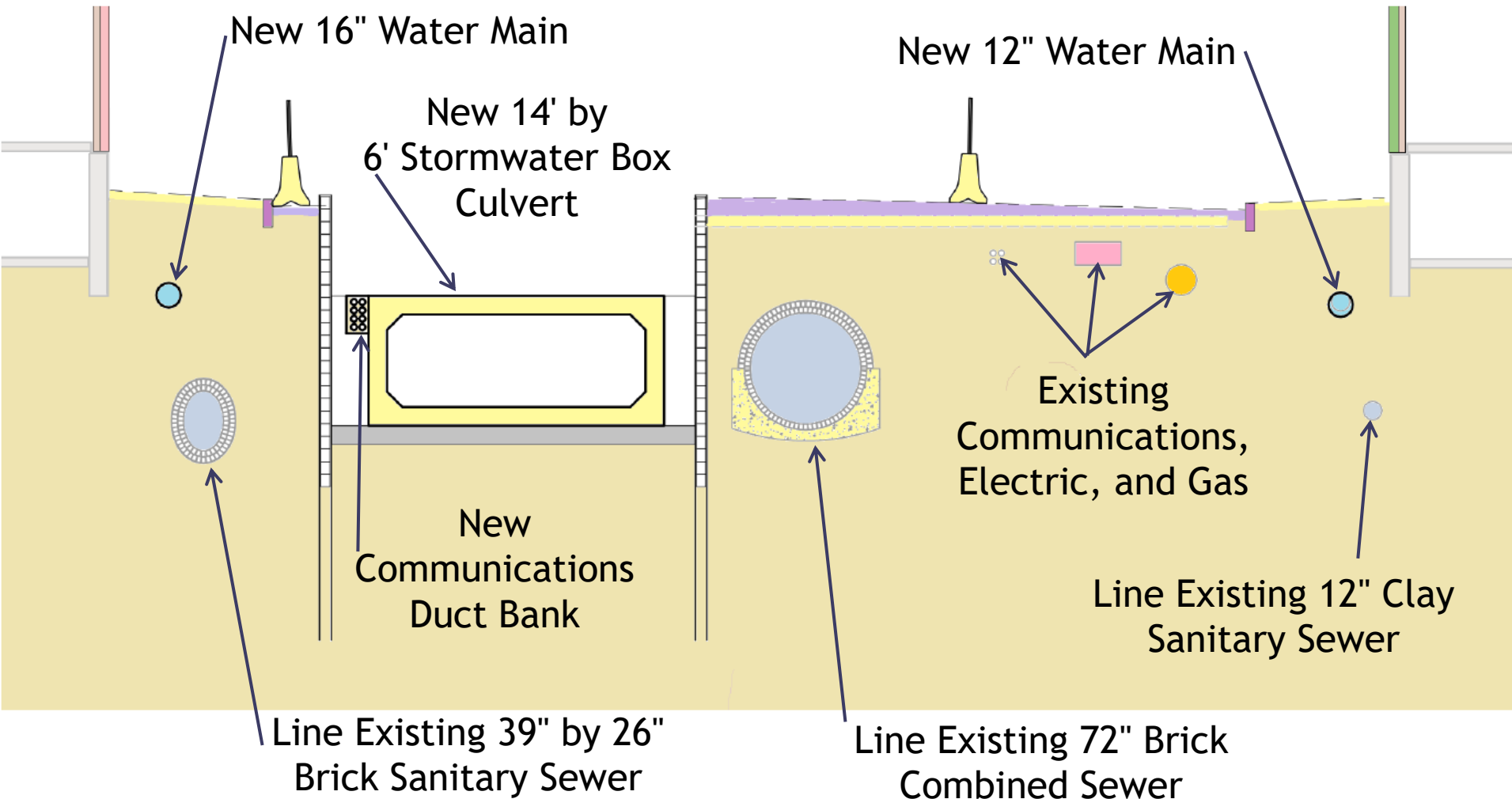
Project Extents



Utilities



Box Culvert and Utilities - Cross-Section







Streetscape Enhancements



Bicycling for All Ages & All Abilities



Photo Credit: Toole Design Group

Stormwater Green Infrastructure

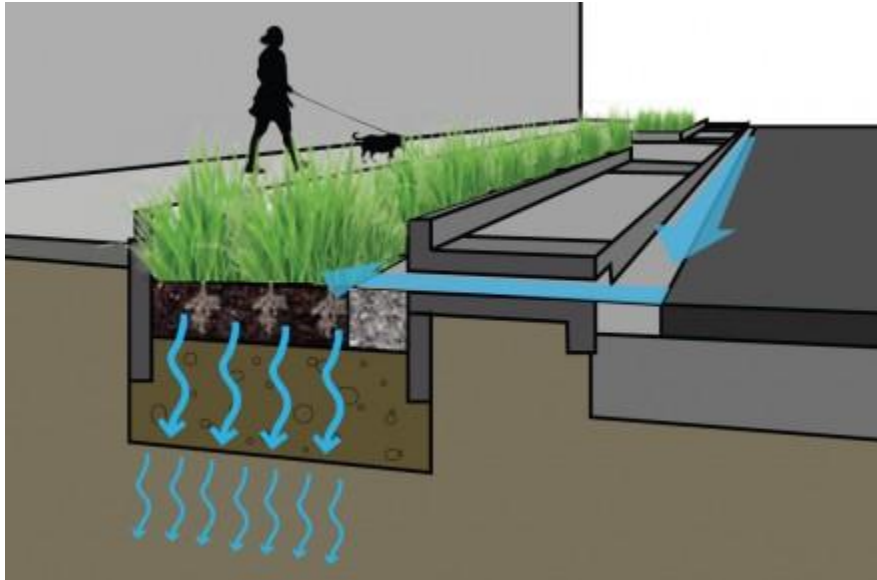


Photo Credit: HOK Product Design

Would capture 25% of runoff from project area average sized storms

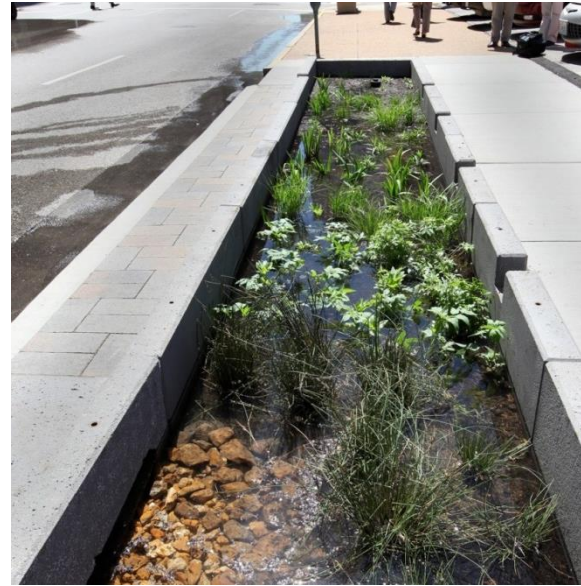


Photo Credit: HOK Product Design

Porous asphalt, landscaping, and more would add 0.7 acres of permeable space



Photo Credit: State College PA



Photo Credit: ilustrous.wordpress.com



Photo Credit: Toole Design Group

Enhanced Tree Growth



Photo Credit: DeepRoot

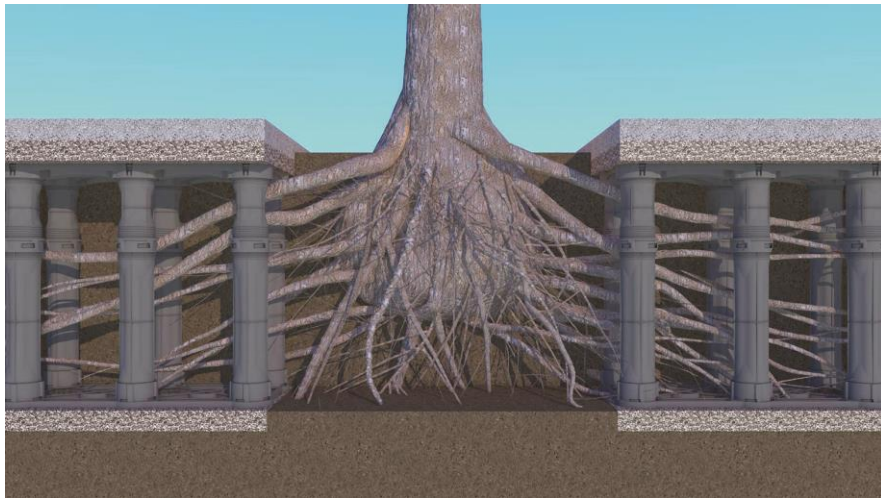


Photo Credit: DeepRoot

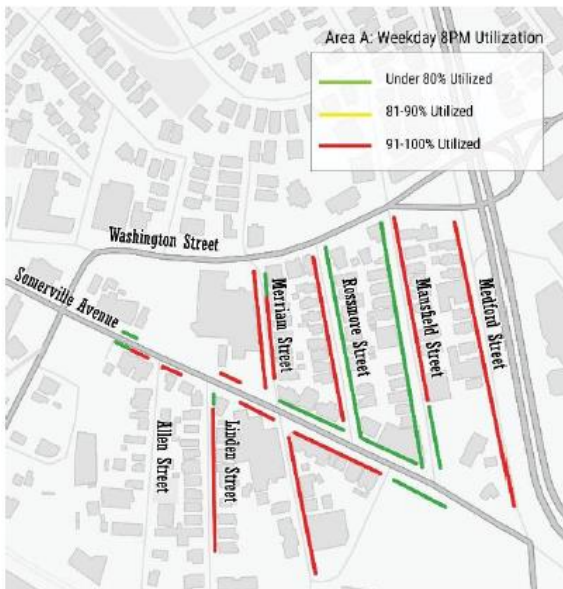
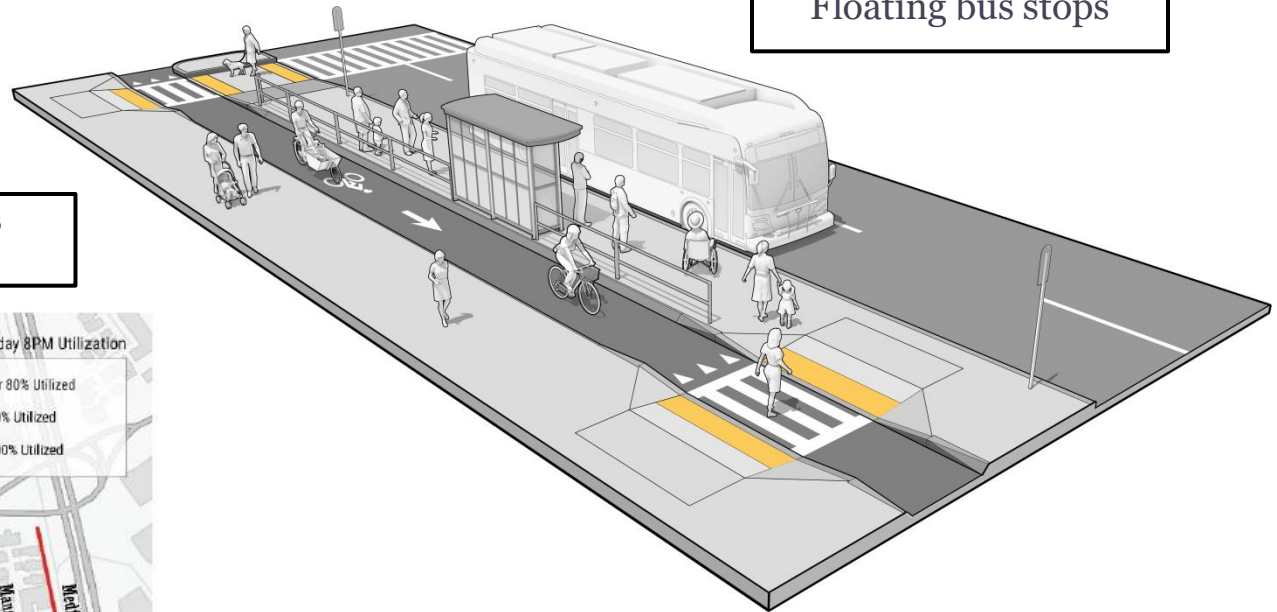


Photo Credit: DeepRoot

Curbside Amenities

Parking analysis
completed

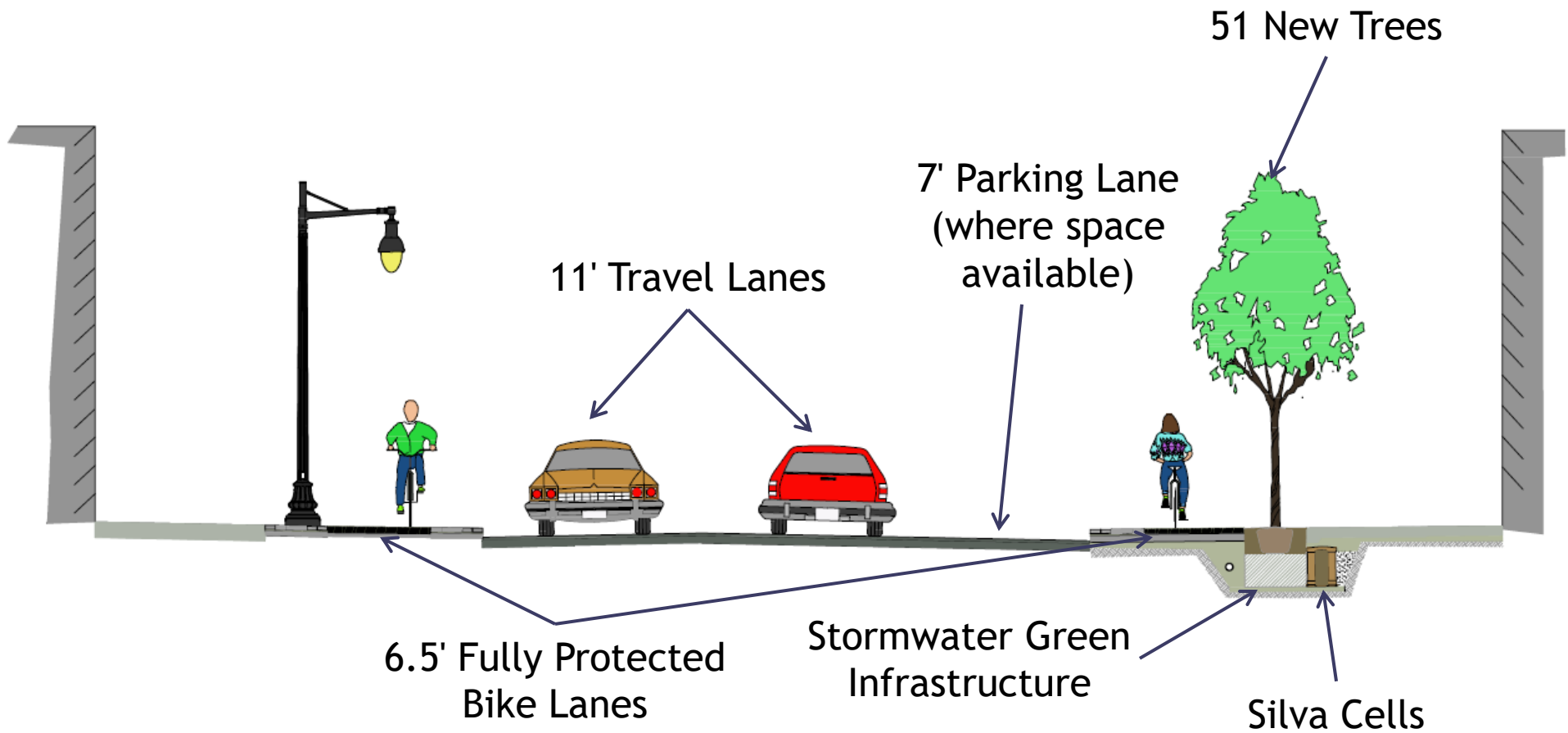
Floating bus stops



*Image Credit: Toole Design Group for the
MassDOT Separated Bike Lane Guide.*

Image Credit: Toole Design Group

Streetscape - Typical Section



What We're Covering Tonight



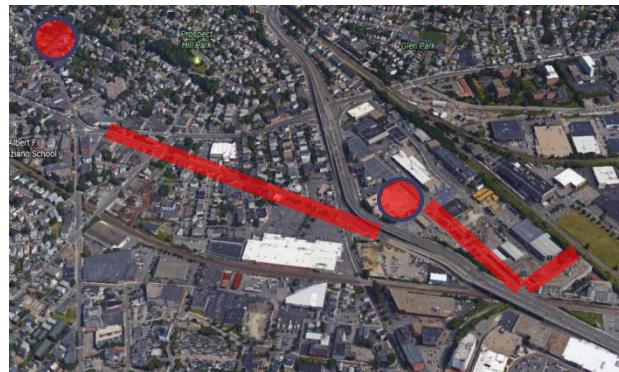
**Union Square
Neighborhood Plan**



Project Need



Project Scope



**Integration with
Other Projects**



**Construction
Overview**

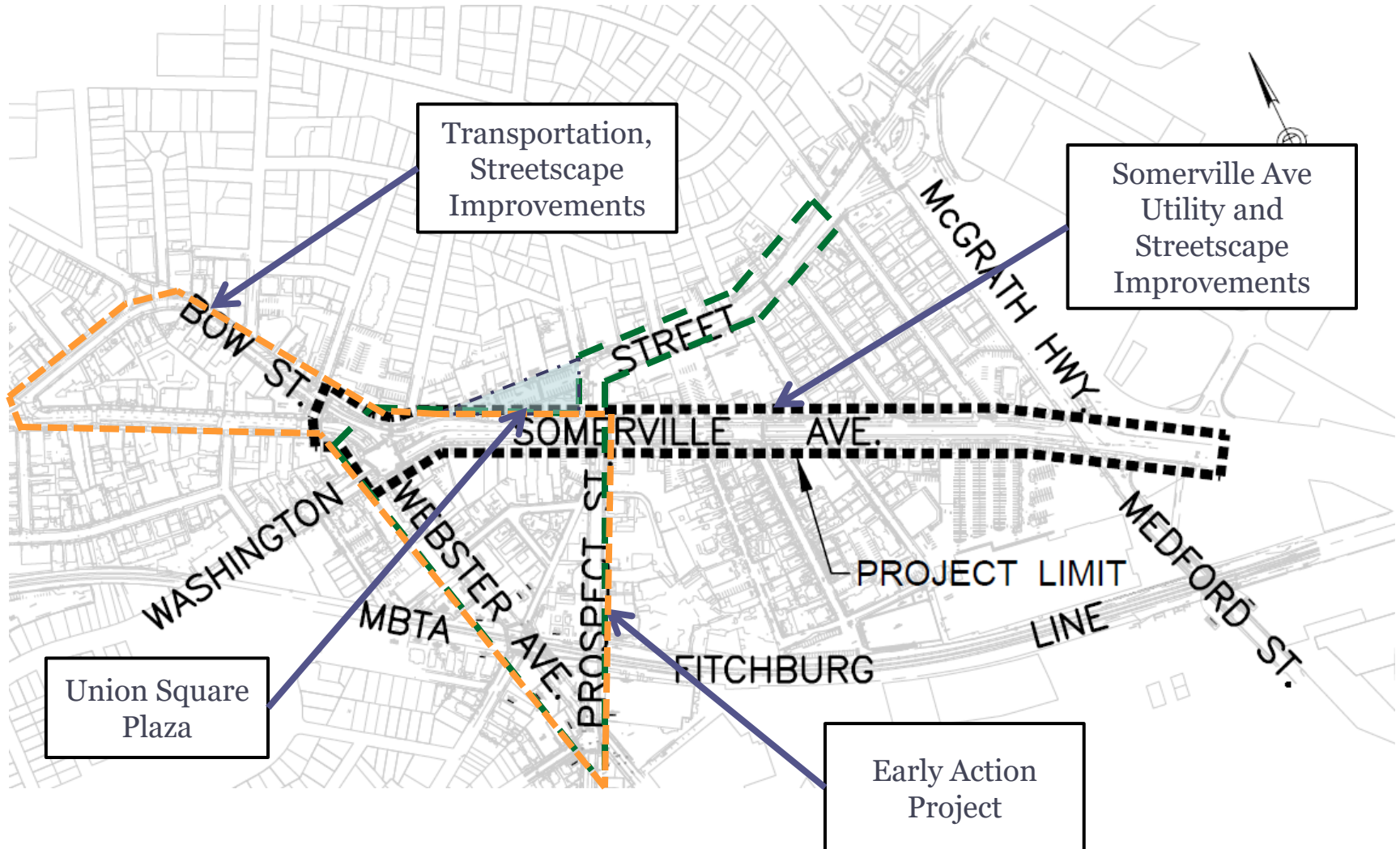


Questions

Related Infrastructure Projects



Related Streetscape Projects



What We're Covering Tonight



Union Square
Neighborhood Plan



Project Need



Project Scope



Integration with
Other Projects



Construction
Overview



Questions

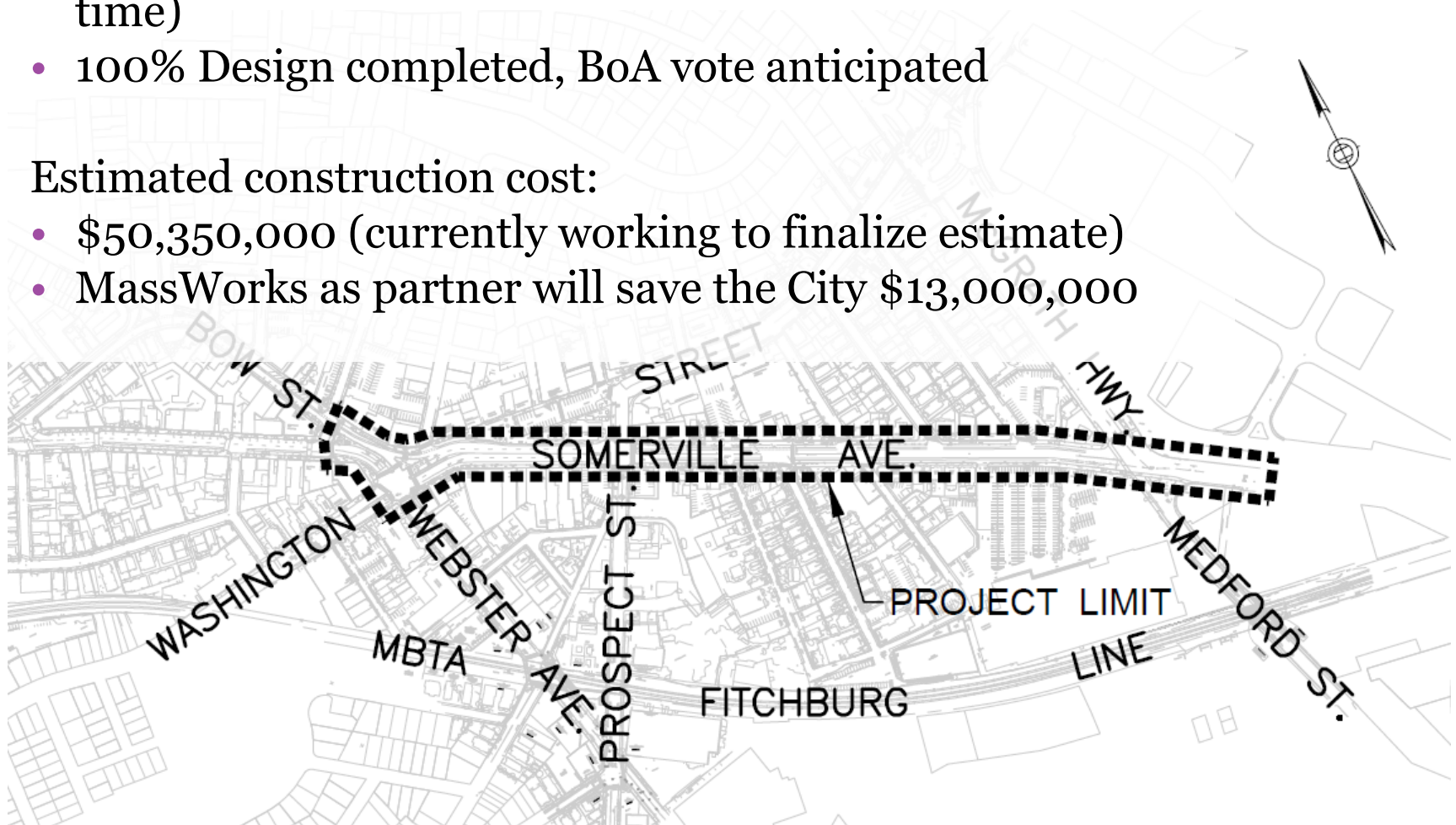
Construction Overview

Estimated construction timeframe:

- 3 full construction seasons (3 years if we start in spring time)
- 100% Design completed, BoA vote anticipated

Estimated construction cost:

- \$50,350,000 (currently working to finalize estimate)
- MassWorks as partner will save the City \$13,000,000



Future Meetings



What We're Covering Tonight



Union Square
Neighborhood Plan



Project Need



Project Scope



Integration with
Other Projects



Construction
Overview



Questions

Questions?

Contact Info:

Jessica Fosbrook, Project Manager – Utilities, Capital Projects & Planning

jfosbrook@somervillema.gov

617-625-6600 ext. 5124

Website:

<http://www.somervillema.gov/unionsquareinfrastructure>