

west branch library | somerville, ma | COMMUNITY MEETING | 01.08.18



designLAB architects
G2 Collaborative



AGENDA

6.00_{PM}

1 | OPENING

2 | MEETING GOALS

6.15_{PM}

3 | PROCESS TO DATE

6.25_{PM}

4 | REVIEW UPDATED DESIGN

6.45_{PM}

5 | DISCUSSION, Q&A

8.00_{PM}

6 | END OF MEETING

TEAM INTRODUCTION

CITY OF SOMERVILLE

mayor: Joseph A. Curtatone

ward 6 alderman: Lance Davis

BUILDING COMMITTEE:

capital projects: Robert King, Director
Robert Cassano, Project Manager
Debora Mitrano, Project Assistant

library director: Glenn Ferdman, Library Director
west branch library: Karen Kramer
library board of trustees: Katherine L. Van Sleet, President
library board of trustees: Peter Scheidler

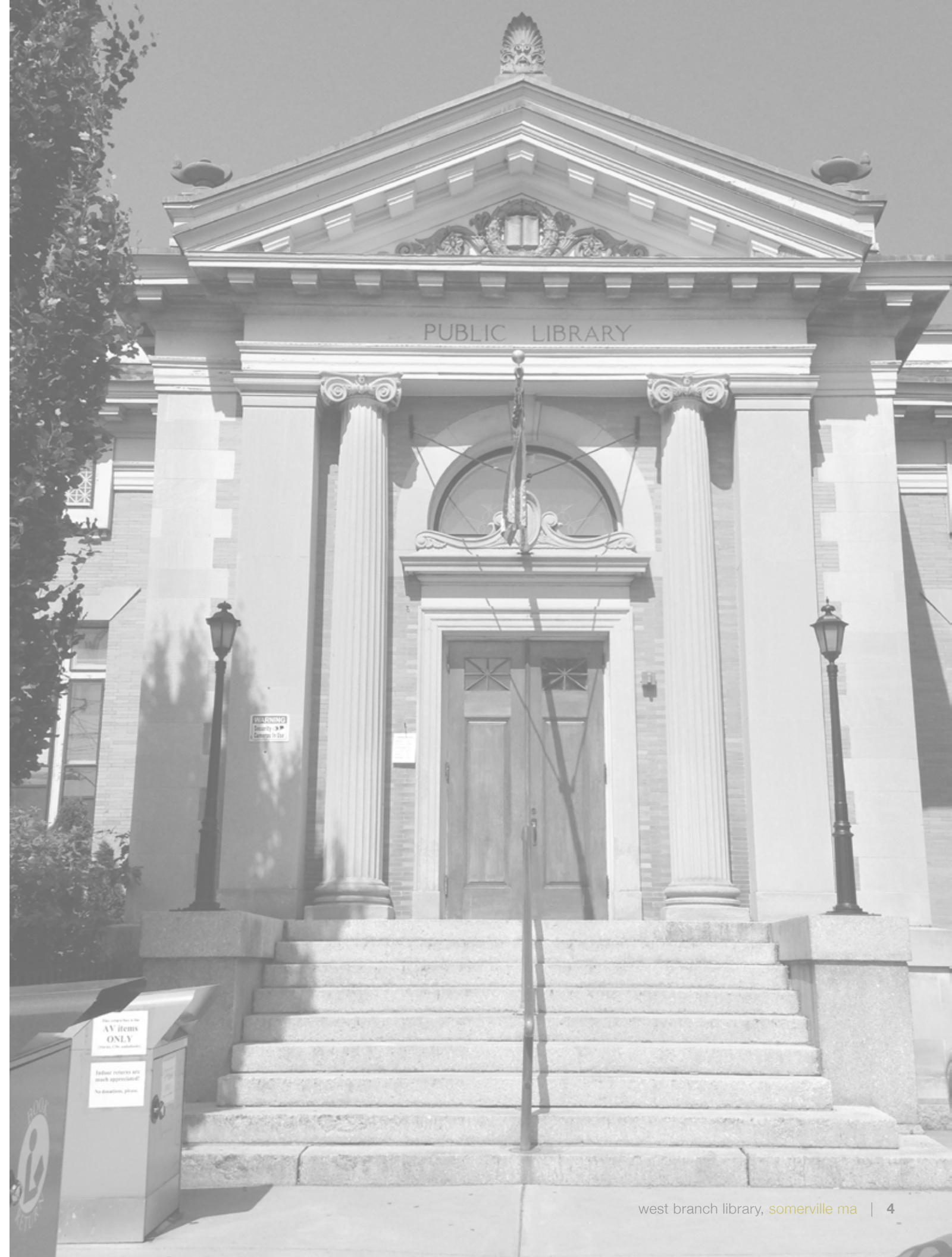
designLAB architects: Bob Miklos
Ben Youtz
Jason Van Yperen
Andrew Brookes

G2 Collaborative: Lisa Giersbach
Gigi Saltonstall

design technique inc.: John Sayre-Scibona, Owners Project Manager

MEETING GOALS

- REVIEW PROCESS TO DATE
- PRESENT REVISED DESIGN
- DISCUSSION AND FEEDBACK



AGENDA

6.00_{PM}

1 | OPENING

2 | MEETING GOALS

6.15_{PM}

3 | PROCESS TO DATE

6.25_{PM}

4 | REVIEW UPDATED DESIGN

6.45_{PM}

5 | DISCUSSION, Q&A

8.00_{PM}

6 | END OF MEETING

COMMUNITY ENGAGEMENT | PROCESS



COMMUNITY ENGAGEMENT | IDENTIFY GOALS

Community meeting space
doubling as possible performance
space

Children's space with more access to
technology and privacy & children's programs

Reading space that is quiet
and dedicated

Entry space - curb appeal
+ accessibility - perhaps
tastes out front.

Performance space
Large meeting space
Publishing center
Outdoors theatre space
Research & reading (individual) space

No need for staff parking - take the T.
- build down & put bike racks there.

Community outreach -
Somerville Arts Council - seems like such
a logical partnership + way to draw
in the loads of people who don't use the
library -> art exhibits, performances, lectures,
art maker/craft groups, films

Davis Square businesses ->
Space for pop up restaurants or other classes
that might even generate revenue

Local clubs, Garden club; kids activities, in ^{things to draw} young people 20-30 yr old

programs & resources

community space
multipurpose and flexible
performance opportunities
children's programs
outdoor programs

spaces & opportunities

accessible and appealing entry
engaging/ programmable landscape
historic integrity
flexibility & multi purpose

community & outreach

increase educational opportunities
community partners
expanded evening hour access
existing community events

COMMUNITY ENGAGEMENT | EMERGING THEMES & NEEDS

PROGRAMS & RESOURCES:

MULTIPURPOSE & FLEXIBLE SPACES

NEW COMMUNITY SPACE FOR MEETINGS, SMALL PERFORMANCES & EVENTS

MAINTAIN & EXPAND CHILDRENS PROGRAMS

INCREASE EDUCATIONAL OPPORTUNITIES, COMMUNITY PARTNERSHIPS, & ADULT OFFERINGS

UNIFY COLLECTIONS AND IMPROVE BROWSABILITY

OPERATIONS:

IMPROVE ENTRY SEQUENCE, SECURITY ISSUES & STAFF SPACES

INCREASE RESTROOMS & ADD DEDICATED FAMILY & STAFF RESTROOMS

MODERNIZE MECHANICAL SYSTEMS & ADDRESS ENVELOPE ISSUES

EXTERIOR & LANDSCAPE:

CREATE ACCESSIBLE & APPEALING ENTRY WHILE MAINTAINING HISTORIC INTEGRITY

SPACE FOR OUTDOOR PROGRAMS

NEW COMMUNITY SPACE FOR MEETINGS, SMALL PERFORMANCES & EVENTS

AGENDA

6.00_{PM}

1 | OPENING

2 | MEETING GOALS

6.15_{PM}

3 | PROCESS TO DATE

6.25_{PM}

4 | REVIEW UPDATED DESIGN

6.45_{PM}

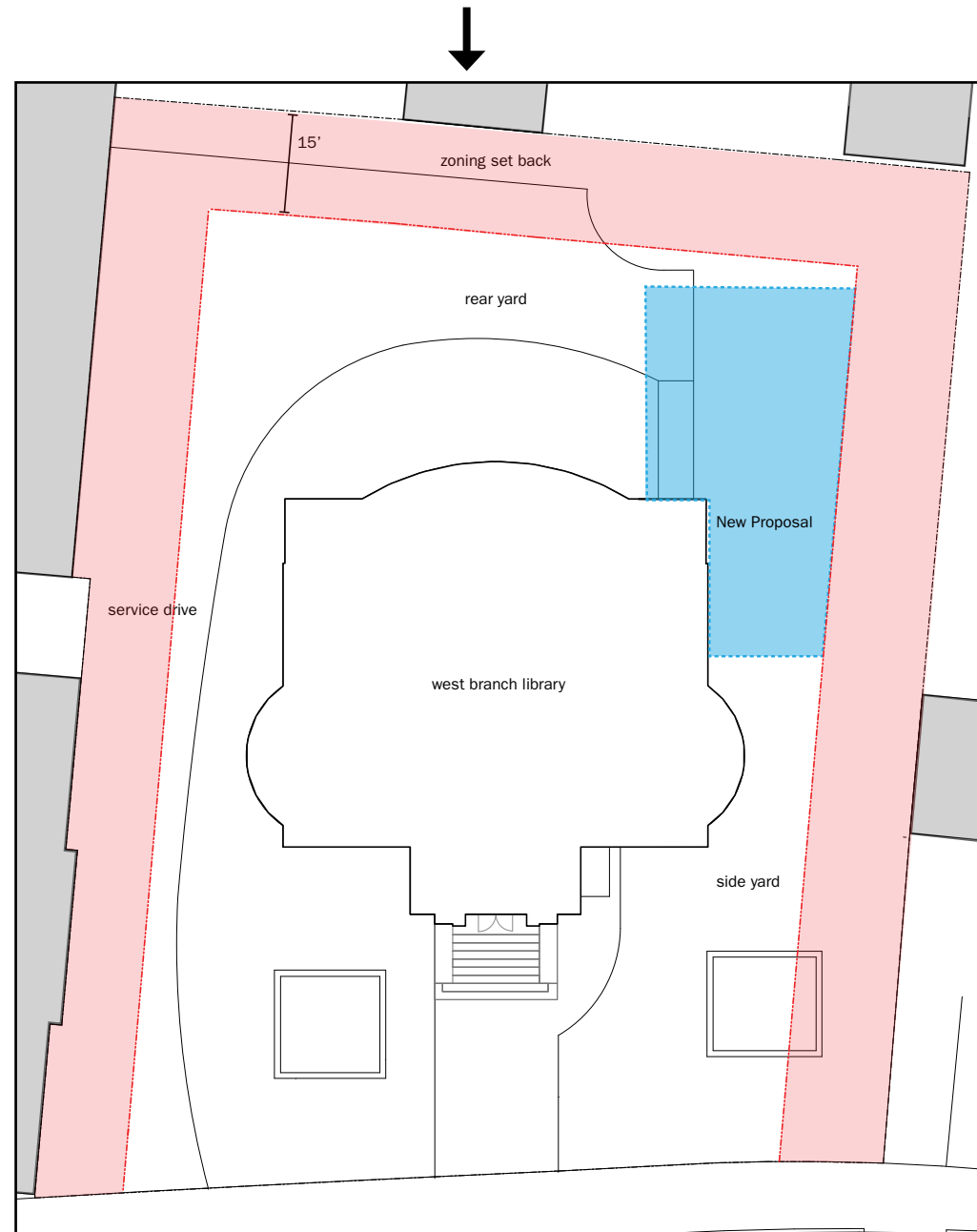
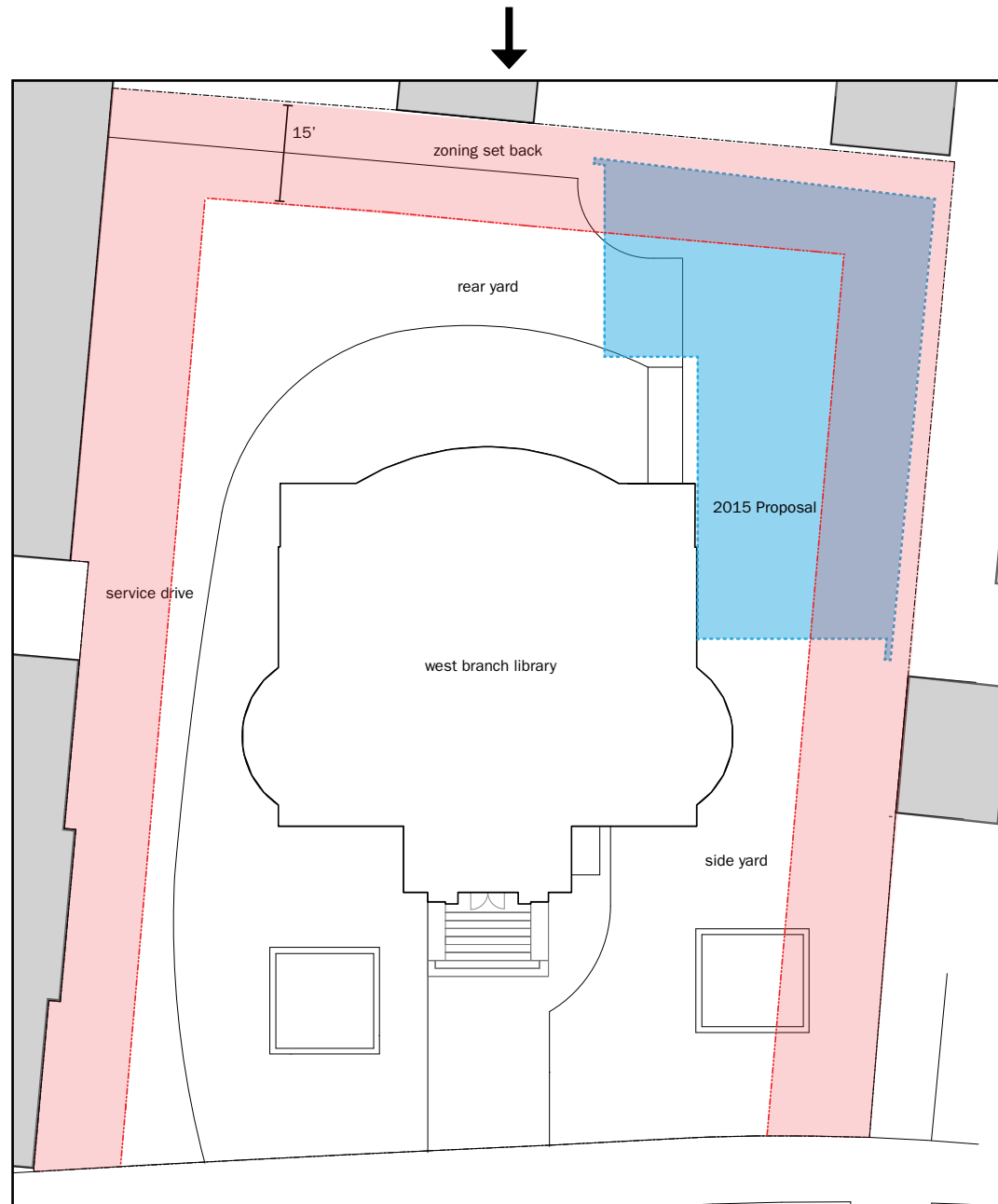
5 | DISCUSSION, Q&A

8.00_{PM}

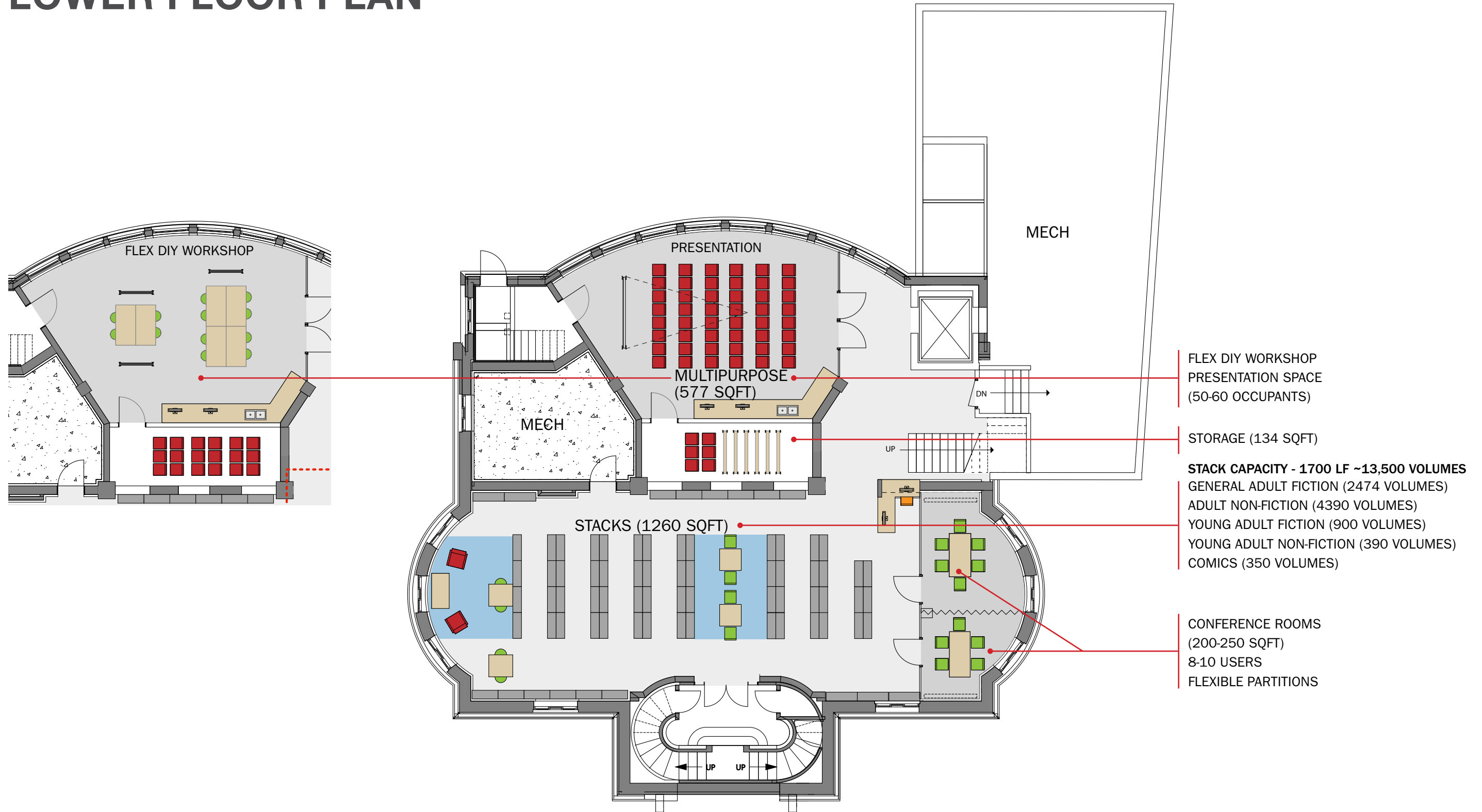
6 | END OF MEETING

PROGRAM | UPDATES

	PREVIOUS PROPOSAL	NEW PROPOSAL	EXISTING HISTORICAL BUILDING
TOTAL NET USABLE	10,300 SF	8,710 SF	7,580 SF
TOTAL NON-USABLE	4,300 SF	3,070 SF	3,070 SF
TOTAL GROSS	14,600 SF	11,780 SF	10,650 SF
SQUARE FOOT INCREASE	3,950 SF	1290 SF	N/A
PERCENT INCREASE	31%	9%	N/A



LOWER FLOOR PLAN



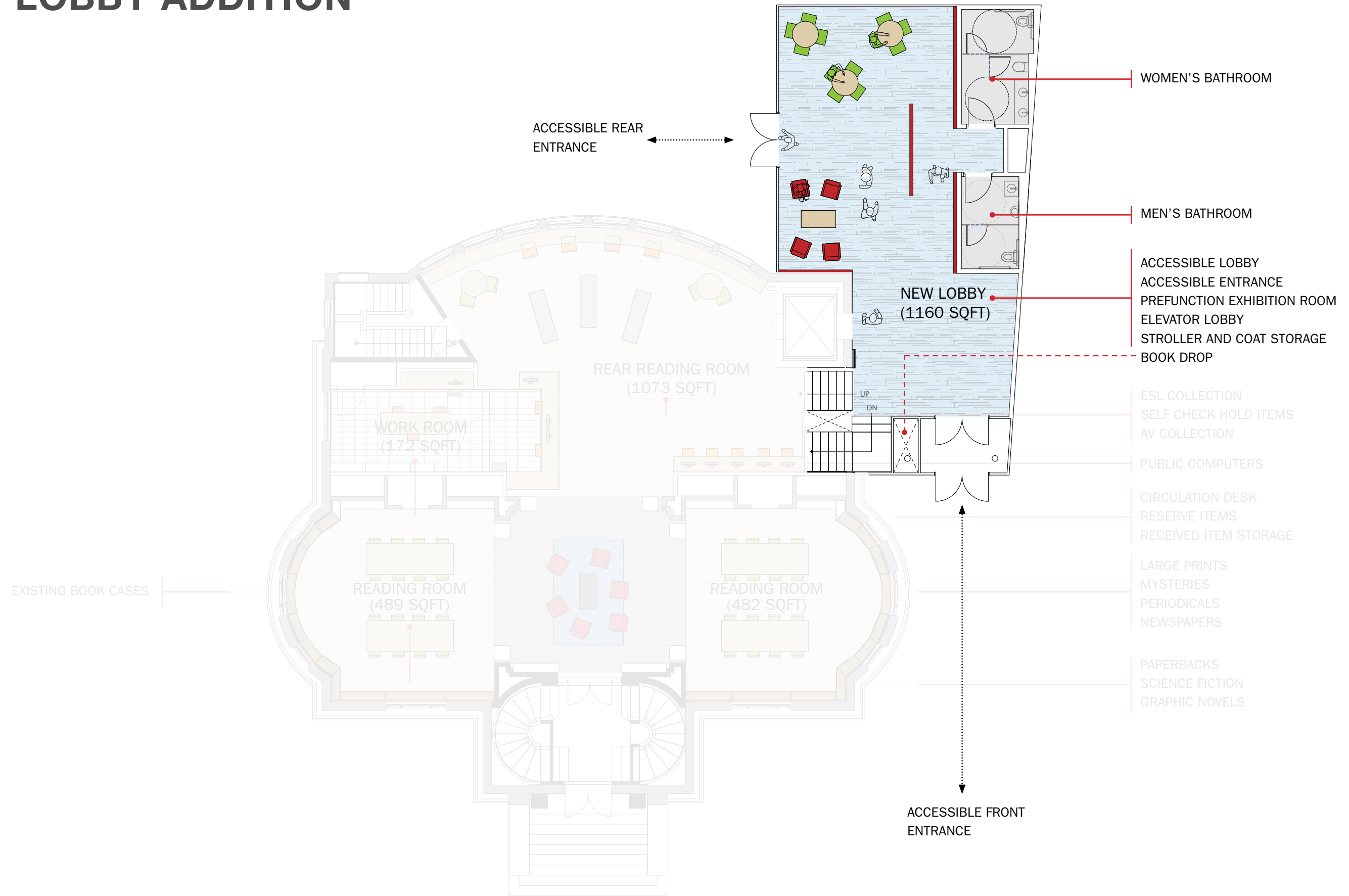
FLEX DIY WORKSHOP
PRESENTATION SPACE
(50-60 OCCUPANTS)

STORAGE (134 SQFT)

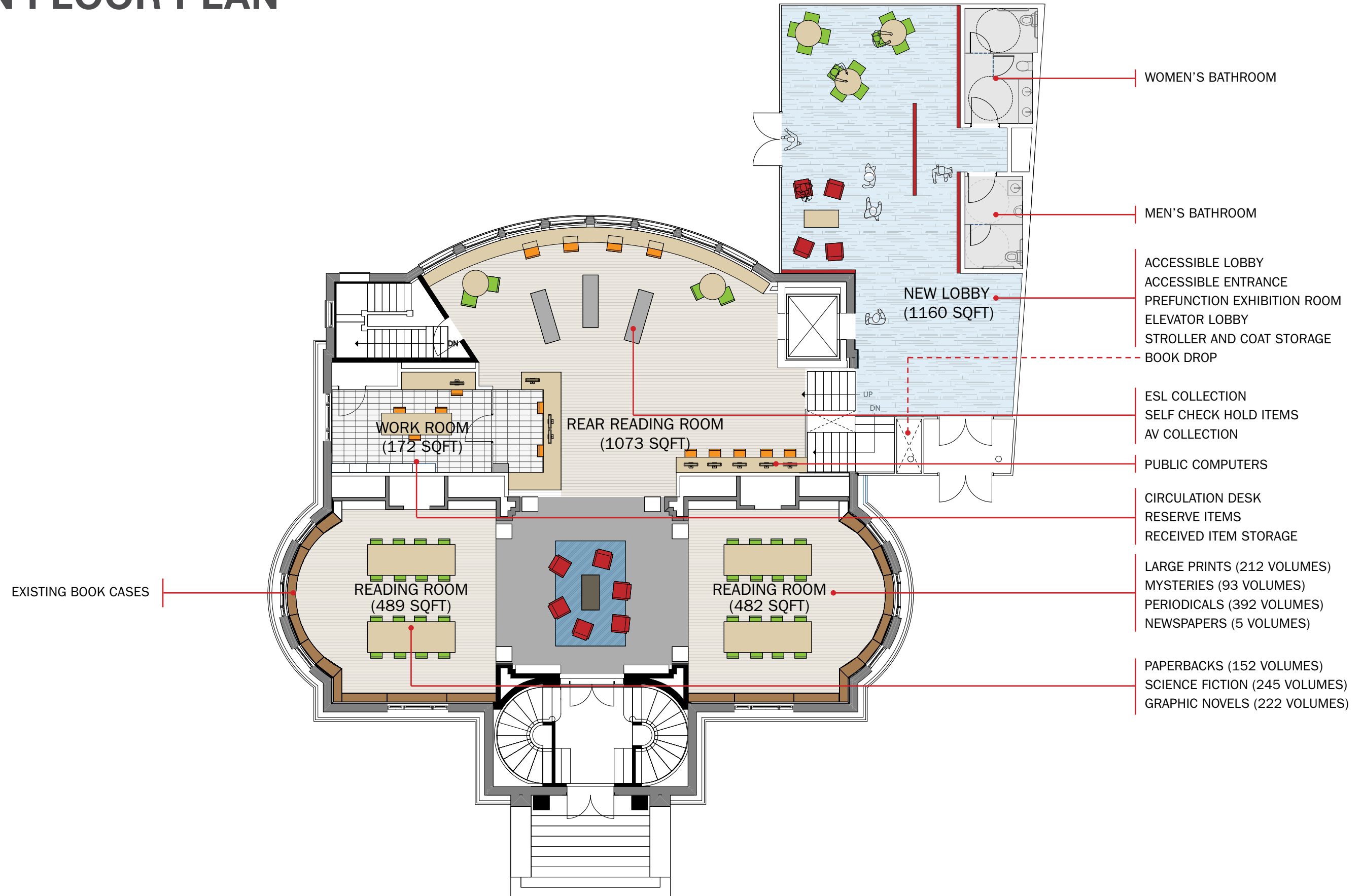
STACK CAPACITY - 1700 LF ~13,500 VOLUMES
GENERAL ADULT FICTION (2474 VOLUMES)
ADULT NON-FICTION (4390 VOLUMES)
YOUNG ADULT FICTION (900 VOLUMES)
YOUNG ADULT NON-FICTION (390 VOLUMES)
COMICS (350 VOLUMES)

CONFERENCE ROOMS
(200-250 SQFT)
8-10 USERS
FLEXIBLE PARTITIONS

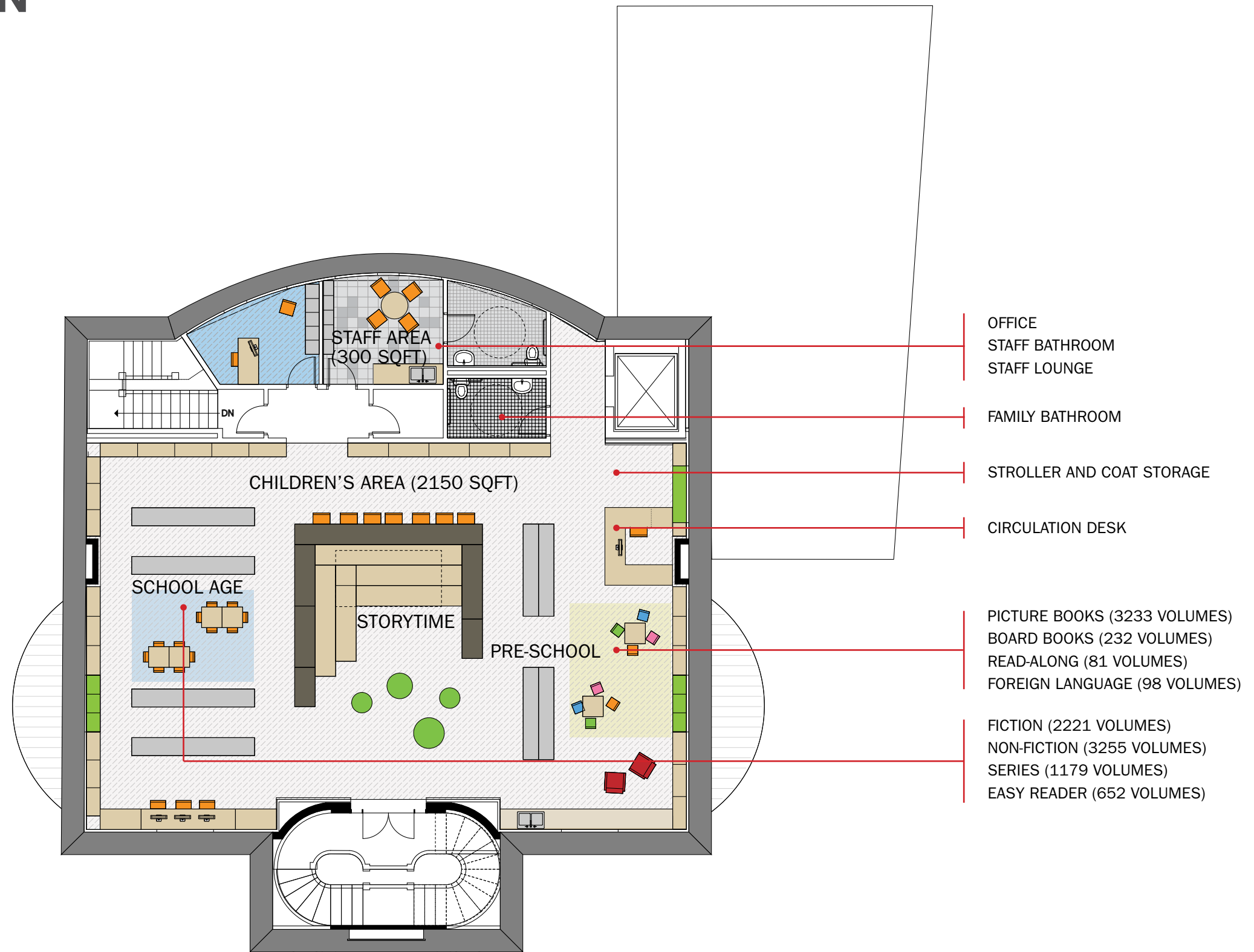
NEW LOBBY ADDITION



MAIN FLOOR PLAN



UPPER FLOOR PLAN

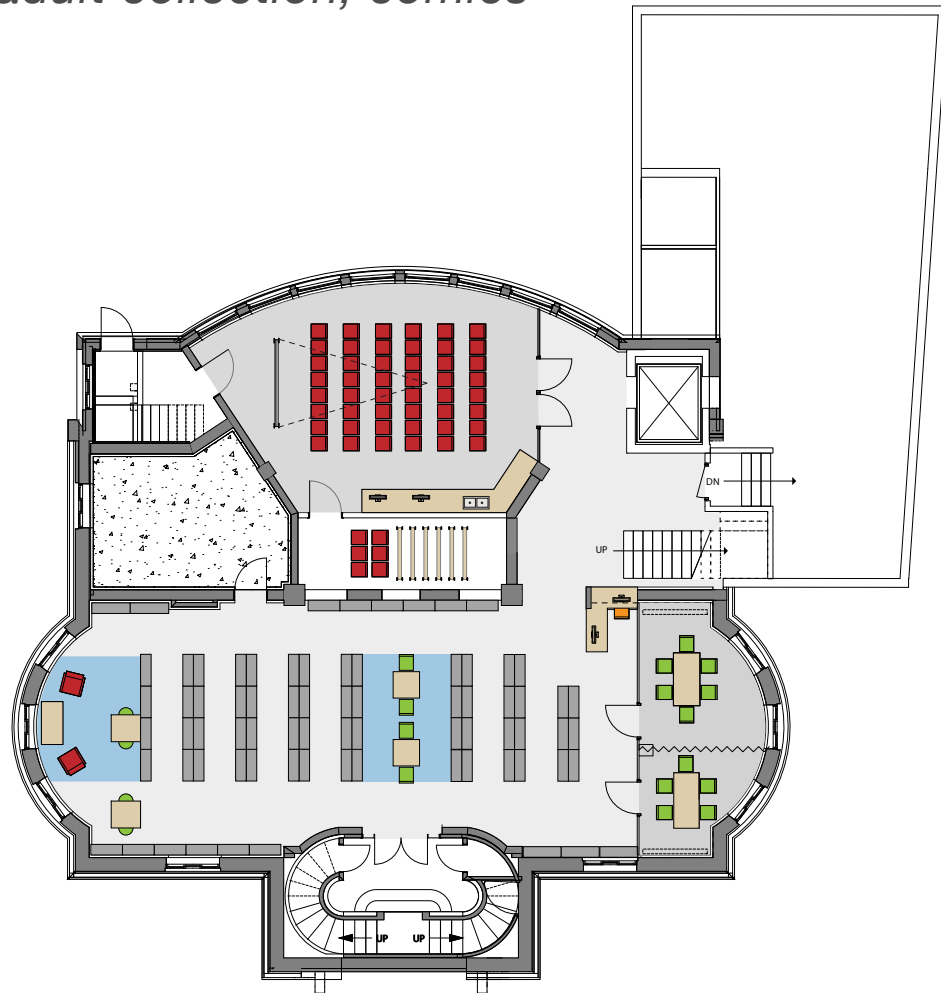


LIBRARY BENEFITS

LOWER LEVEL

MULTIPURPOSE: crafts, workstations, printers, group projects, classes and workshops, electronics workstations, school group hosting, demonstrations, hands on learning, lectures, small performances, esl classes

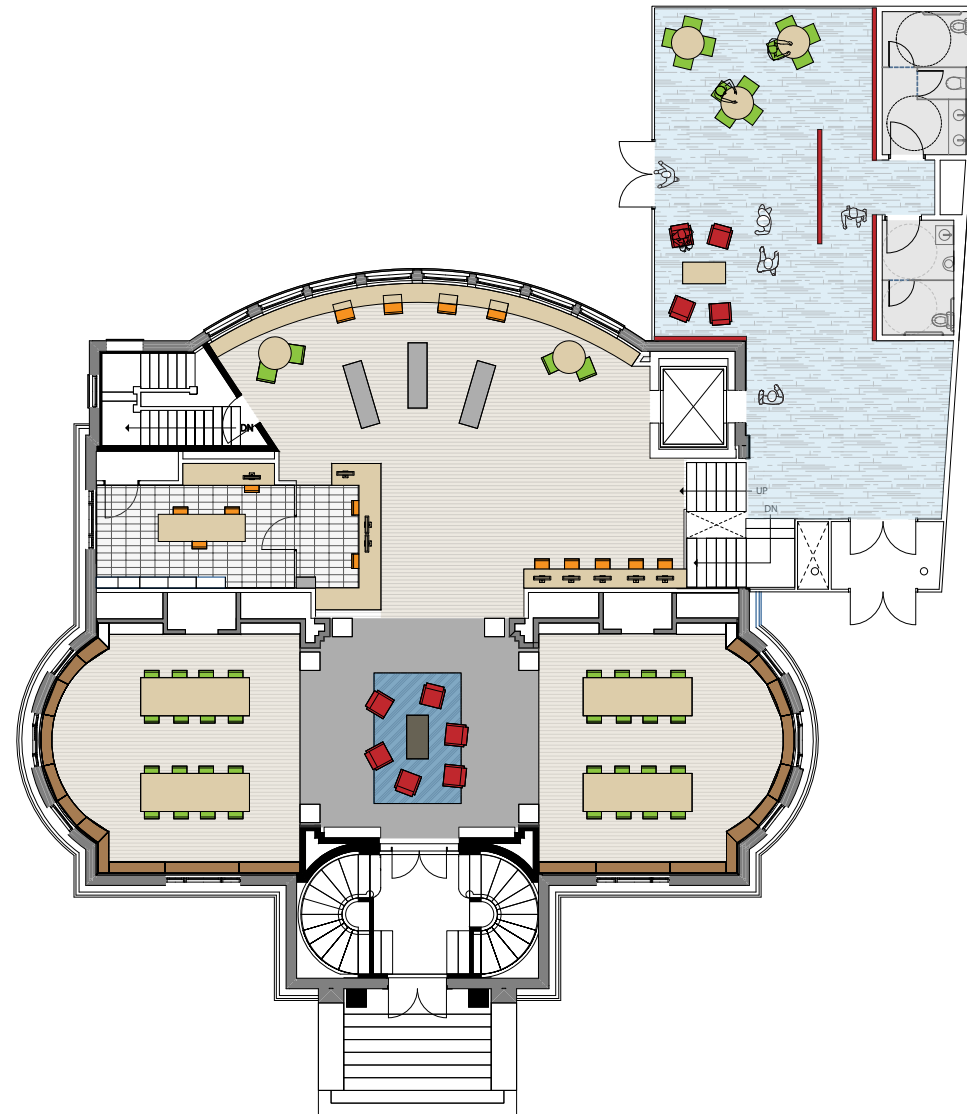
COLLECTION: maintaining collection size + growth, improving browsability through unifying collections and access, improving checkout and reserve items for patrons, *adult fiction, non-fiction, young adult collection, comics*



MAIN LEVEL

ADDITION: accessible bathrooms, accessible entrances, exhibition space, waiting area, ante room, flex space, elevator lobby

HISTORIC BUILDING: public computers, book reserve, circulation desk, work bar, staff work room, reading rooms, *esl collection, av collection, large print, mysteries, periodicals, newspapers, paper backs, science fiction, graphic novels*



UPPER LEVEL

CHILDREN'S: dedicated restrooms, craft space, children's computer access, dedicated reading and story hour space, areas and offerings for kids of various ages, stroller parking, increased security for children and caregivers, room activities and events/lessons. *Fiction, series, easy reader, board books, foreign language, picture books, read-alongs, non-fiction.*



AGENDA

6.00_{PM}

1 | OPENING

2 | MEETING GOALS

6.15_{PM}

3 | PROCESS TO DATE

6.25_{PM}

4 | REVIEW UPDATED DESIGN

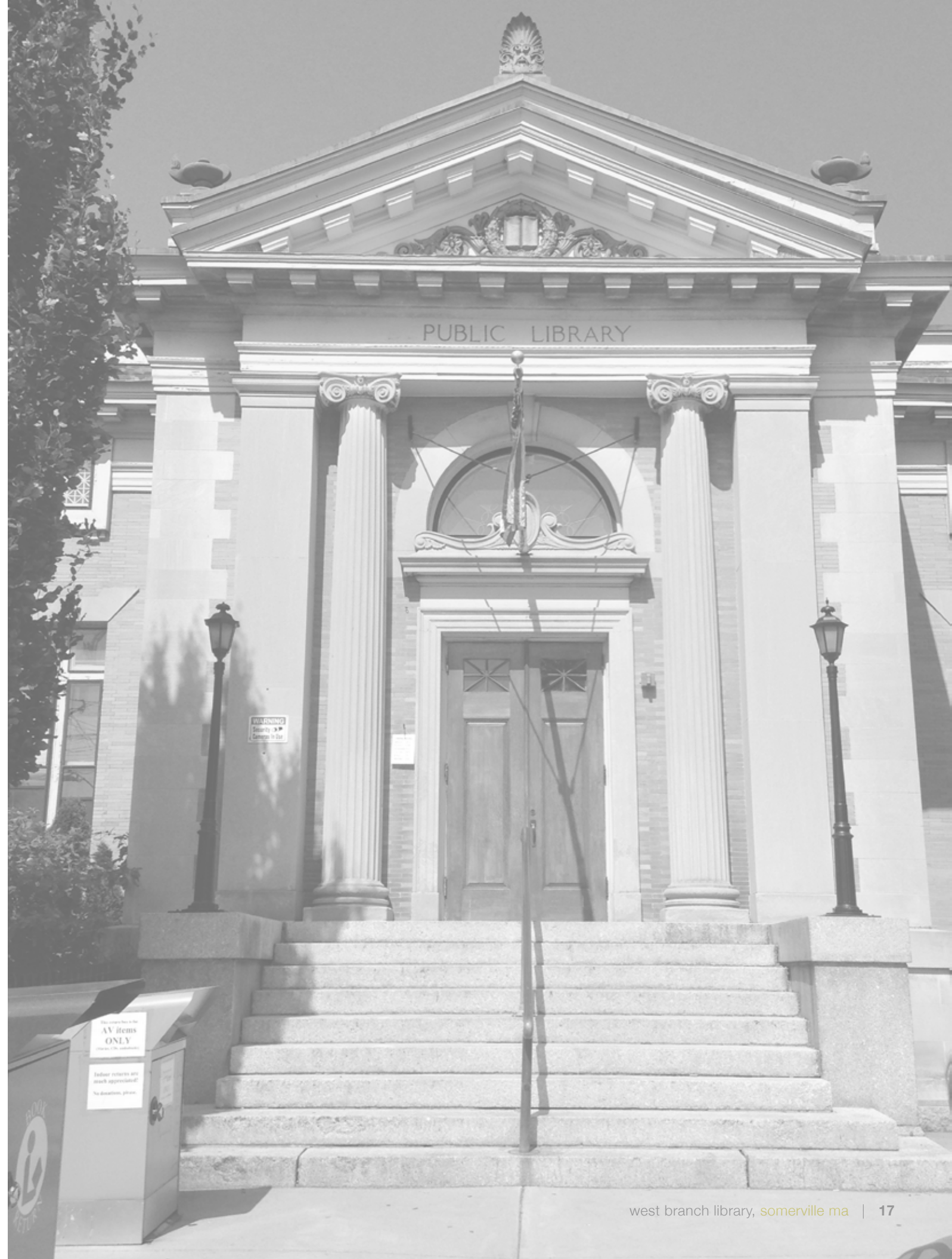
6.45_{PM}

5 | DISCUSSION, Q&A

8.00_{PM}

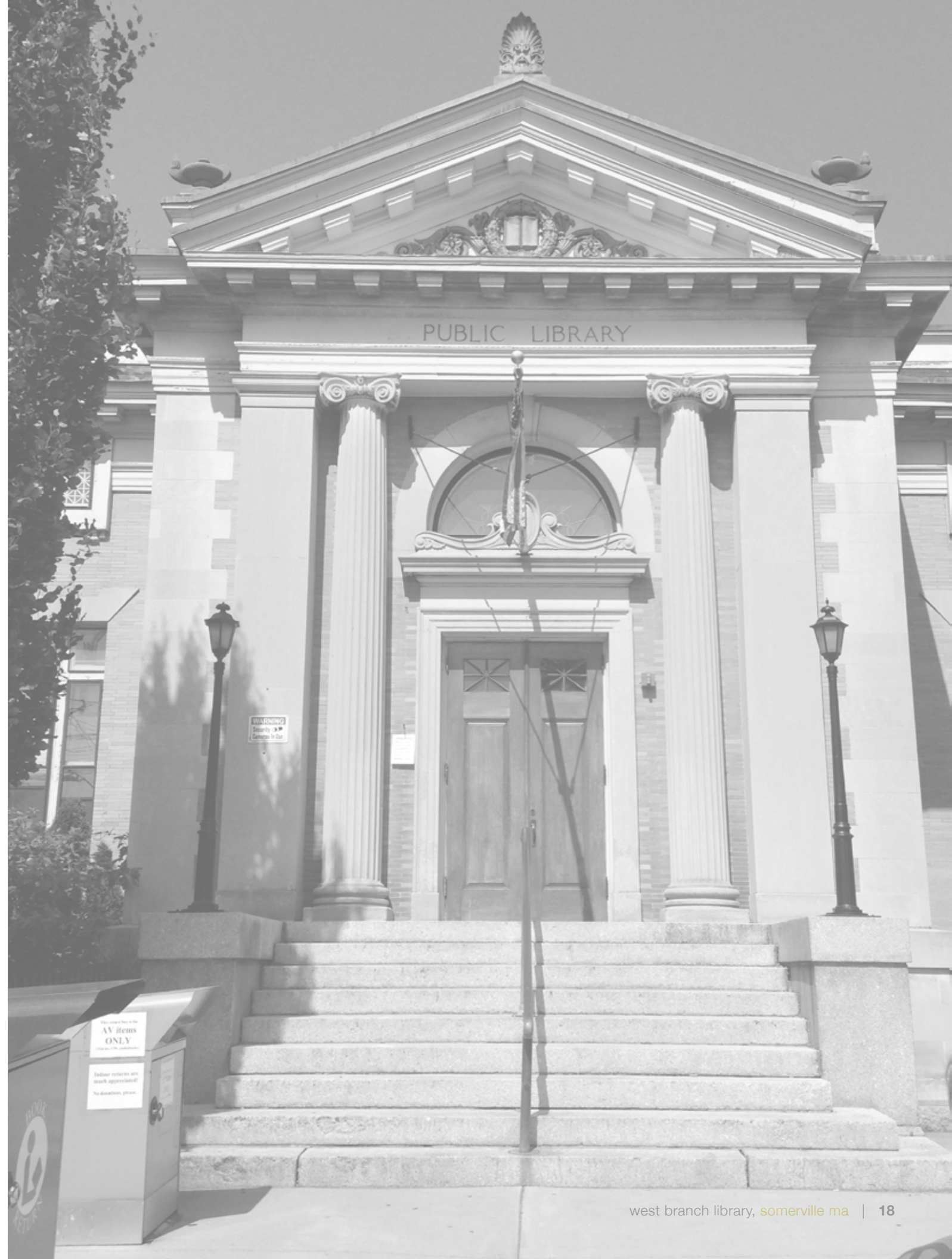
6 | END OF MEETING

DISCUSSION, Q&A



NEXT STEPS

- Historic Preservation Commission Process
- Board of Aldermen
- Landscape Design Community Meeting
- Design Process to Construction



THANK YOU



INSPIRATION | MATERIAL PALETTE



INSPIRATION | ENTRY



INSPIRATION | BROWSING



INSPIRATION | READING ROOMS



INSPIRATION | MAKER SPACES



INSPIRATION | COMMUNITY ROOM



INSPIRATION | STACKS



INSPIRATION | CHILDREN'S ROOM



INSPIRATION | CHILDREN'S ROOM

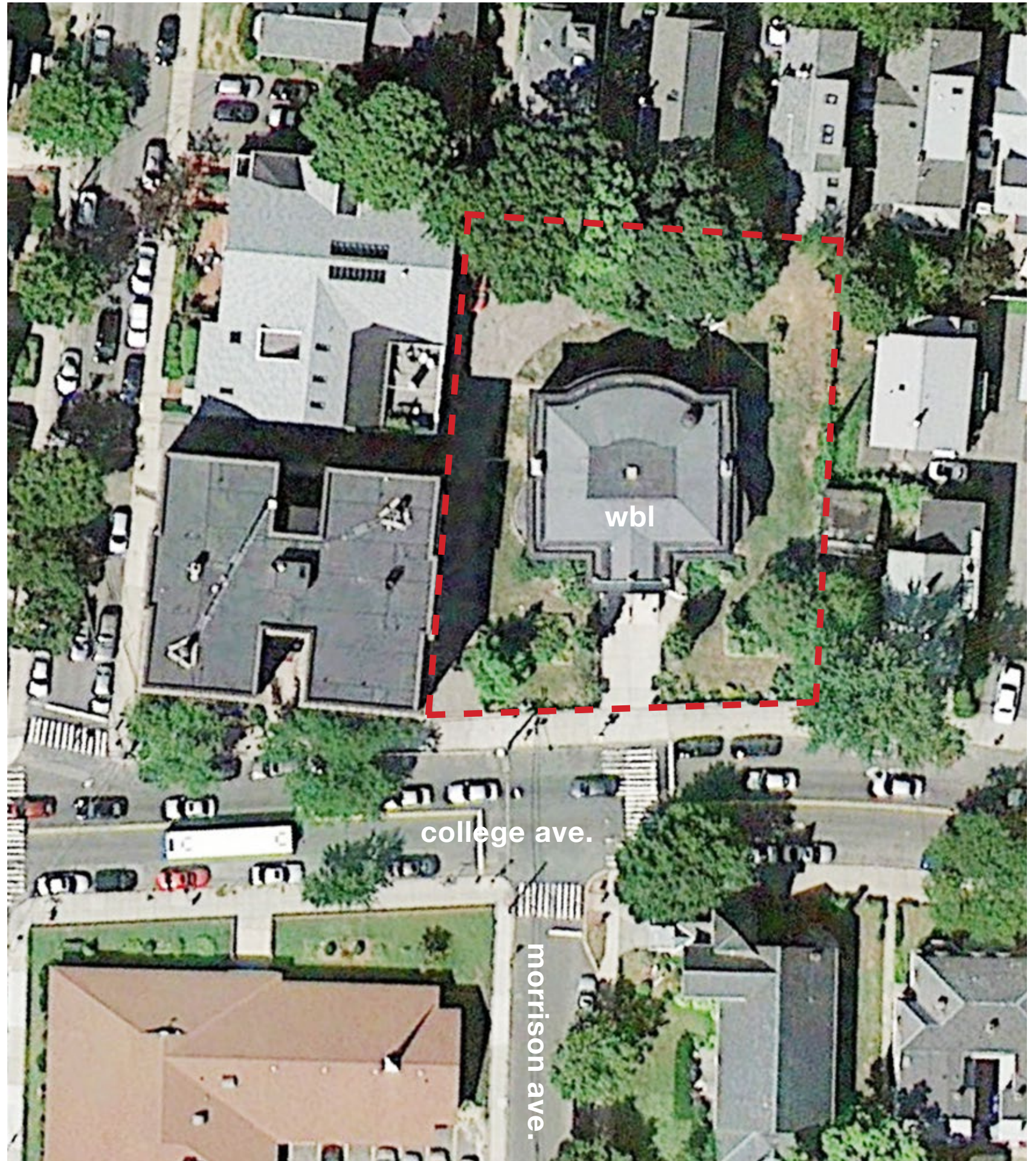
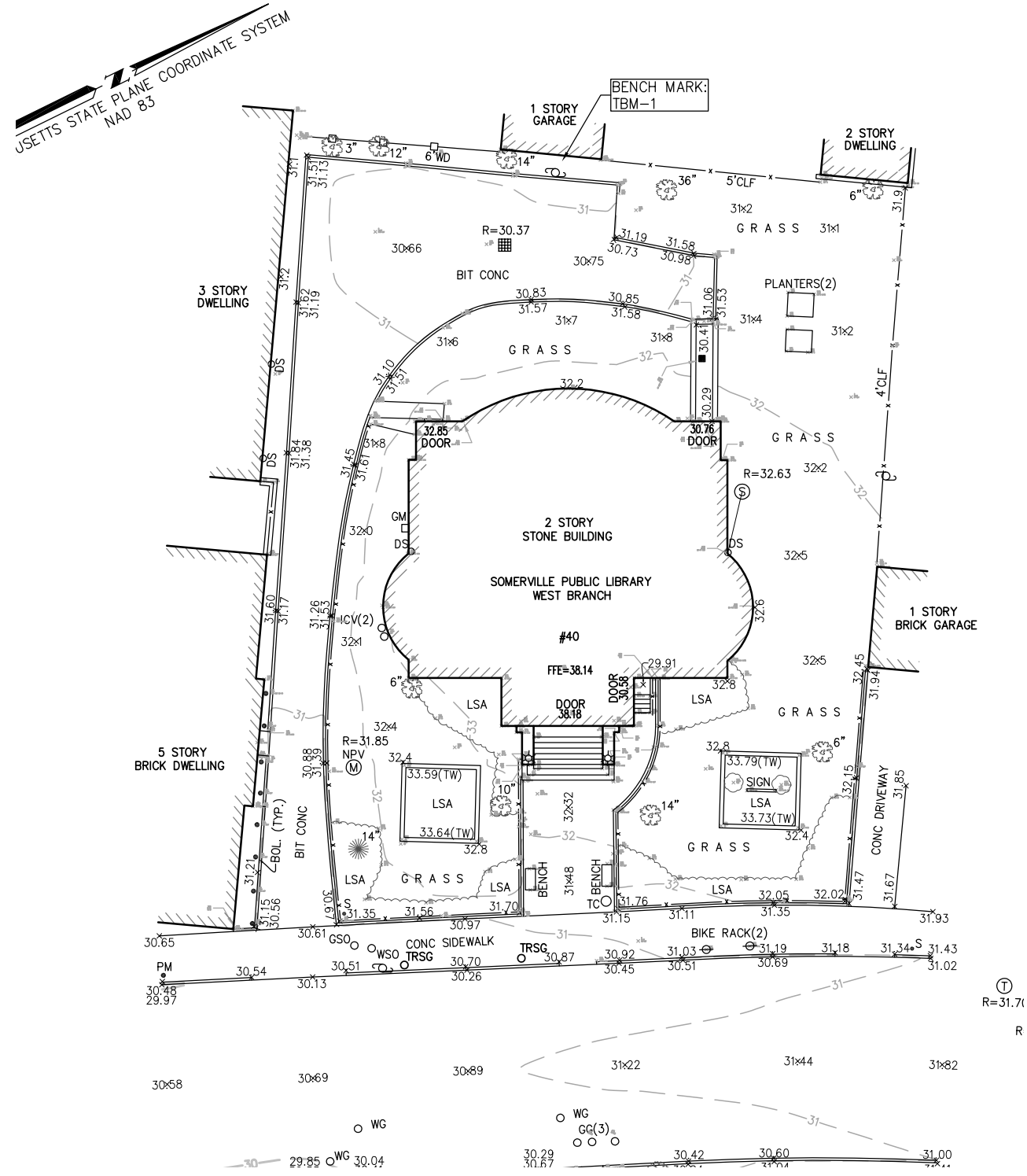


COMMUNITY PROCESS | COMMUNITY LANDSCAPE WORKSHOP | FEBRUARY 29, 2016

Meeting Goals were to review and discuss various design options for the landscape and site for the future West Branch Library.



EXISTING CONDITIONS | SITE



EXISTING CONDITIONS | SITE AXON



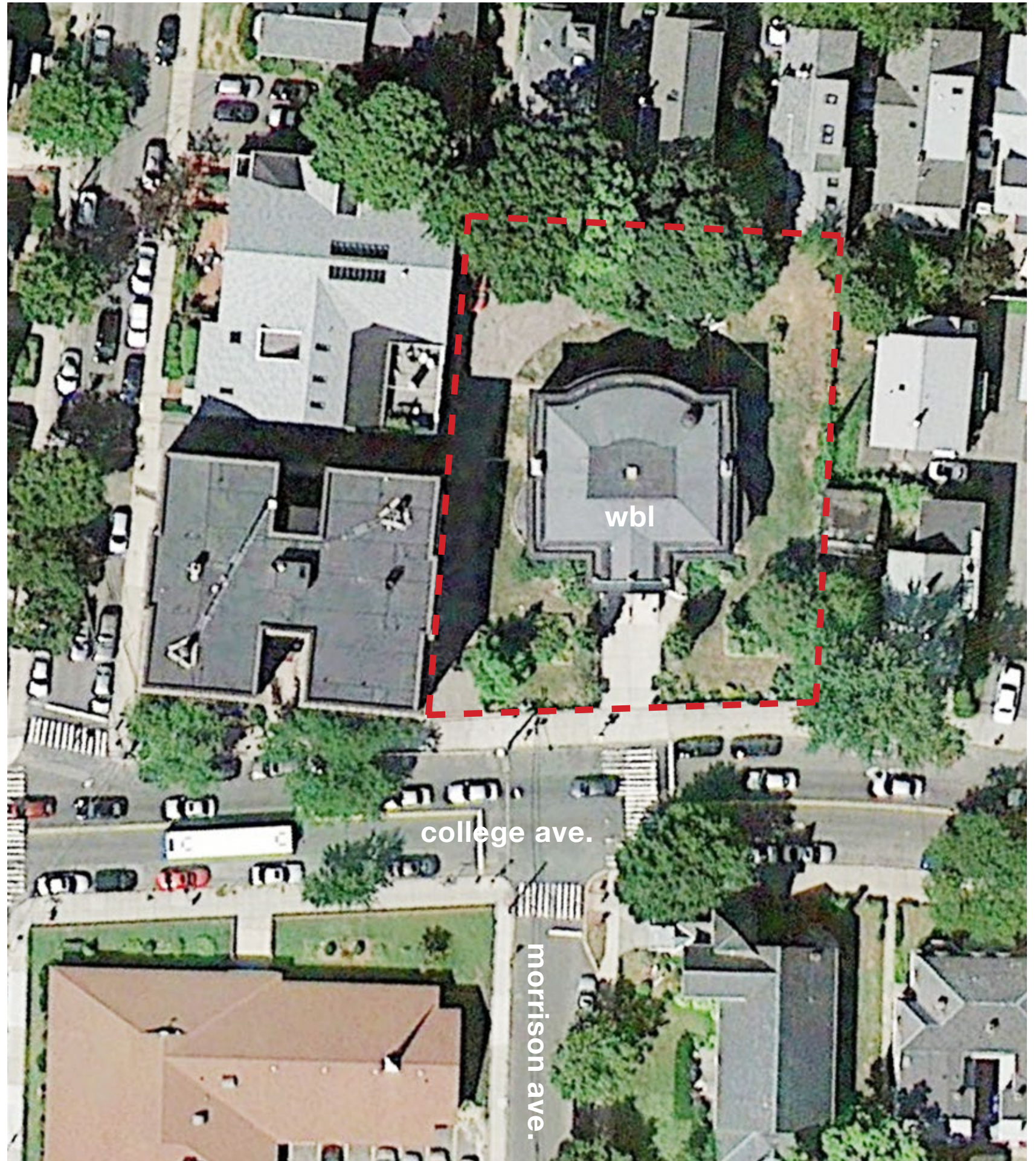
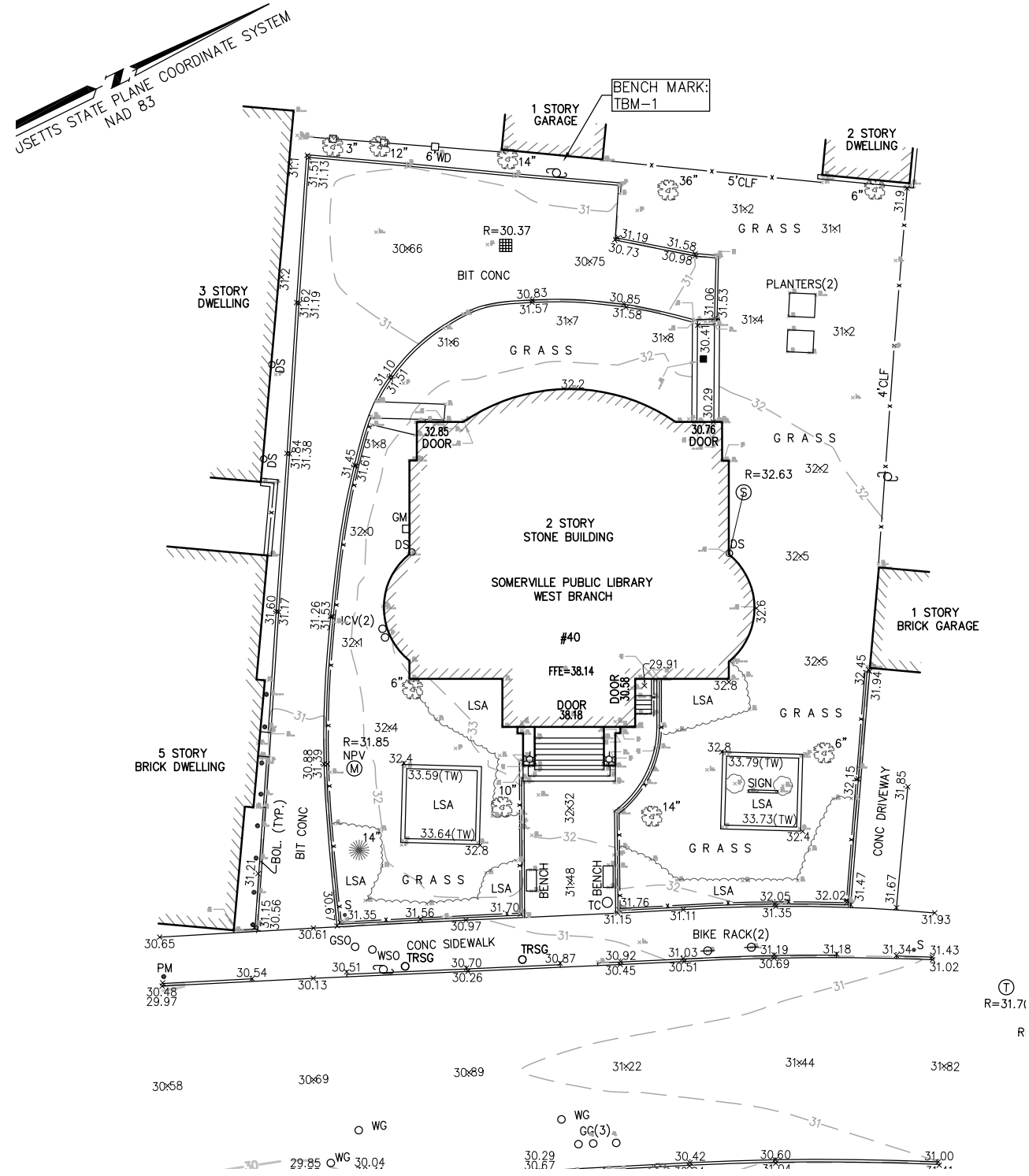
HISTORIC PHOTOS | INTERIOR



HISTORIC PHOTOS | INTERIOR



EXISTING CONDITIONS | SITE PLAN



EXISTING CONDITIONS | ENTRY & APPROACH



EXISTING CONDITIONS | ENTRY & APPROACH



EXISTING CONDITIONS | REAR YARD & PARKING



EXISTING CONDITIONS | REAR YARD & PARKING



EXISTING CONDITIONS | REAR YARD & PARKING

