

Popular Architectural Styles

- Georgian/Adams/Federal
- Farmhouse/Vernacular
- Greek Revival
- Italianate
- Gothic
- Mansard/Second Empire
- Queen Anne/Stick/Shingle
- Colonial Revival
 - Garrison, Dutch, English, Spanish
- 3-Decker
- Craftsman
- Modern/International
- Ranch
- Neo-Victorian



New England Architecture



Colonial and Federal Period



Georgian/Adams/Federal

- Rigid symmetry
- Hipped roofs
- Axial entrances
- Sash windows
- Geometrical proportions
- Giant pilasters
- Central pavilion with pediment and pilasters jutting out from front façade
- Decorative elements, such as urns, swags, sheaths of wheat and garlands.



Other early styles



3 circa 1800 Houses



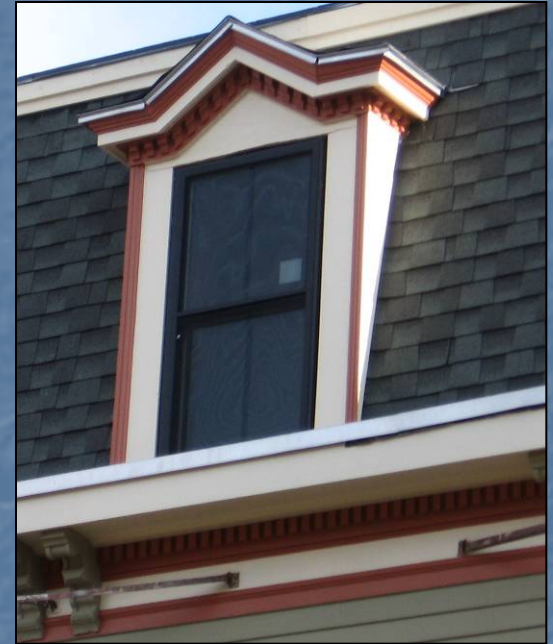
Vernacular Farmhouse



Queen Victoria reigned from 1837-1901

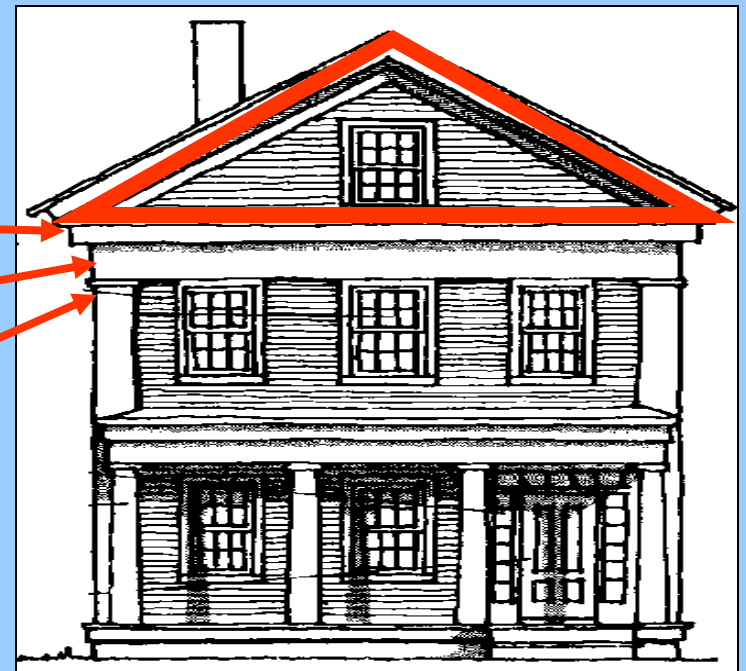
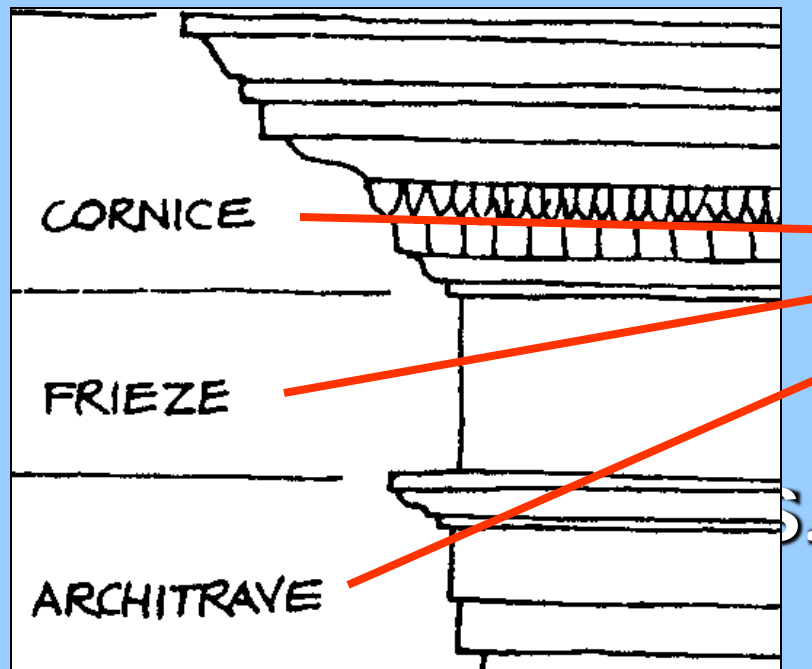


Some Architectural Details



Greek Revival

- Popular 1820-1860
- Gable end oriented to street
- Pediment symbolic of a Greek Temple
- Classical architecture entablature



Greek Revival

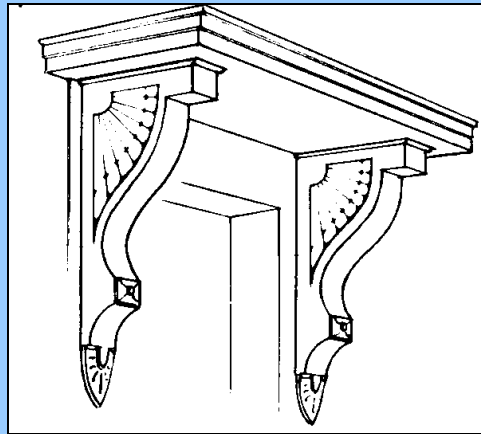
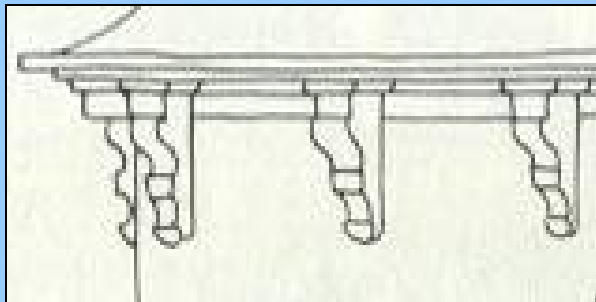


Greek Revival



Italianate

- Popular 1840-1890
- Gable end oriented to street
- Ornamental window & door hoods
- Bracketed cornice



Italianate

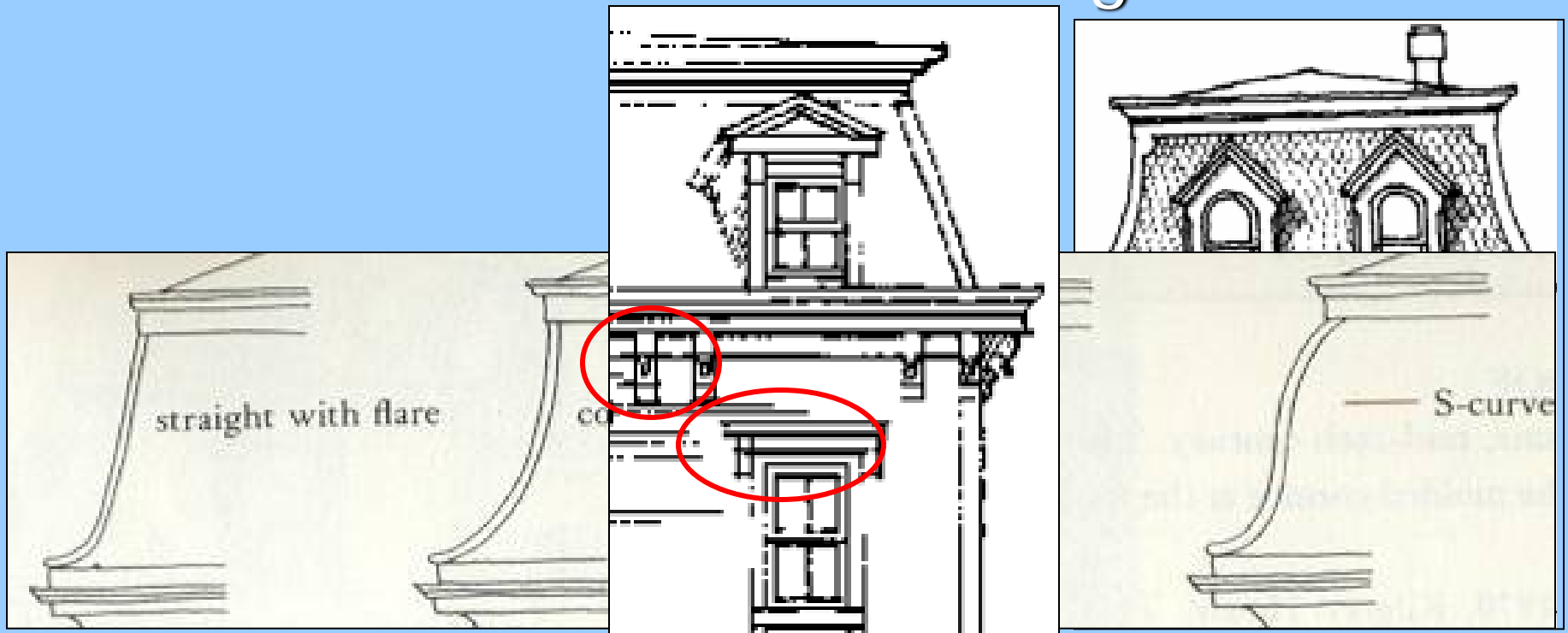




Italianate

Mansard/Second Empire

- Popular 1850-1890
- Mansard Roof/Dormers
- Paired Cornice Brackets
- Raised Door & Window Moldings





Second Empire/Mansard

Queen Anne/Victorian

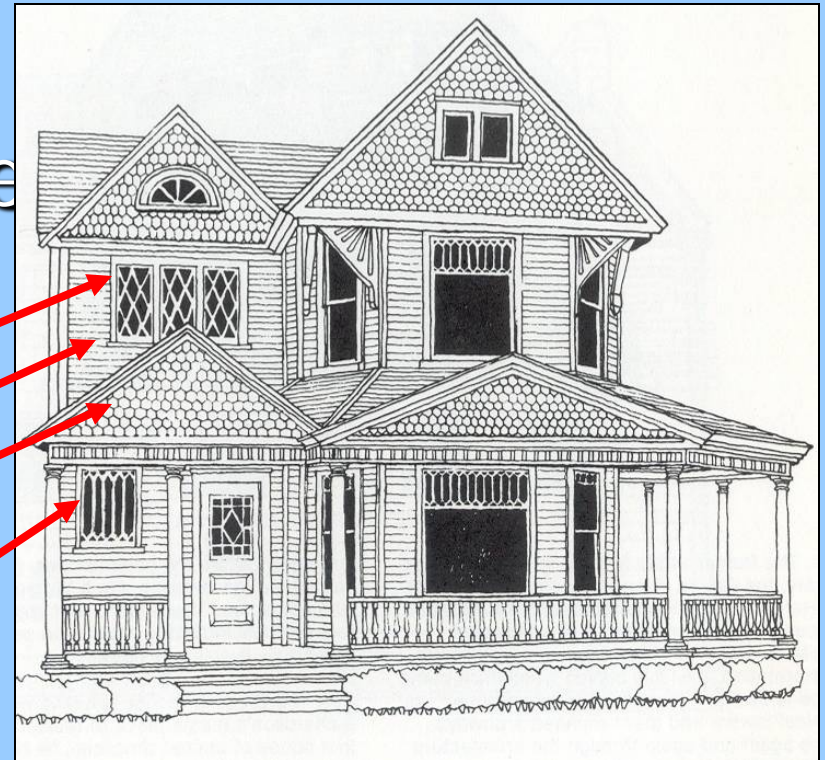
- Popular 1870-1920
- Complex & articulated exterior
- Multiple cladding materials & fenestration
- Asymmetrical form
- Prominent porches often

ornamental window

clapboards

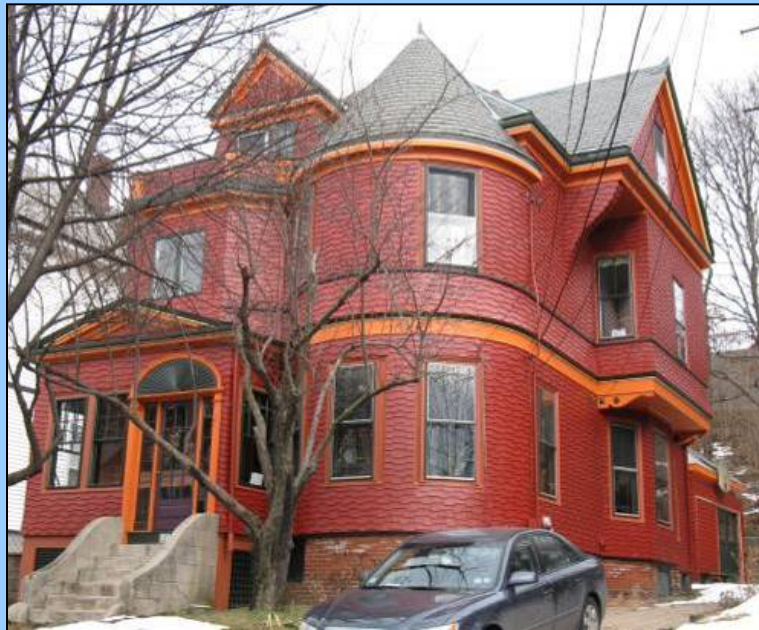
fish-scale shingles

lead glass window



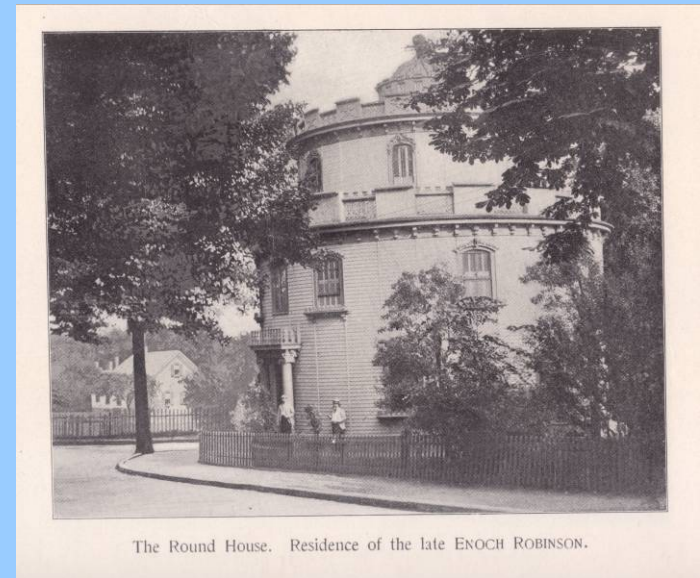
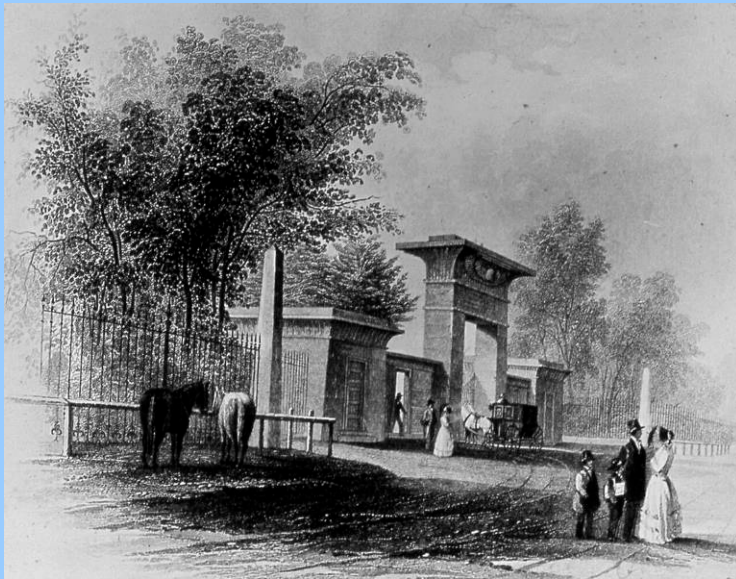
Queen Anne





Shingle

Other Victorian Era Styles



Late 19th and Early 20th Century American Styles



Three-Deckers & Row Houses



Cape

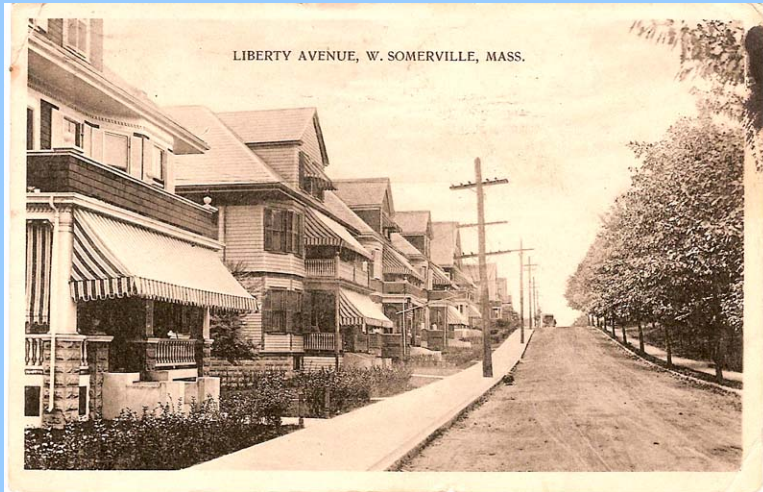


- One and one half stories
- Symmetrically designed
- Central front door
- Multi-paned windows on each side

Craftsman/ Philadelphia/ Four Square

- Low-pitched roof
- Deep eaves with exposed rafters
- Decorative knee braces.
- 1–1½ stories
- Built-in cabinetry
- Large fireplace, often with built-in cabinetry on either side
- Dormers
- Large, covered front porches with massive, battered columns
- Windows were typically double-hung with multiple lights in the upper window and a single pane in the lower

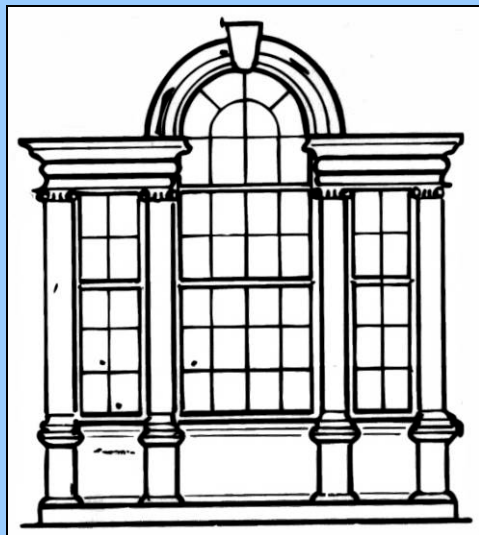
Craftsman/ Philadelphia/ Four Square



Residence of DR. G. W. W. WHITING, 280 Broadway.

Colonial Revival

- Popular 1900-1940
- Return to classical style & symmetry
- Elaborate front entries
- Columned porches and doors
- Palladian windows



Revivals: Colonial, Mission, French, Tudor



Ranch/Split Level

- Single story
- Long, low roofline
- Asymmetrical rectangular, L-shaped, or U-shaped design
- Simple floor plans
- Open floor plans
- Attached garage
- Sliding glass doors opening onto a patio
- Large windows
- Vaulted ceilings with exposed beams
- Windows often decorated with shutters
- Exteriors of stucco, brick and wood
- Large overhanging eaves
- Cross-gabled, side-gabled or hip roof
- Simple and/or rustic interior and exterior trim

Ranch/Split Level



Annual Preservation Awards Program

- Initiated in 1996; 2012 = 17th Anniversary
- Preservation & Director Awards
- SHS students create representative piece for each winning property (CAD drawings and artwork)
- Winners receive student artwork of property
- SHPC reviews each property for:
 - Consistency with original style/character
 - Compatibility with property and neighborhood
 - Extent of work accomplished
 - Contribution and inspiration to surrounding area
- Ceremony held at Somerville Museum to recognize winners and students



Vernacular Barn



Somerville Preservation Awards Program



Somerville Preservation Awards Program



SOMERVILLE ARMORY, SOMERVILLE, MASS.



Somerville Preservation Awards Program



Somerville Preservation Awards Program