



# Ward 4

---

MAYOR KATJANA BALLANTYNE

CITY COUNCILOR JESSE CLINGAN

# Agenda

<b>Progress for All</b>	Mayor Katjana Ballantyne
<b>Office of Sustainability and Environment</b>	Emily Sullivan, Climate Change Program Manager
Economic Development	William Blackmer, Workforce Development Coordinator
Public Space & Urban Forestry	Luisa Oliveira, Director
<b>Office of Housing Stability</b>	Ellen Shachter, Director
Engineering & Mobility Divisions Update	Alexandra Kleyman, Senior Transportation Planner & Brian Postlewaite, Director of Engineering
<b>Department of Racial and Social Justice</b>	Denise Molina Capers, Director, & Adrienne Pomeroy, ADA Coordinator
<b>Somerville Police Department</b>	Chief Charles Femino
<b>Rodent Control &amp; FOG (Fats, Oils &amp; Greases) Updates</b>	Nick Antanavica, Superintendent of Inspectional Services

# Progress for All

---

MAYOR KATJANA BALLANTYNE

A solid blue horizontal bar at the bottom of the page.

# Somerville at a Glance

---

- 4 square miles in size
- 60% population turnover every 3 years
- 81,100 residents as of 2020
- 50+ languages spoken
- Somerville Public Schools students are a majority minority with over 60% identifying as low income
- From 2011 to 2021 we have added 8,856 jobs
- City Budgets 'Then and Now':
  - FY23 Budget: \$309,260,849
- 17 City parks renovated in the last 10 years



# Access and Community

---

**Access is rooted in affordability.**

**As our community changes, residents must be able to access the change around them.**

- Developers, employers, job seekers, workforce development pipelines

**Community is residents meeting, talking and coming together on issues that matter to them most.**

- SomerVision 2040

# Implementing Progress for All

---

- **It is created through inclusive, intentional efforts always viewed through an equity lens.**
- **How have we been engaging Somerville communities?**
  - COVID Listening Sessions, Participatory Budgeting, event attendance, Voice of Somerville survey
- **What are the issues I'm hearing?**
  - Affordability, COVID impacts, social justice, environment, transportation, infrastructure, quality of life
- **Where is Progress for All headed?**

# Office of Sustainability and Environment

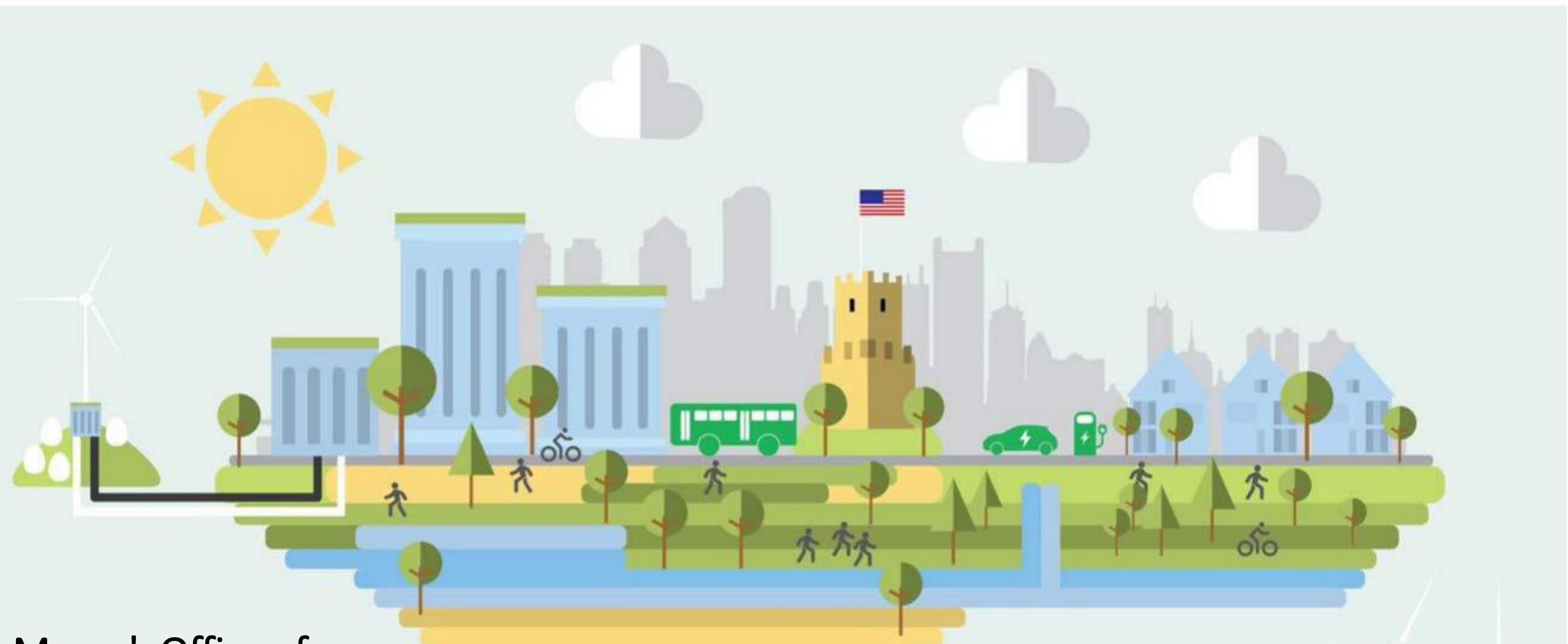
---

EMILY SULLIVAN, CLIMATE CHANGE PROGRAM MANAGER

[esullivan@somervillema.gov](mailto:esullivan@somervillema.gov)

781-823-9248

[www.SomervilleMA.gov/OSE](http://www.SomervilleMA.gov/OSE)



## Mayor's Office of Sustainability and Environment Mission

by Mike Powers

Develop and implement policies and programs that minimize environmental impacts and greenhouse gas emissions, build resiliency, and increase equity, enabling a healthy and enjoyable environment for all the people of Somerville and a responsible City government.





# Community Choice Electricity (CCE)

---

Electricity supply program organized by the City of Somerville to provide residents and businesses with new, City-vetted options for electricity supply.

- Receive stable, competitive pricing\*
- Promote regional, zero carbon, renewable energy generation and job creation
- Renters paying electric bills can participate without landlord permission



*\*Future savings cannot be guaranteed due to Basic Service rate changes every 6 months for residential and commercial customers and every 3 months for industrial customers.*

# Community Choice Electricity (CCE)

---

- What to know about the program between November 2022-December 2024
  - Doubled the renewable energy
  - Supplier will remain Direct Energy
  - Continue to receive one bill from Eversource
  - Will never knock on your door or call unsolicited
- Choose from three products
  1. Do nothing and receive 20% additional regional, zero-carbon energy
  2. Choose the Basic product for the lowest rate. Utility discount recipients still save 36%
  3. Opt-up for 100% regional, zero-carbon energy





# Become a Climate Ambassador!

For more information sign up tonight or online:

[bit.ly/SCF-Ambassadors](https://bit.ly/SCF-Ambassadors)



# Somerville Climate Forward Update

- Somerville's Climate Action Plan
- Prioritizes equity, mitigation, adaptation, and resiliency.
- Identifies priority actions for the City to address.
- We are updating the Plan through September 2023.
  - **Make your voice heard!**
  - **Help spread the word!**
  - **Sign up tonight to learn more about ways to get involved.**

More information: [www.somervillema.gov/climateforward](http://www.somervillema.gov/climateforward)



# Economic Development

---

WILLIAM BLACKMER, WORKFORCE DEVELOPMENT COORDINATOR

# Economic Development Division

---

- **Workforce Development**

- Fund training programs to improve residents' skills
- Connect residents to local job opportunities in construction and life science industries

- **Business Development**

- Main Street Programs
- Small business technical support and funding

- **Real Estate Development**

- Buying, selling, leasing surplus City property (Somerville Armory)
- Facilitate large-scale redevelopment projects (Assembly Row, Boynton Yards)

# 299 Broadway

- 287 residential units, 115 units (48%) of affordable housing
- 6 commercial spaces
- A 3000 square foot indoor community space
- A pocket park on Sewall street
- Fully-accessible pathway connecting Broadway to Sewall Street.

Visit <https://voice.somervillema.gov/winter-hill-plan-implementation> to follow the project



# Gilman Square

## Community Engagement Spring – Summer 2022

- 2 virtual workshops
- 2 in-person meetings
- 5 survey tabling events
- Over 500 individuals' comments received, and common priorities have been identified.

Based on this work, the Gilman Square Civic Advisory Committee put into words what the aspirations for redevelopment sites should include.

Visit: <https://voice.somervillema.gov/gilman-square-plan-implementation>

For more information.





# Office of Housing Stability

---

ELLEN SHACHTER, DIRECTOR

## What We Do:

Work to prevent the involuntary displacement of Somerville residents; to assist residents who need help finding new housing; and to develop policies and programs that combat displacement and enhance housing stability.



## Contact Us:

**Phone: 617-625-6600 x 2581**

**URL: [bit.ly/OHS-Referral](https://bit.ly/OHS-Referral)**

## Our Services:

- **Help accessing financial assistance** to address rent and mortgage arrears, cover start-up rental costs. **Over \$4.6 million leveraged since the Pandemic.**
- Case management to help stabilize tenancies and assist with **housing search and applications for affordable housing and Section 8 vouchers.**
- **Advocacy and referrals for legal services** to prevent evictions and foreclosures.
- **Outreach and education about tenants' rights under state and local laws**, including the Housing Stability Notification Act.
- **Advice, information, workshops, and trainings for Somerville tenants, landlords, and advocates.**



## Program and Policy Advocacy



- Implementation of **stronger protections for tenants in apartments being converted to Condominiums.**
- Development, support for City Council passage, and targeted outreach to broaden awareness of the **Housing Stability Notification Act (HSNA)**, requiring landlords to provide tenants facing eviction with **language-appropriate information about rights and resources that can help them avoid becoming homeless.**
- Development in collaboration with lead sponsors on the City Council, and targeted outreach to inform landlords about an **expanded HSNA requirement to provide – at the outset of new tenancies – language-specific information about rights and resources to support housing stability.**
- Advocacy for **State Legislature passage of legislation to strengthen housing stability:**
  - **Transfer Fee to fund affordable housing development**
  - **Rent Stabilization** legislation
  - **Right to Counsel** legislation
  - **Tenant Right to Purchase** legislation
  - **Eviction Sealing** legislation

# Public Space & Urban Forestry

---

LUISA OLIVEIRA, DIRECTOR

# Public Space & Urban Forestry (PSUF)

---

- **We Create Parks**
  - Recent: Lou Ann David Park, Conway Park, Central Hill Playground, Dilboy Stadium, Healey Totlot
  - Coming Soon: Henry Hansen Park, Somerville Junction Park, Healey, Brown & WSNS Schoolyards
- **We Work with Developers to Create *good* Parks**
- **We Develop Policy**
  - Pollinator Action Plan, Open Space & Recreation Plan coming 2023

## 4. We Protect and Plant Trees



# Urban Forestry

~14,000 public trees

## Urban Forest Management Plan

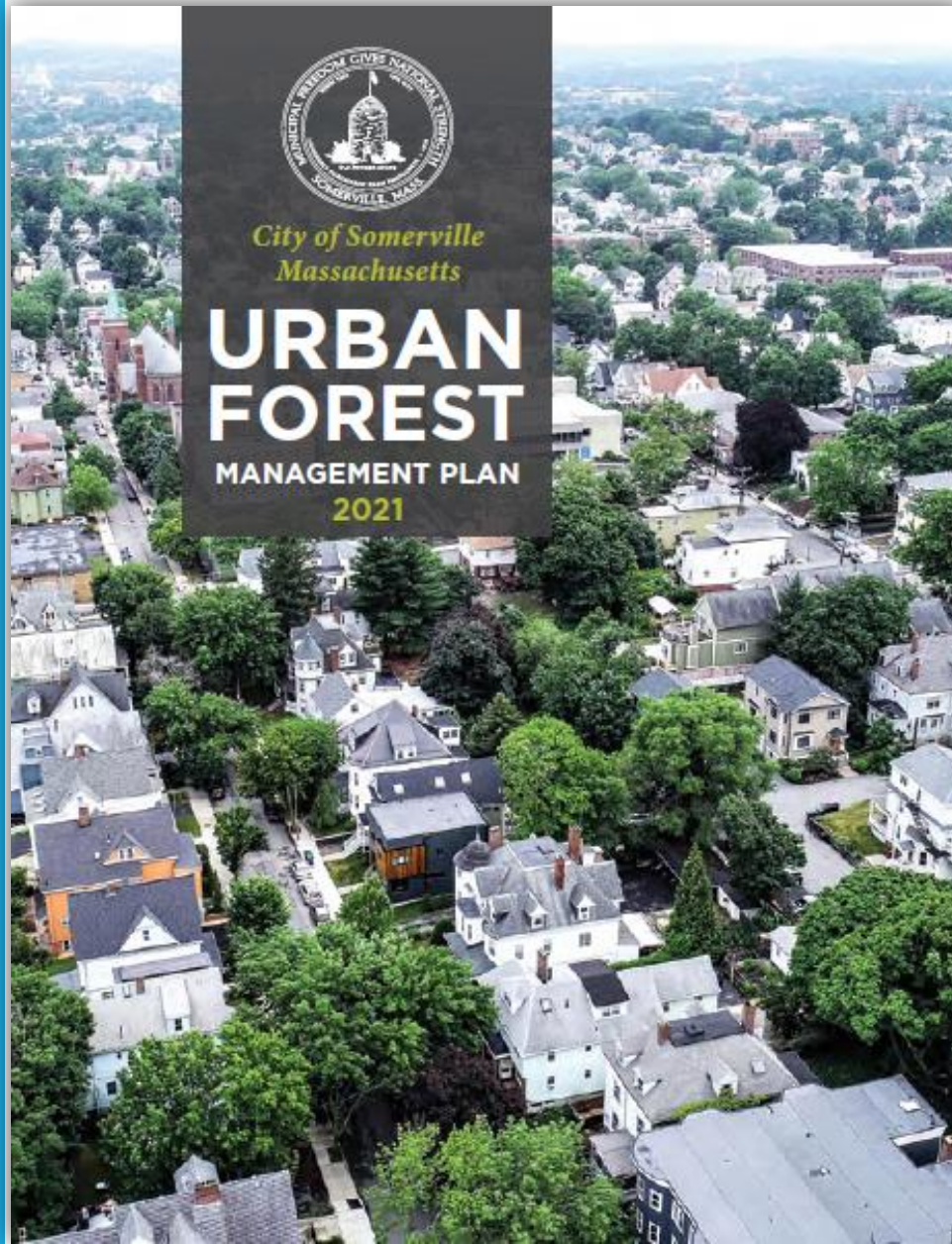
1. What we have
2. What we want
3. How to get there

## Tree Care with DPW

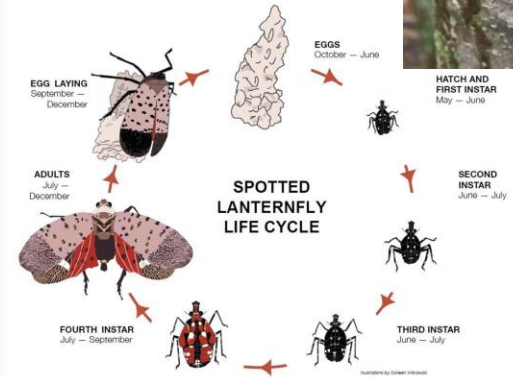
## Monitor for pests

Spotted Lanternfly –report observations to Mass RNC

[www.somervillema.gov/urbanforestry](http://www.somervillema.gov/urbanforestry)



## PEST – Spotted Lanternfly




## PEST – Emerald Ash Borer




Spotted lanternfly life cycle illustration by Colleen Witkowski, Penn State.

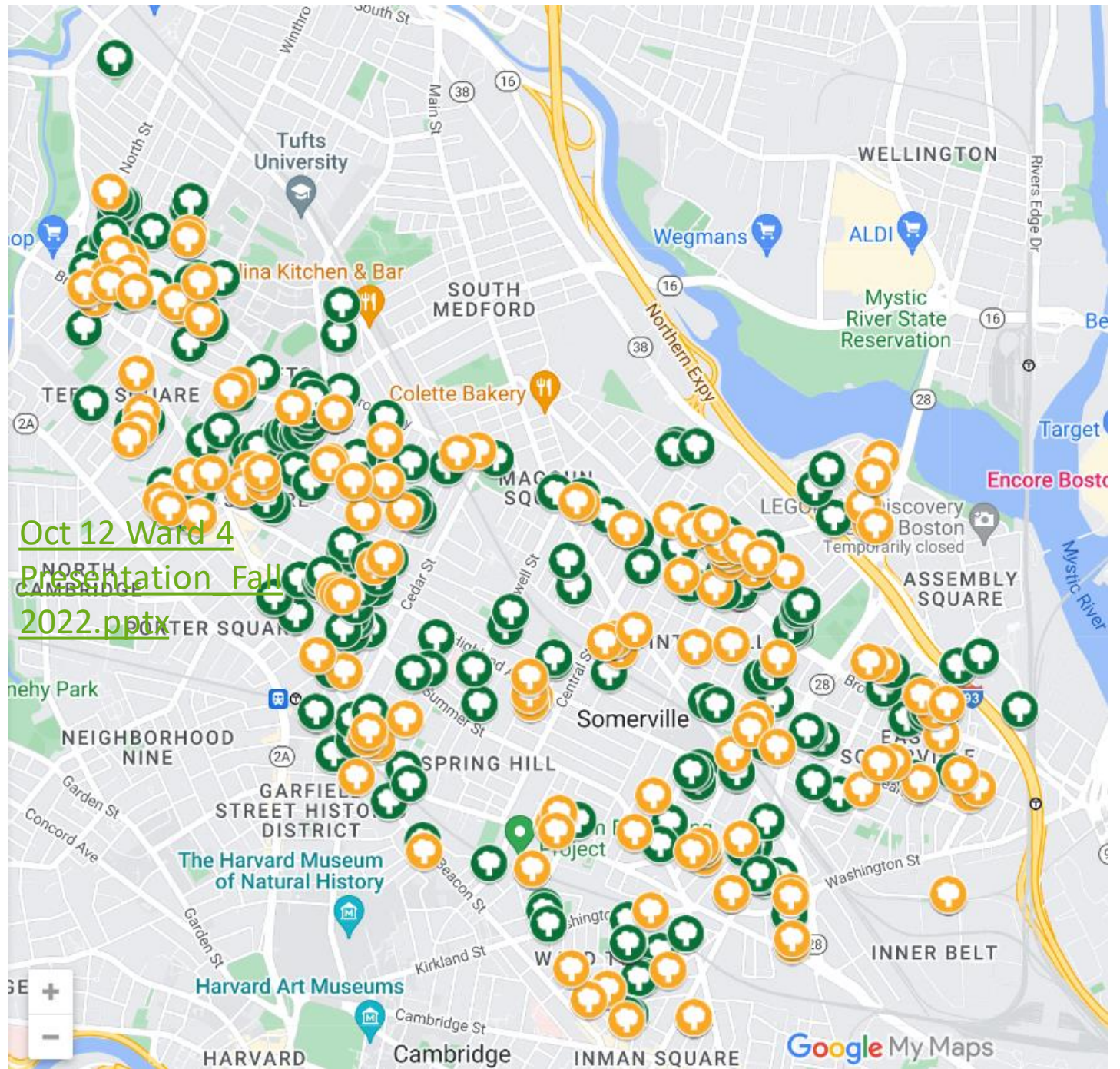
# Urban Forestry

Plant 350+ trees per year

Fall 2021: 270 

Spring 2022: 157 

Fall 2022 goal:  
195 trees



# Healey Schoolyard, field & ADA path

**Completion dates:**

Schoolyard in late fall

Field in spring 2023





# Engineering and Mobility

---

ALEXANDRA KLEYMAN, SENIOR TRANSPORTATION PLANNER

BRIAN POSTLEWAITE, DIRECTOR OF ENGINEERING

# Green Line Extension (GLX)

---

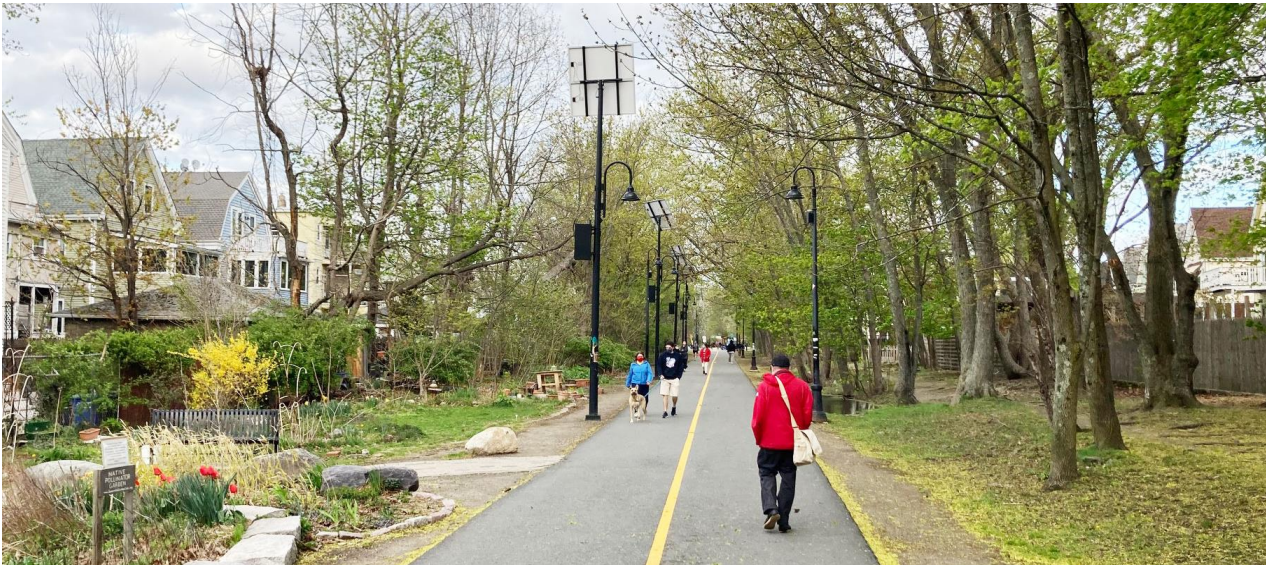
- Green Line Medford Branch Opening: November 2022
- Photo: Test train at Magoun Square Station



For more information please visit: [www.somervillema.gov/glx](http://www.somervillema.gov/glx)

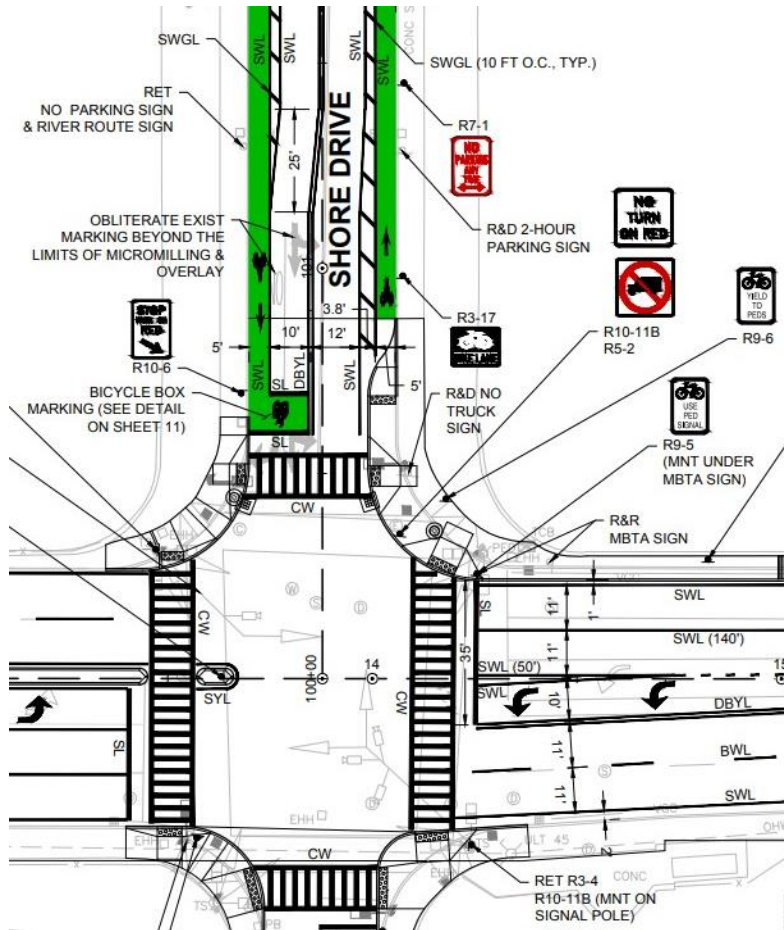
# Community Path Extension (CPX)

- Community Path Extension Opening: December 2022
- Year-Round Maintenance Challenges



# Street Construction

- Shore Drive at Mystic Avenue crosswalk improvements
- Speed Humps
- Temple at Sewall & Heath pedestrian islands



# Lead Service Line Replacement Program

The City of Somerville has received funding through the Massachusetts Water Resources Authority's (MWRA) Lead Loan Program to replace the entire length of a property's lead or other non-copper water service line, at no charge to the property owner.

In 2019, 450 addresses were identified by the Water Dept with a lead water line.



In 2021, the City replaced 58 water lines and identified 11 that were replaced by property owner.

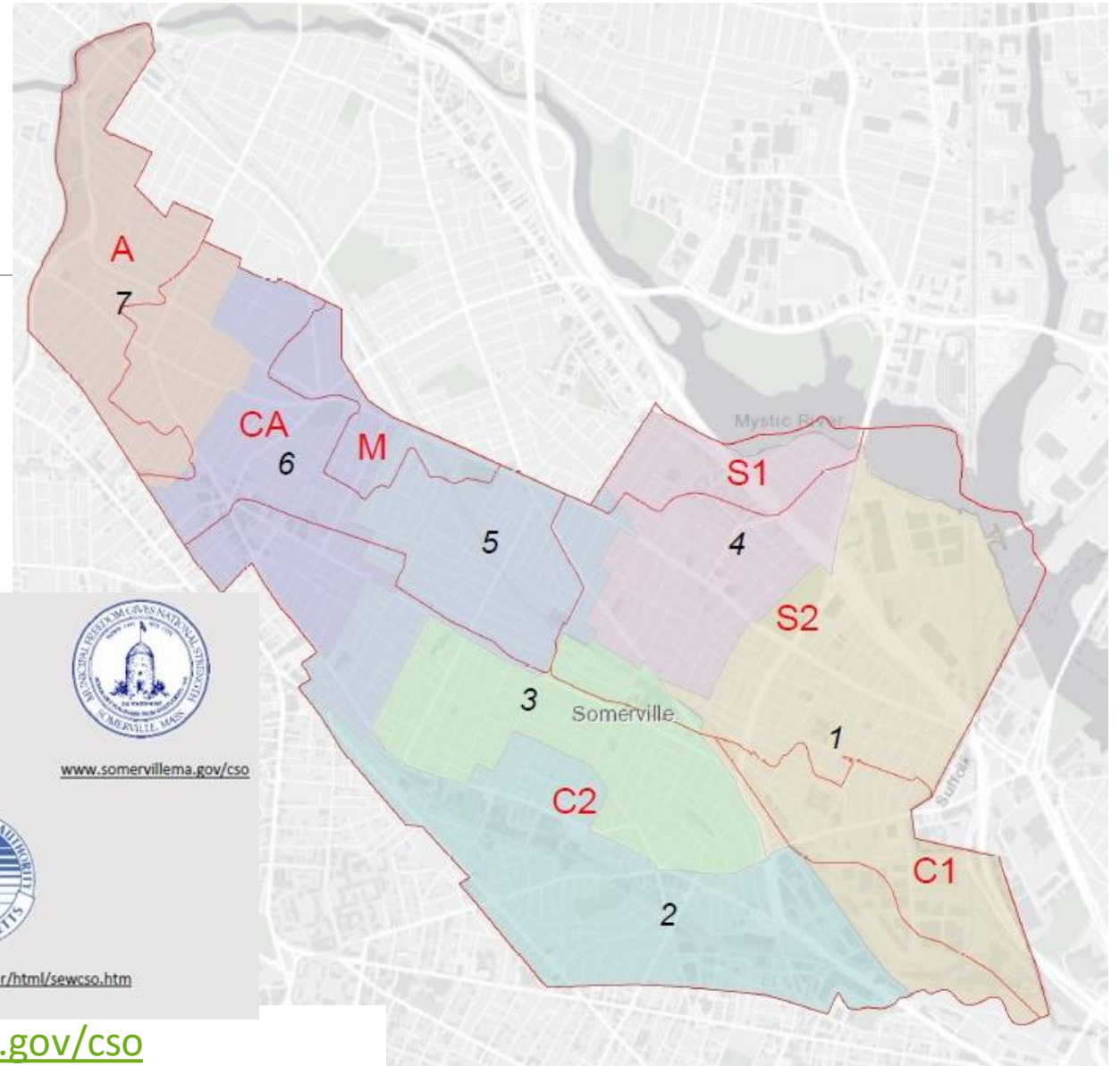
In 2022, the City replaced 102 water lines and identified 23 that were replaced by property owner.

The City is aiming to replace 100+ services in 2023, please visit [somervillema.gov/leadservices](https://somervillema.gov/leadservices) to see if your water service line is eligible for a no-cost replacement.

**Questions?** Please email [leadservices@somervillema.gov](mailto:leadservices@somervillema.gov).

# Stormwater & CSOs

- Citywide Flood Mitigation and Water Quality Improvements Plan
- Expected Finalization: November 2022
- Joint CSO plan initiated



For more information please visit: [www.somervillema.gov/cso](http://www.somervillema.gov/cso)  
[voice.somervillema.gov/citywide-drainage-and-water-quality-master-plan](http://voice.somervillema.gov/citywide-drainage-and-water-quality-master-plan)

# Racial and Social Justice Department

---

DENISE MOLINA CAPERS, DIRECTOR

ADRIENNE POMEROY, ADA COORDINATOR



# Racial and Social Justice Department

The Department of Racial and Social Justice (RSJ) leads the City of Somerville's equity efforts and collaborates with city departments, constituents, and stakeholders to eliminate the institutional and structural systems that create racial inequities, social disparities, and injustices.



# Developing the RSJ Department (Est. in 2021)

---

## ■ Social media – Twitter and Facebook



@somerville\_rsj



facebook.com/somerville.rsj

## ■ New Hires:

1. RSJ Coordinator – Amanda Nagim-Williams
2. Community Engagement Specialist – Leonor Galindo
3. Public Information Officer – Haakon Brooks



RSJ Youth League findings  
November 2022

Psychological First Aid

Hate/Bias Incidents  
November 2022

# Reimagining Public Safety

---

## Building knowledge

Staffing and Operations Analysis (March)  
Community Visioning Focus groups (August)  
Reimagining Policing and Public Safety Perception Survey (September)

## Building Capacity

RSJ Community Ambassadors to be announced October 2022

## Building Awareness

Reimagining Policing and Public Safety Micro Webpage November 2022

## RSJ Fund (Grant Program)

- The purpose of the Racial and Social Justice Fund is to provide a sustainable and enduring source of funding to dismantle systemic racism and social inequality.
- Focus groups November 2022

## Civilian Oversight

- Task Force Members – November 2022

## Commissions

- Open call for commissioners, 4 seats each: HRC, SCPD, Women's Commission

# ADA – Americans with Disabilities Act

---

## **Somerville Commission for Persons with Disabilities (SCPD)**

- 4 open seats
  - 3 for persons with disabilities, 1 for a family member of a person with a disability.
- Meets the 2nd Tuesday of the month from 6:30 pm until 8:30 pm on Zoom.

## **ADA Internal Survey**

- Majority of surveyed leadership staff has some to working knowledge of ADA.
- Informs professional development for City staff around ADA.

## **Fire Department and Police Department - Training**

- Fire Department – October 2022
- Police Department - TBD

## **ADA Community Survey - November 2022**



# Somerville Police Department

---

CHIEF CHARLES FEMINO

# SPD Status Update

---

## Community Policing Unit

- Initial program composed of 14 officers which fell to 7 officers. SPD received Regional Community Policing Award in 2017.
- Update: Officers reassigned to patrol to meet staffing of patrol cars; unit no longer exists.

## School Resource Officers (SROs) & STEPS Program

- Previously up to 3 SROs were assigned to Somerville schools (2 at SHS). The STEPS program involved up to 20 officers visiting students in a relationship-building capacity.
- Update: SROs reassigned to patrol as program was paused based on School Committee vote. STEPS program was eliminated

## Accreditation

- SPD was re-accredited by the Massachusetts Police Accreditation Commission (MPAC) on June 21, 2022. Accreditation reflects the use of best practices in areas of police management, operations, and technical support activities.
- SPD met 382 standards to achieve reaccreditation; audit takes place every 3 years to ensure compliance.

## Police Reform

- Mandatory certification of all Officers by Massachusetts Peace Officer Standards & Training Commission (POST), an independent state entity composed of 9-members (6 non-LE) appointed by the governor and attorney general. Re-certification or de-certification mandated every 3 years.

# Ward 4 Crime: Index Crime Trends

## Citywide:

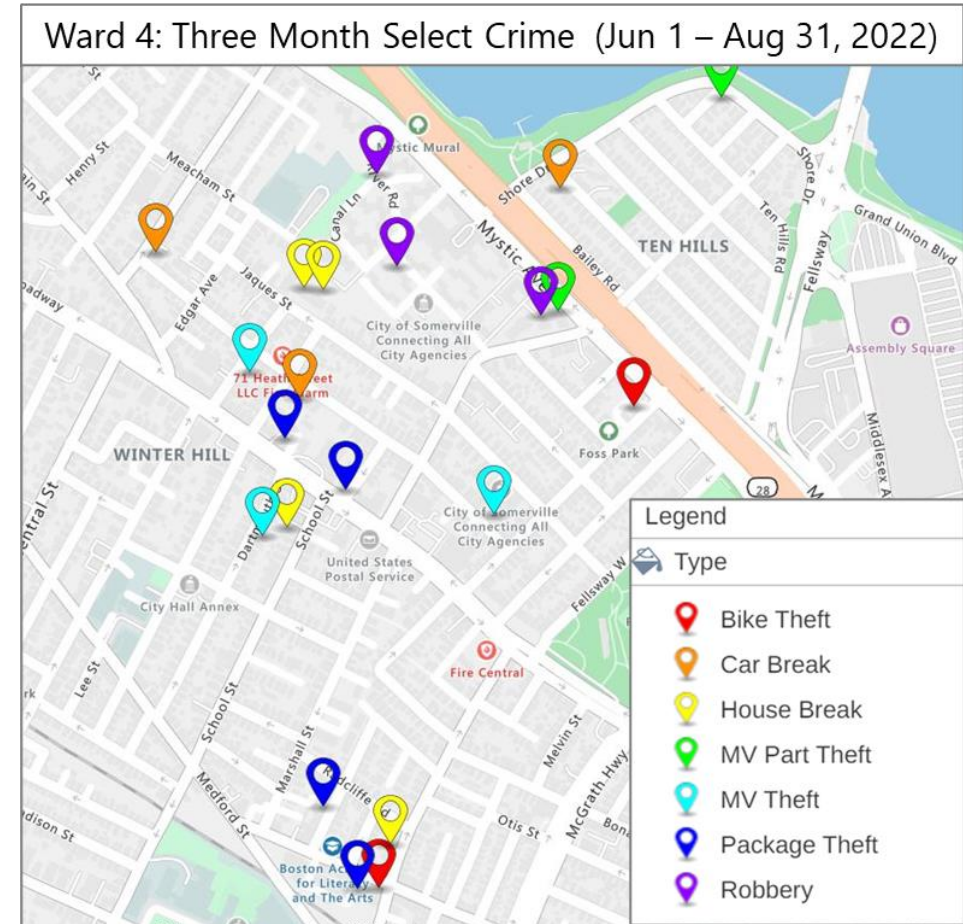
- Index crime increased 10% over one year and 11% over two years.

## Ward 4:

- Index crime increased 22% (34 incidents) over one year and 30% (43 incidents) over two years.

Note that Index Crime is composed of 8 offenses: Homicide, Rape, Aggravated Assault, Robbery, Burglary, MV Theft, Larceny, and Arson.

Index crime statistics based on previous 12 months (9/1/21 – 8/31/22) year-over-year.





# Ward 4 Crime Prevention

---

## Residents:

- **Car Breaks:** Always lock your vehicle.
- **MV Theft:** Never leave your vehicle running without occupants, even when making a quick stop.
- **Theft of MV Parts:** Call 911 to report any suspicious persons, particularly between 1:00 AM and 5:00 AM.
- **Bike Theft:** Be wary of cable locks - they are easily cut with wire cutters. Never lock your bike to wooden posts that can be broken. Keep a file of bike serial numbers and photos.
- **Package Theft:** Have mail carriers deliver packages to a location less visible from the street (side or rear door / porch).

## SPD:

- Area Cars deployed based on temporal patterns and geographical hot spots.
- Increase residents' awareness of crime prevention methods.
- One Detective assigned all catalytic converter thefts for continuity and case linkage. Member of regional taskforce.
- Investigative resources dedicated to cases of violent crime such as robbery, sexual assault, hate crime, and shootings. Property crime assigned based on Criminal Investigation Division (CID) bandwidth and case solvability.

	Contact Name	Service	Contact Info.
<b>Substance Misuse</b>	MA Substance Use Hotline	Treatment program info	800-321-5050
	Cambridge Health Alliance	Walk-ins Tue. 11:30; MA Health accepted	617-591-6051
	Caspar First Step Outreach - Wet shelter & Community Outreach Van	Assist in accessing detox.	617-661-0600
	Riverside Community Care	Outpatient; MA Health accepted	617-623-3278
	North Charles	Maintenance therapy; MA Health only	617-661-5700
	Column Health	Counseling, medication assisted treatment	339-368-7696
	Learn 2 Cope	Family support; Mon. 7 PM	1575 Cambridge St, CAM
	Family Anonymous	Family support; Tue. 7 PM	121 Washington St, MEF
	SPD, COHR Unit Therapeutic Supports, Jail Diversion	Therapeutic Supports; Jail Diversion	617-625-6600 ext. 7281
<b>Mental Health</b>	Cambridge Health Alliance	Inpatient & outpatient services	Adults: 617-591-6033 Juveniles: 617-665-3458
	BEST Team	Psychiatric emergency services; MA Health	800-981-4357
	Riverside - Child Guidance Center	Juvenile / family services	617-354-2275
	Neighborhood Counseling & Community Services	Counseling, skill & strength-based strategies	781-600-6074
	SPD, COHR Unit Therapeutic Supports, Jail Diversion	Therapeutic supports; Jail diversion	617-625-6600 ext. 7281
	Somerville Health Department	Supportive services	<a href="http://www.somervillema.gov/support">www.somervillema.gov/support</a>
	Psychology Today provider finder	Find a provider	<a href="http://www.psychologytoday.org">www.psychologytoday.org</a>
	INTERFACE Referral Service	Find a provider; Monday- Friday 9-5pm	888-244-6843 <a href="https://interface.williamjames.edu/">https://interface.williamjames.edu/</a>
<b>Domestic Violence</b>	RESPOND	Shelter, crisis hotline, services, education	Hotline: 617-623-5900, Services: 617-440-7267
	Maureen DiPaolo, SPD Family Services	Victim Witness Advocacy	617-625-1600 x 7279
<b>Sexual Assault</b>	BARCC (Boston Area Rape Crisis Center)	Free legal consultation, counseling, and education for survivors and family members of survivors	Hotline: 800-841-8371 <a href="https://barcc.org">https://barcc.org</a>
<b>Additional</b>	De Novo	Free civil legal assistance and psychological counseling specializing in work with immigrants and refugees, services based on income eligibility	617-661-1010 <a href="http://Denovo.org">Denovo.org</a>

Substance Misuse, Mental Health, Domestic Violence, and Sexual Assault Support

# Contact SPD (non-emergency)

Questions or concerns:

[Police@police.Somerville.ma.us](mailto:Police@police.Somerville.ma.us)

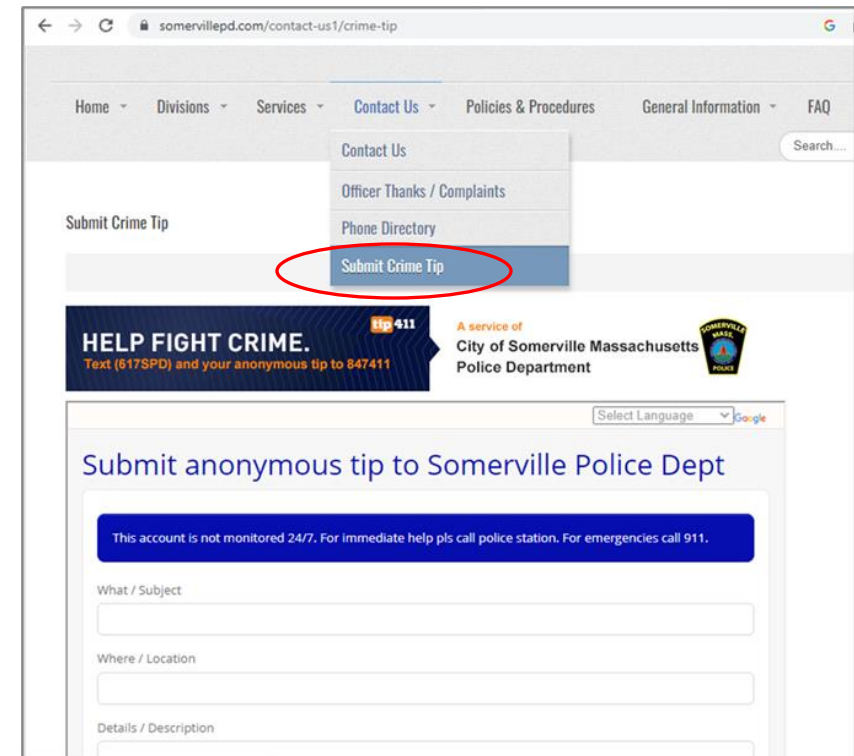
Submit an anonymous crime tip:

<https://somerillepd.com/contact-us1/crime-tip>



Community Meeting slides:

<https://www.somervillema.gov/communitymeetings>

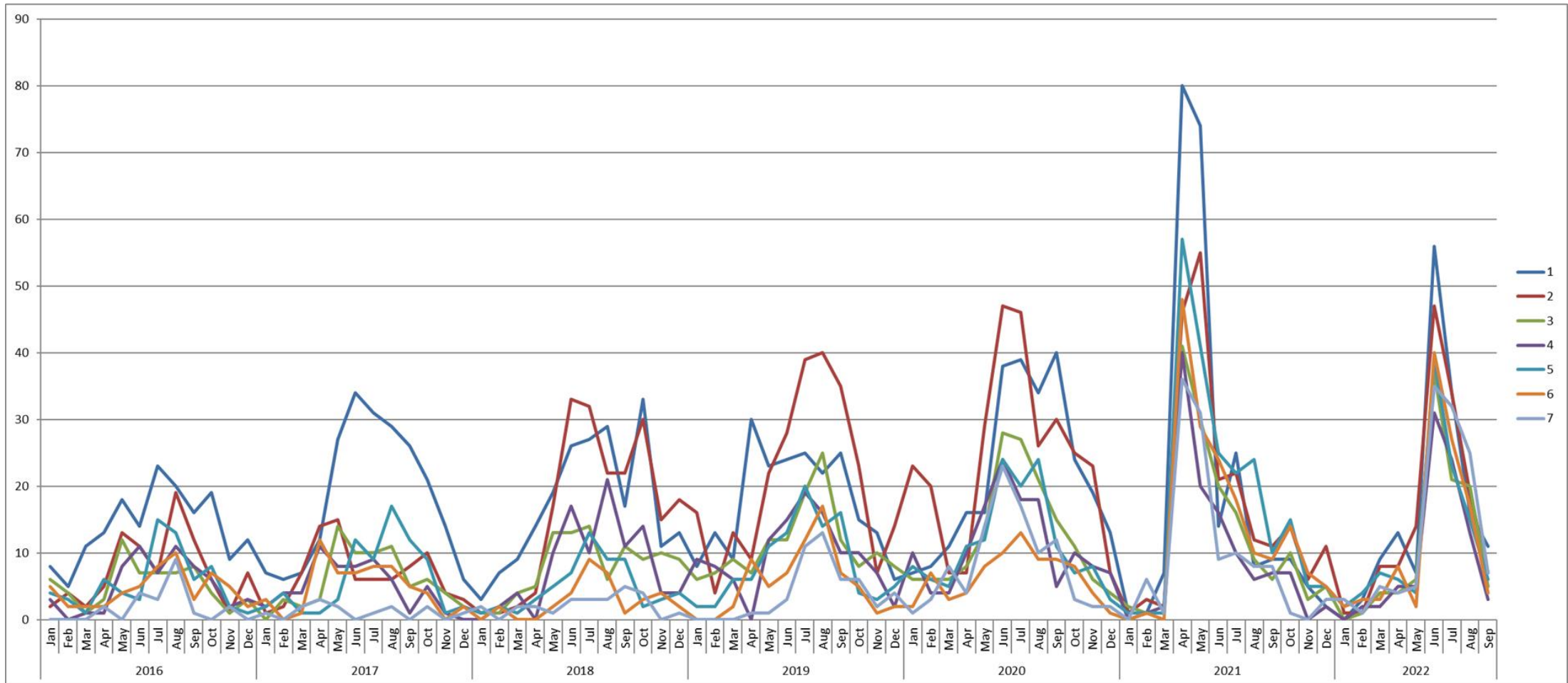


# Rodent Control & Fats, Oils and Greases (FOG) Updates

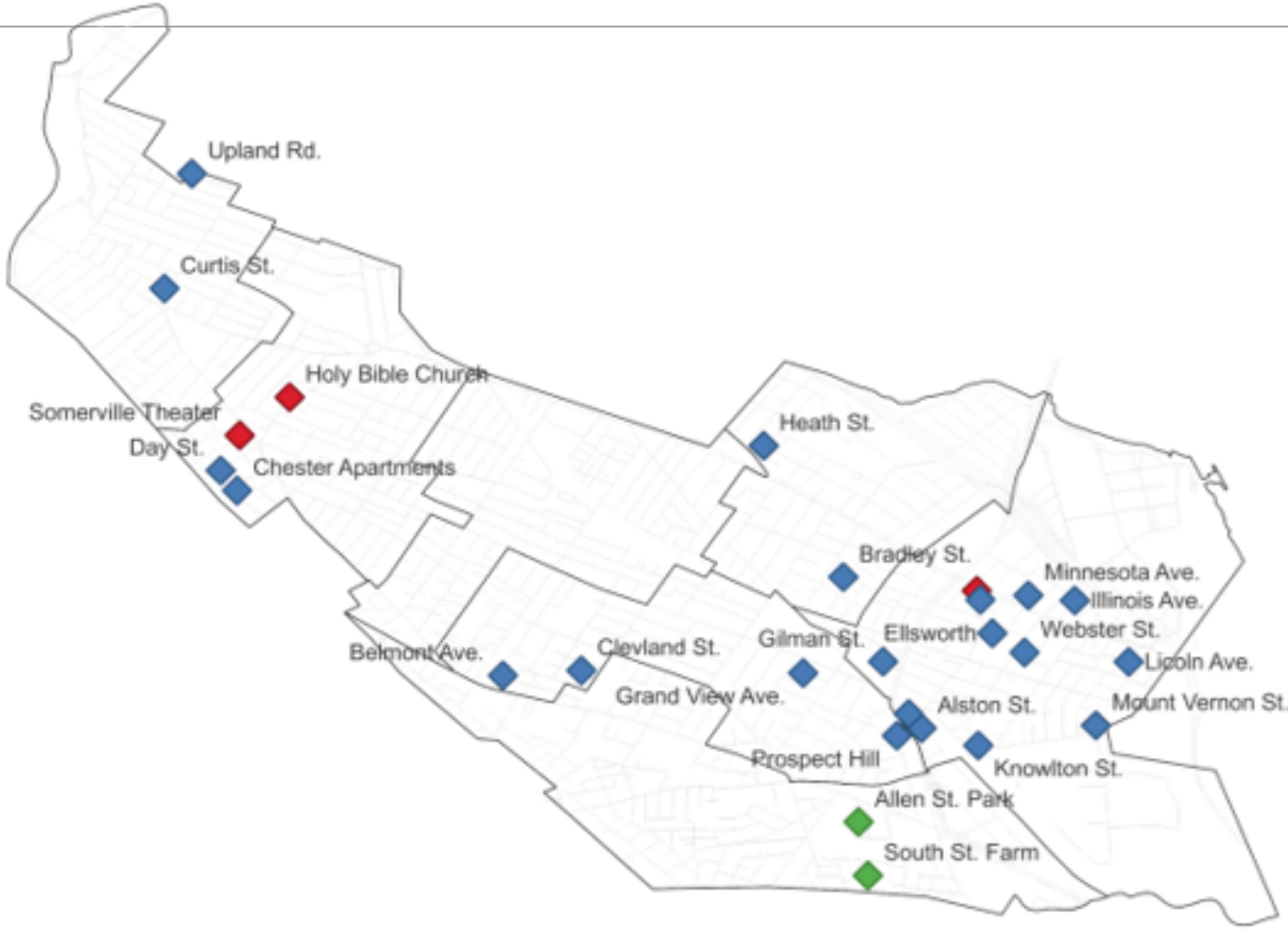
---

NICHOLAS ANTANAVICA, SUPERINTENDENT OF INSPECTIONAL  
SERVICES

# 311 Calls by Ward Annual Trends



# Community Site Visits



27 Community Visits

- Residential Visits 2022
- Commercial
- Community Garden
- Residential
- Street
- Wards



# Trash Barrel Replacement in Parks

Phase I: Glen Park, Florence Park, Perry Park, Lincoln Park, Prospect Hill, and Lexington Park. Are all primed for replacement of open barrels.

- The received quote is being processed by staff

Phase II: East Branch Library Grounds, Allen St Playground, Grimmons Park, Trum Field and Nathan Tufts Park.

- Awaiting quotes and timeline.

# Fats Oils and Greases (FOG) Regulation Update

---

- By order of the EPA and in concert with Mass DEP, the Somerville BOH has recently implemented revamped fats, oils, and greases (FOG) pretreatment regulations.
- **A FOG Management Plan will be required during the 2023 renewal period for Food Preparation Establishments as a part of their HFL.**
- City Inspectors will review documents and practices during routine inspections



# What is included in a FOG Plan?

---

- Information and Documents to include
  - Proof of licensed operators: Pumping (cleaning), maintenance, and measuring
  - Description of operations
  - Pumping, cleaning and maintenance documents of FOG Management Device and hoods
  - Average Daily discharge calculations
  - Waste manifests: Amount generated, transportation and disposal contracts
- Submit along with a renewal or application for permit
- For more information: <https://www.somervillema.gov/fog>

# Still have questions?

Email [cm@somervillema.gov](mailto:cm@somervillema.gov)

Thank you.

---