

ART FARM





City of Somerville

Joseph A. Curtatone Mayor

J.T. Scott City Council

Project Team

Richard Raiche Director of Infrastructure Asset Management

Jessica Fosbrook Director of Engineering

Fred Massaro Director of Capitol Projects

Robert Cassano Project Manager

Debora Mitrano Infrastructure and Asset Management

Gregory Jenkins Executive Director, Somerville Arts Council

Luisa Oliveira Public Space & Urban Forestry

Sarah Lewis Director of Planning and Zoning



Architecture

GROUNDVIEW

Landscape Architecture



Lighting Design



Mechanical Engineering

SIMPSON GUMPERTZ & HEGER



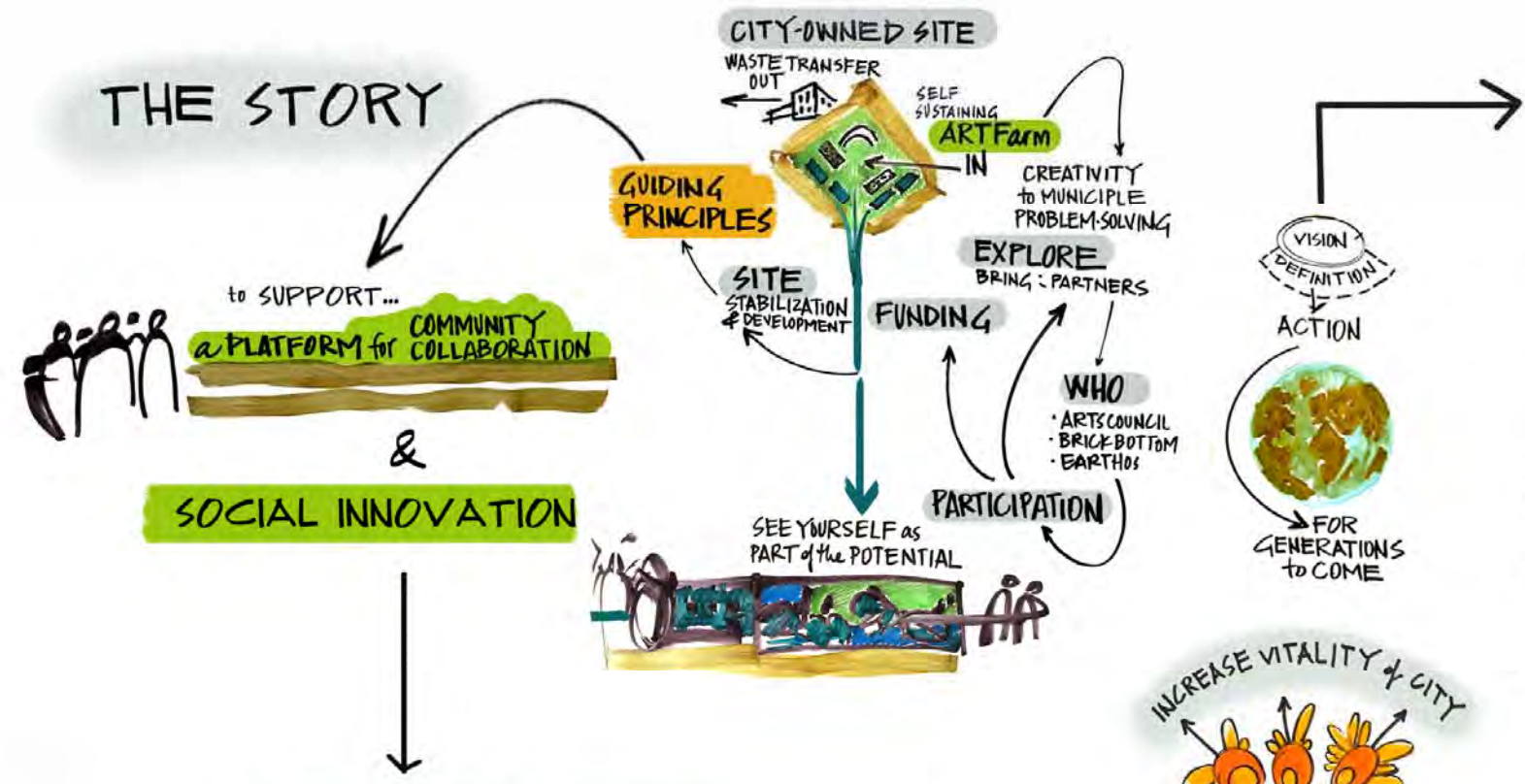
Engineering of Structures
and Building Enclosures

Structural Engineering



OPM

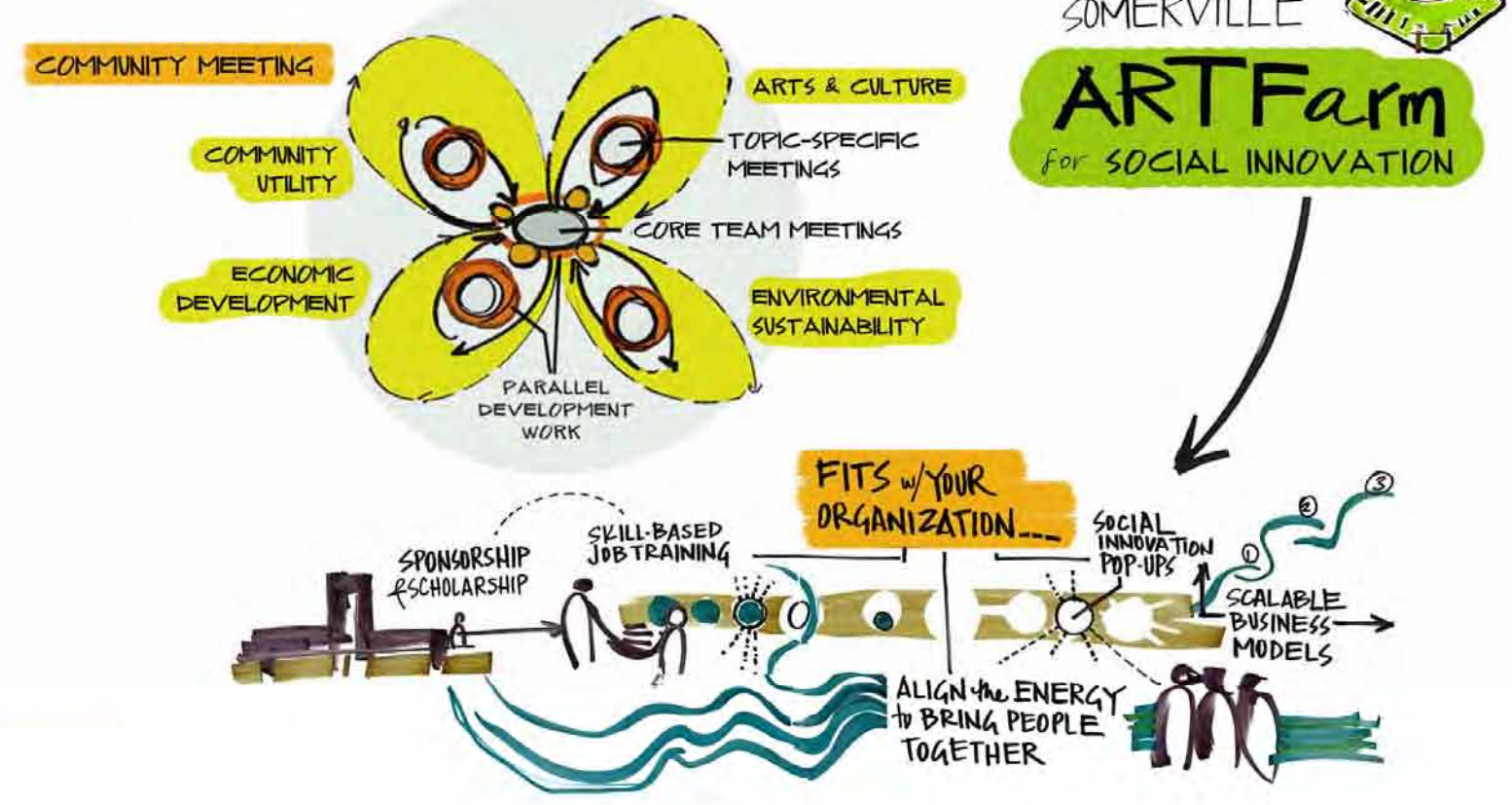




PROPOSED GUIDING PRINCIPLES

- ACCESSIBLE:**
a year-round, informal, eclectic, welcoming, and engaging atmosphere
- TRANSPARENT:**
open decision-making processes, organizational structure, and methods of sharing
- INCLUSIVE:**
for all types of people & walks of life
- WE > ME:**
lack of ego in service of the whole
- PEOPLE > PROFIT:**
non-traditional ways of measuring success, with the motto "Pay it Forward"
- SUSTAINABLE, HOLISTIC APPROACH:**
self-sufficient, bio-diverse, regenerative, zero-carbon, waste free, with green technology and productive landscapes
- RISK TAKING:**
re-inventive, taking chances and pushing boundaries within agreed parameters (some areas enforced & some area free range) - as part of the organizational dna
- EDUCATIONAL:**
leadership development through year-round programming that encourages curiosity
- PART OF URBAN FABRIC:**
integrated with the city
- SOCIALLY INNOVATIVE:**
partnerships expand within and beyond the borders of Somerville, between the city, individuals and organizations, to cultivate social capital
- AN INCUBATOR FOR INCUBATORS,** with mechanisms for supporting ideas and initiatives, including new models of: cooperatives, financing, membership, maturity, and flexible policy
- AN ICONIC SYMBOL:**
awesome/wow factor...the big revel (iconic symbol for somerville)

DEVELOPMENT & ENGAGEMENT PROCESS



The background of the entire image is a repeating pattern of small, stylized icons representing various aspects of sustainability, such as recycling, energy, and nature. The icons are rendered in white and are scattered across the entire background. The background is divided into four horizontal bands of different colors: light green at the top, blue in the middle, purple in the lower middle, and teal at the bottom. The text is centered in each band.

SUSTAINABILITY

CULTURE

COMMUNITY

DEVELOPMENT



We Heard: Put More Park in the Farm

- 5th Largest Open Space – 2 acres
- walking path
- discovery elements
- seating (permanent/movable)
- community table
- lighting



Where we've been
ArtFarm Design
Schedule

Where we've been

ArtFarm Design

Schedule

Where we've been

2014	January	Art Farm Focus Group Session # 1: Environmental Sustainability
	February	Art Farm Focus Group Session # 2: Arts & Culture
	March	Art Farm Focus Group Session # 3: Community Utility
	May	Art Farm Focus Group Session # 4: Economic Development
2015	Fall	Design Team Hired
2016	Spring	SMARTFarm Report
	Summer	Greenhouse & Refrigerator Installation, Remediation of Contaminated Soil Begun
	December	Community Meeting at Armory
2017	Summer	Remediation of Contaminated Soils Completed
	Fall	Electricity Brought on Site, CPA Application
	December	Mayor Commits to ArtFarm as Permanent Space with Infrastructure Below
2018	Spring	Community Meeting at Argenziano School
	June	Capital Projects assumes management and hires Owners Project Manager
2019	September	Meeting with Mayor
	Today	Community meeting



Poplar St. Pump
Station / ArtFarm
Phase 2

ArtFarm Phase 1

Refrigerator
Shape Up Somerville

Greenhouse
Operations
Green City Growers

World Farmers
Program
Groundwork Somerville



SAC Events

New England Music Festival (Boston Hassle)

Sat, June 16 (RD June 23) – all day

Stephod Music Festival

Sat, Aug 18 – all day

Lia Music Festival

Sat, Sept 8 & 9

MUM

Sat, Sept 22, 8pm – 12am

HONK volunteer event

Sat & Sun, Oct 6 & 7 – evening



Where we've been

- **ArtFarm now a permanent building**
- **Owner's Project Manager hired**
- **Input from Planning and Zoning**
- **CPC funds recommended**



Where we've been

ArtFarm Design

Schedule



Rain Garden

Tree Lab

Greenhouse

The Shed

Festival Plaza

ArtBarn

Gather

Festival Grove

Phase 2

McGrath Highway

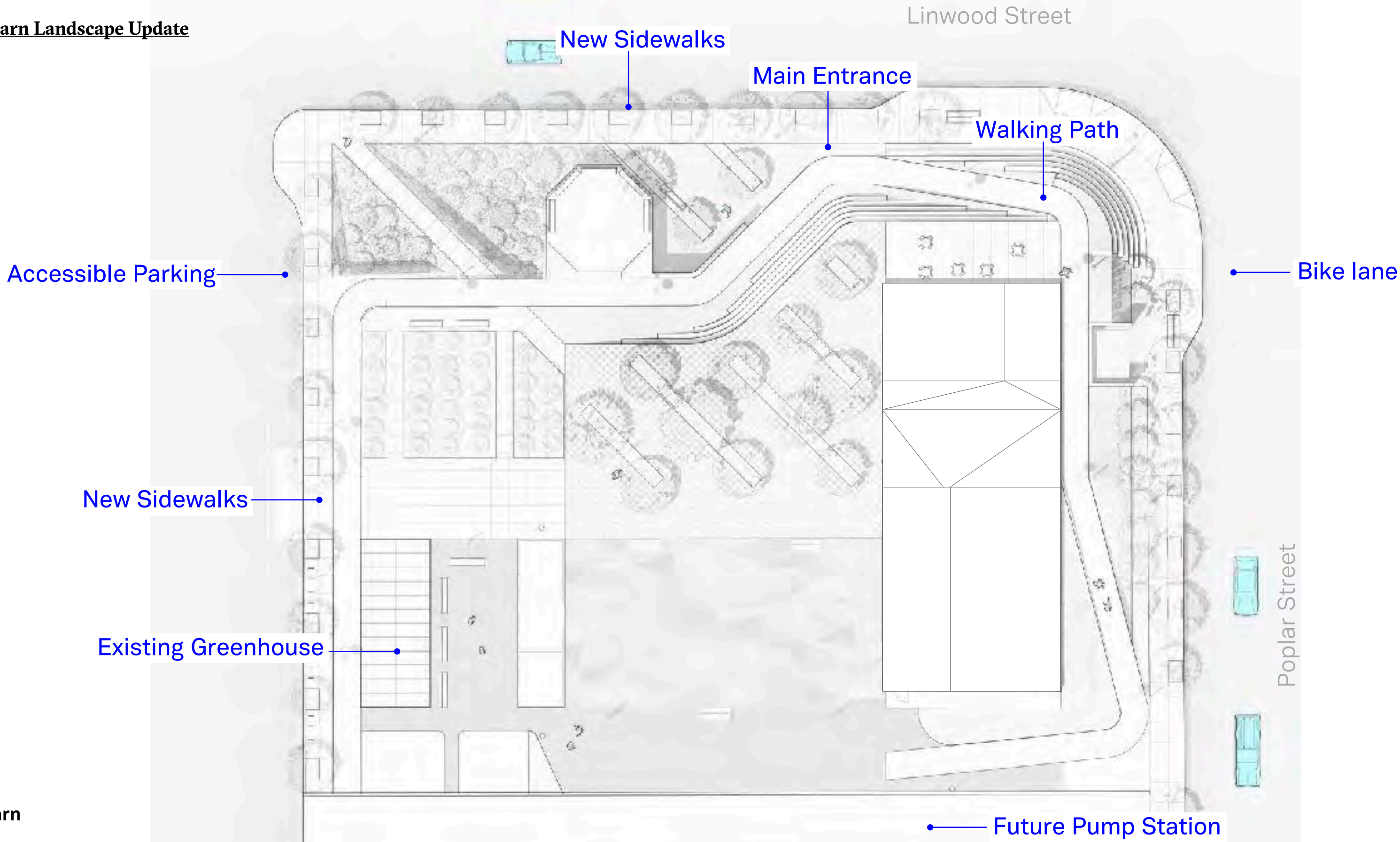
Linwood Street

Poplar Street





ArtBarn Landscape Update



New Sidewalks

Main Entrance

Walking Path

Accessible Parking

Bike lane

New Sidewalks

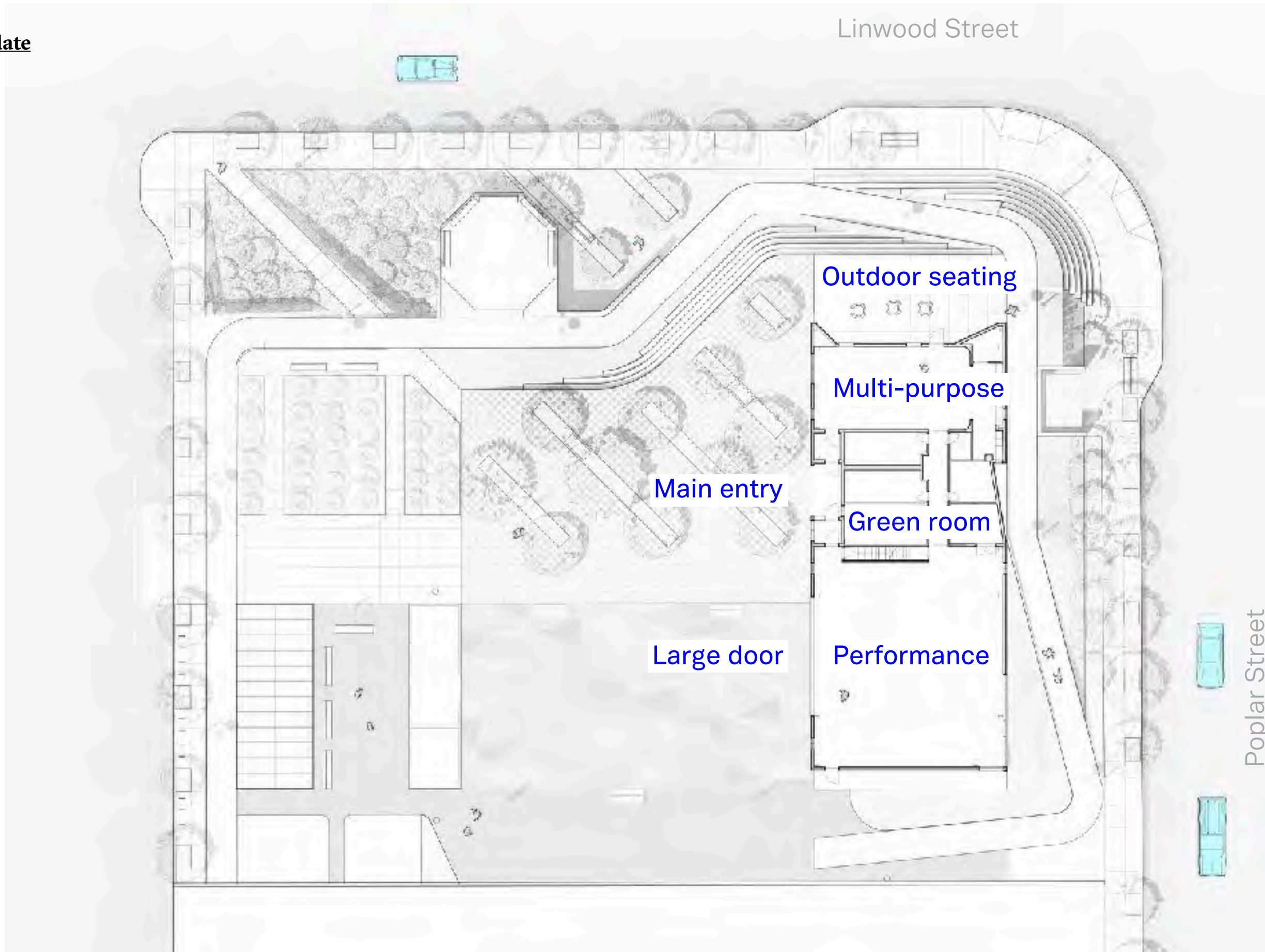
Existing Greenhouse

Future Pump Station

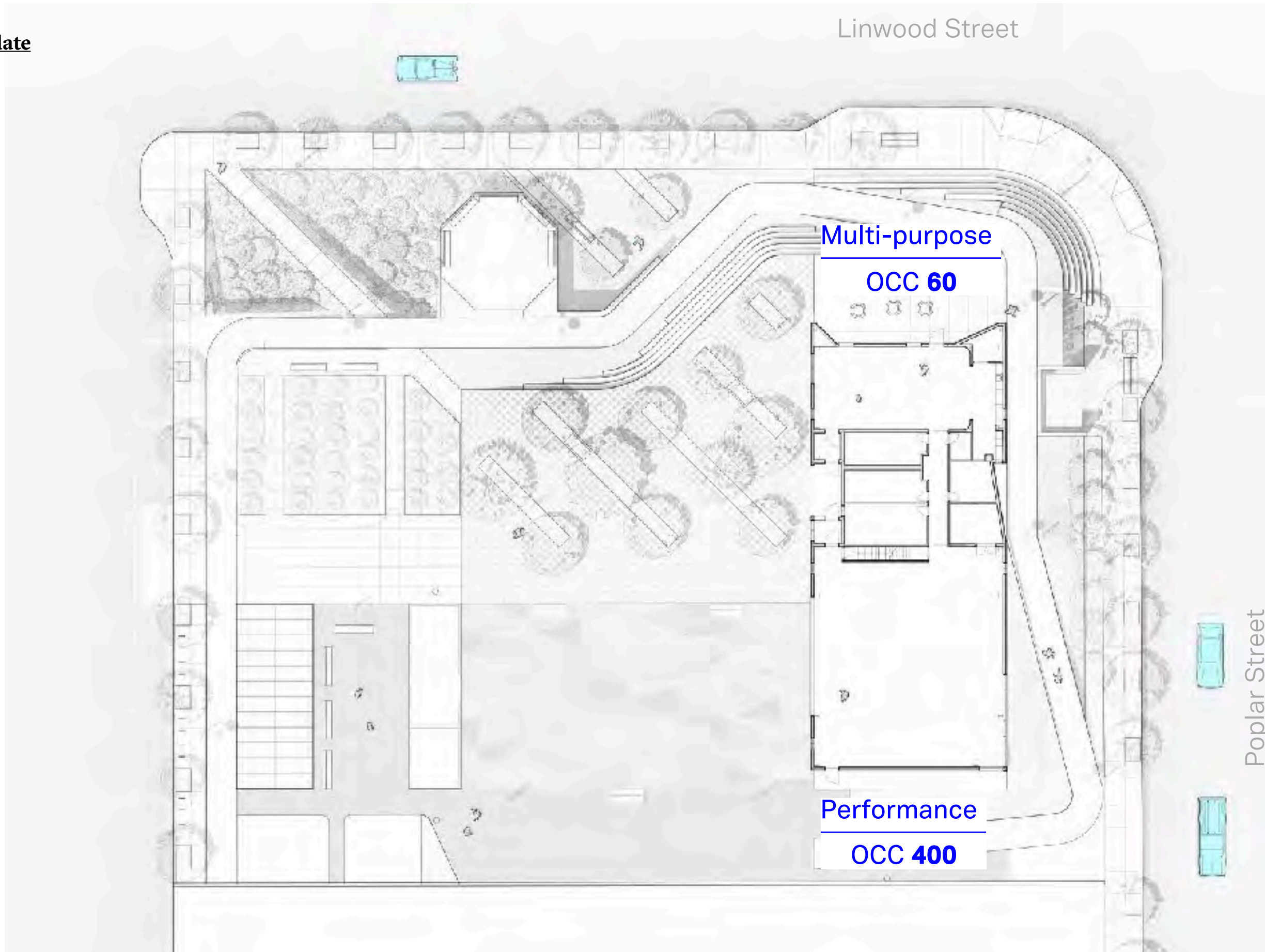
Linwood Street

Poplar Street

ArtBarn Program Update



ArtBarn Program Update



ArtBarn Program Update



Linwood Street

Poplar Street

Agriculture education

Play

Art

ArtBarn Program Update

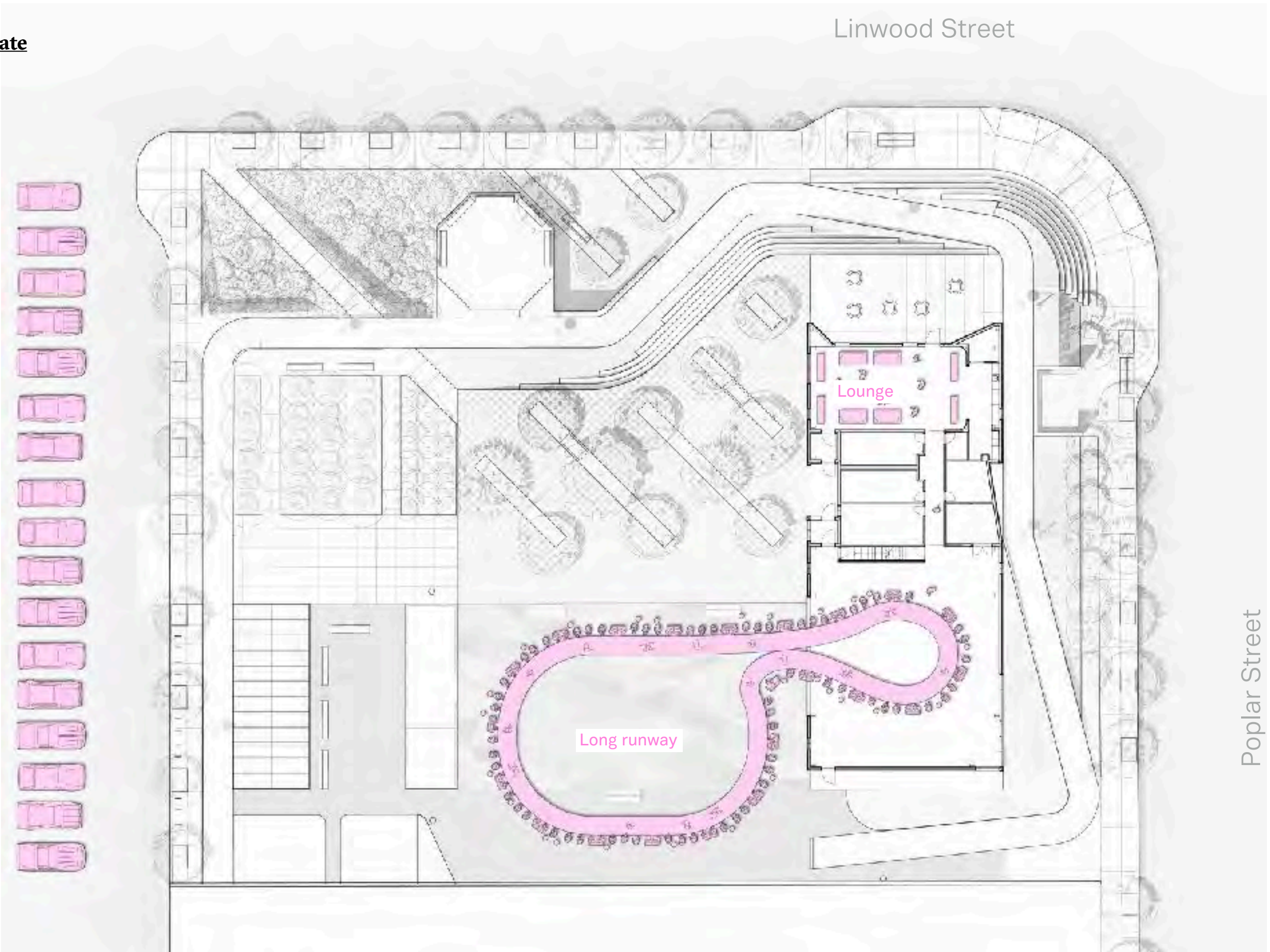
Linwood Street



Poplar Street

Wedding

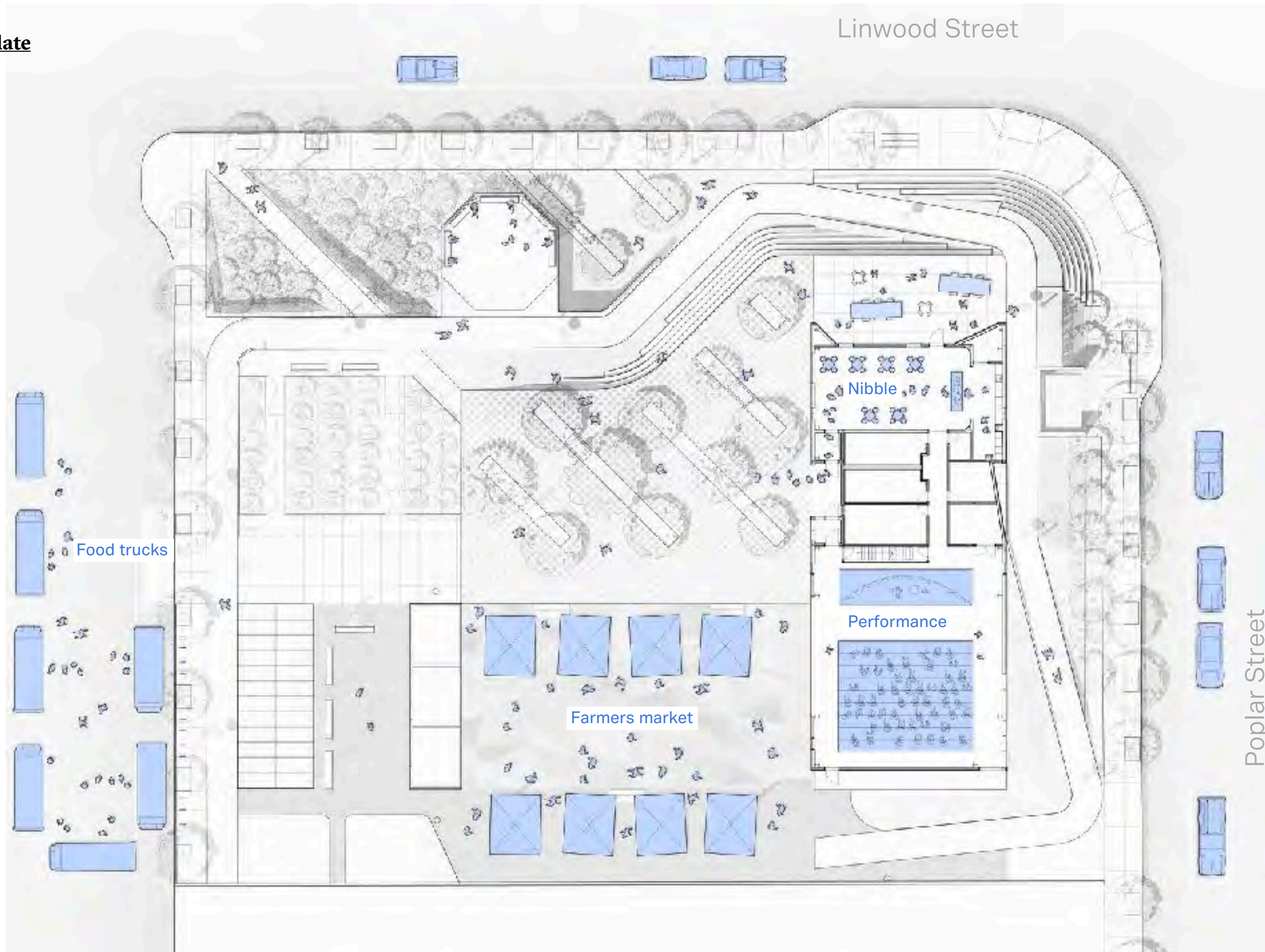
ArtBarn Program Update



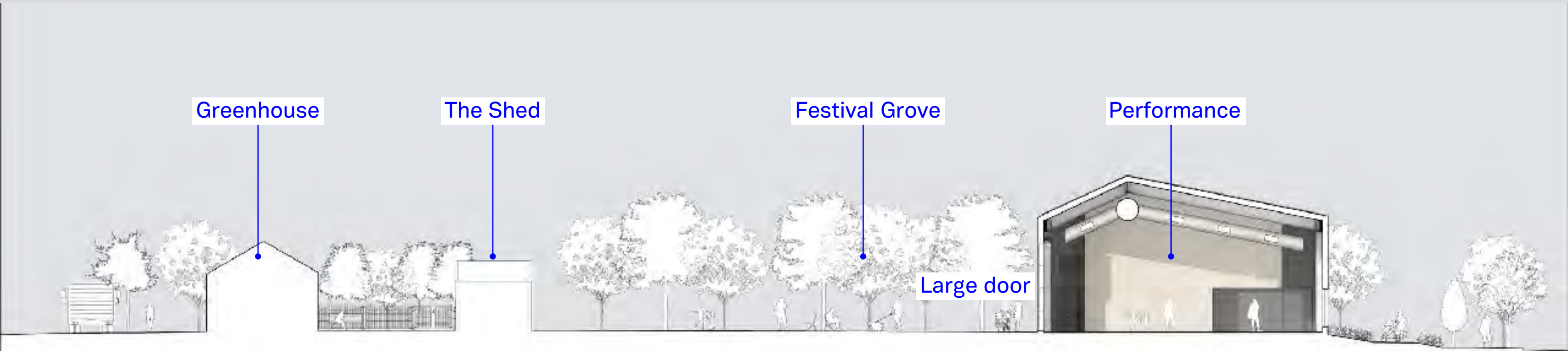
Linwood Street

Poplar Street

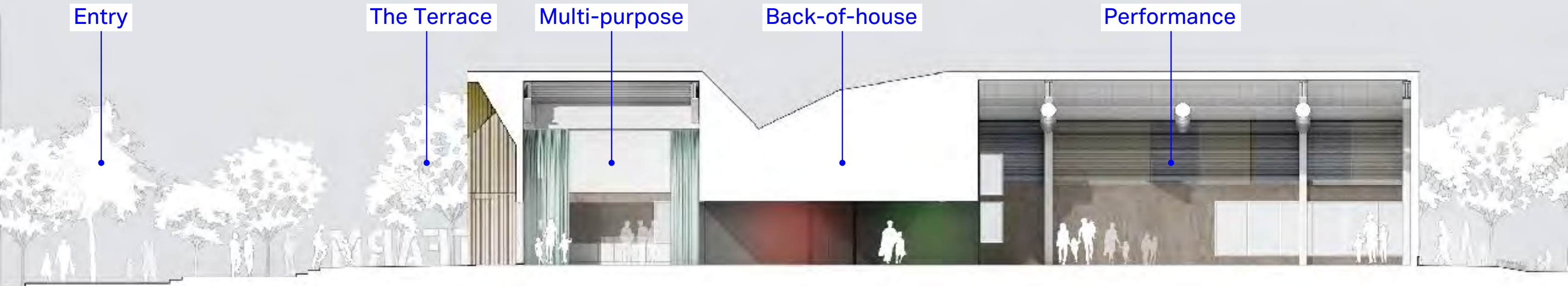
ArtBarn Program Update



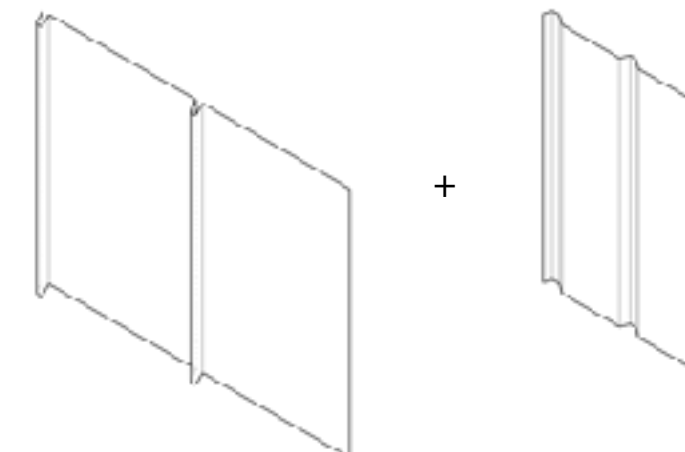
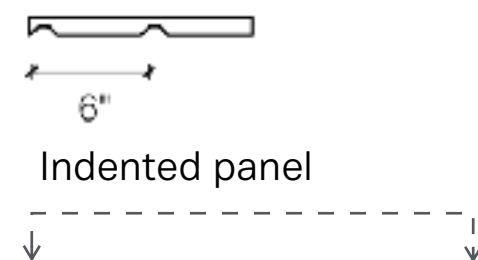
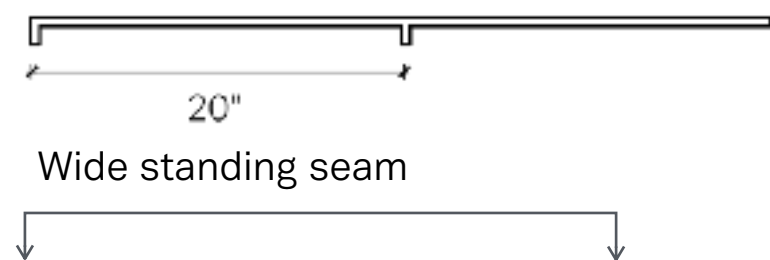
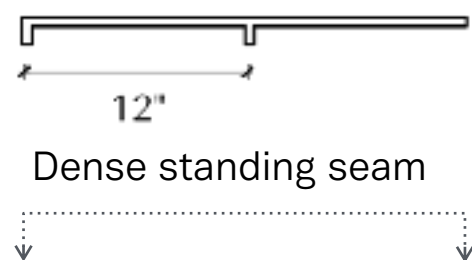
ArtBarn Program Update



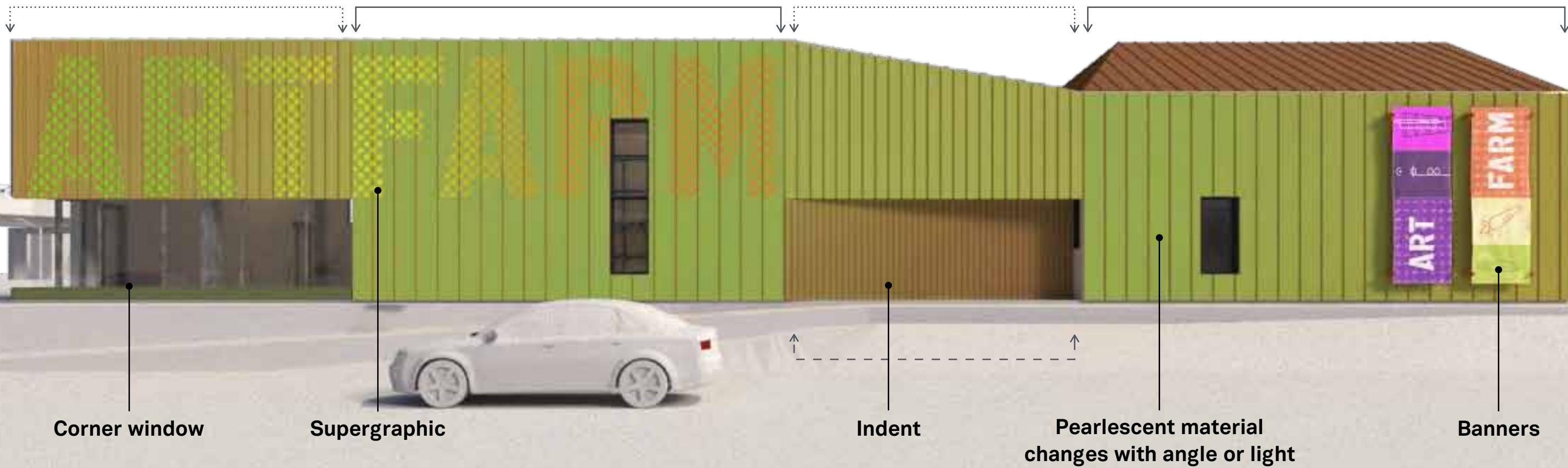
ArtBarn Program Update



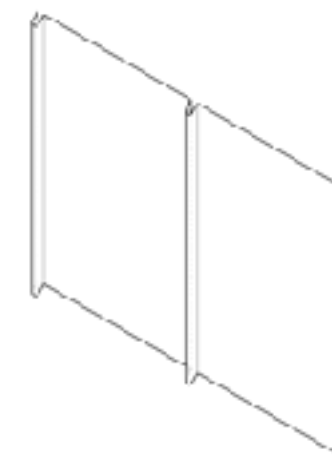
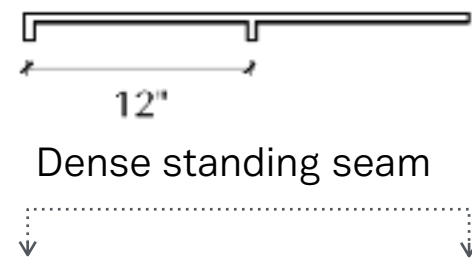
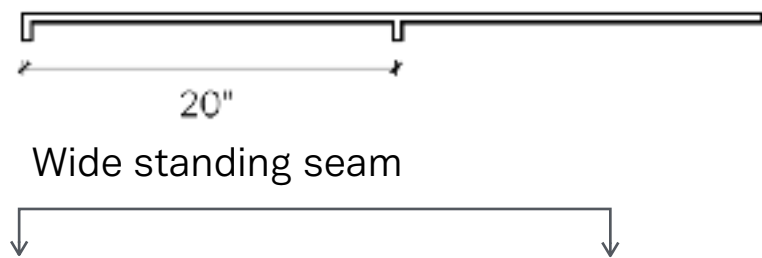
ArtBarn Facade Update



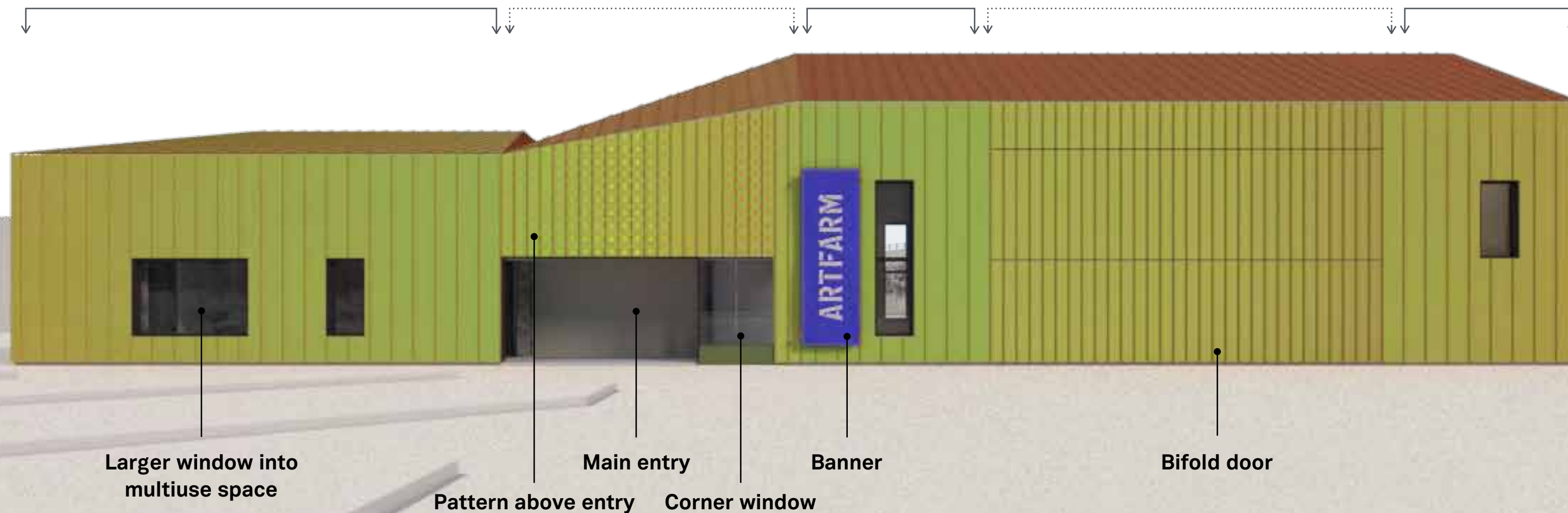
Poplar Street Elevation



ArtBarn Facade Update



ArtFarm Elevation





ArtFarm View from Linwood



ArtFarm View towards Joy Street Studios



ArtFarm View from Poplar and Linwood



ArtFarm Poplar Street elevation



ArtFarm View to ArtBarn







ArtFarm Community Space



ArtFarm Performance Space



ArtFarm Performance Space



ArtFarm View from Linwood Street



ArtFarm View from Linwood Street

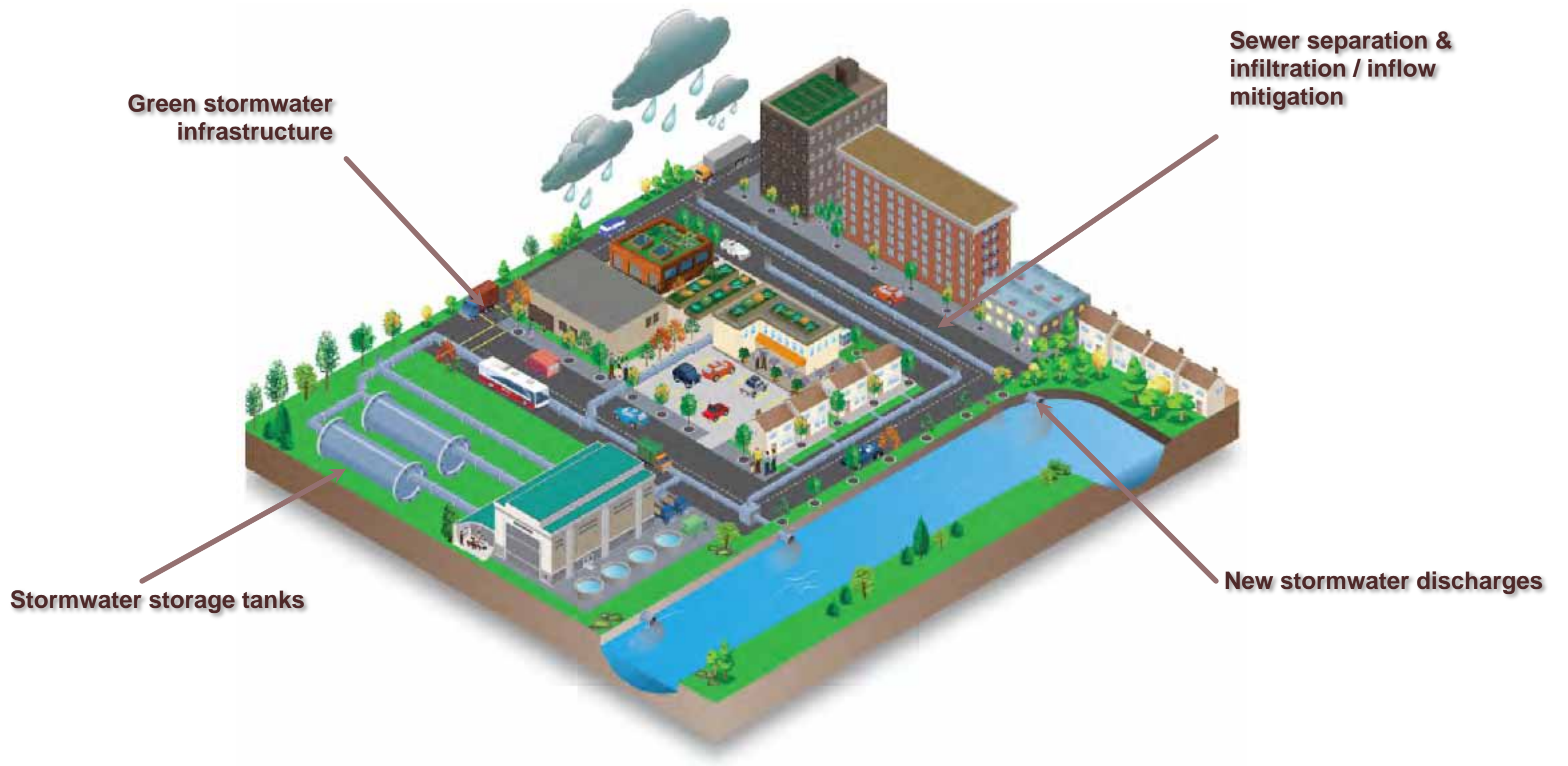


ArtFarm Aerial View



Stormwater Infrastructure

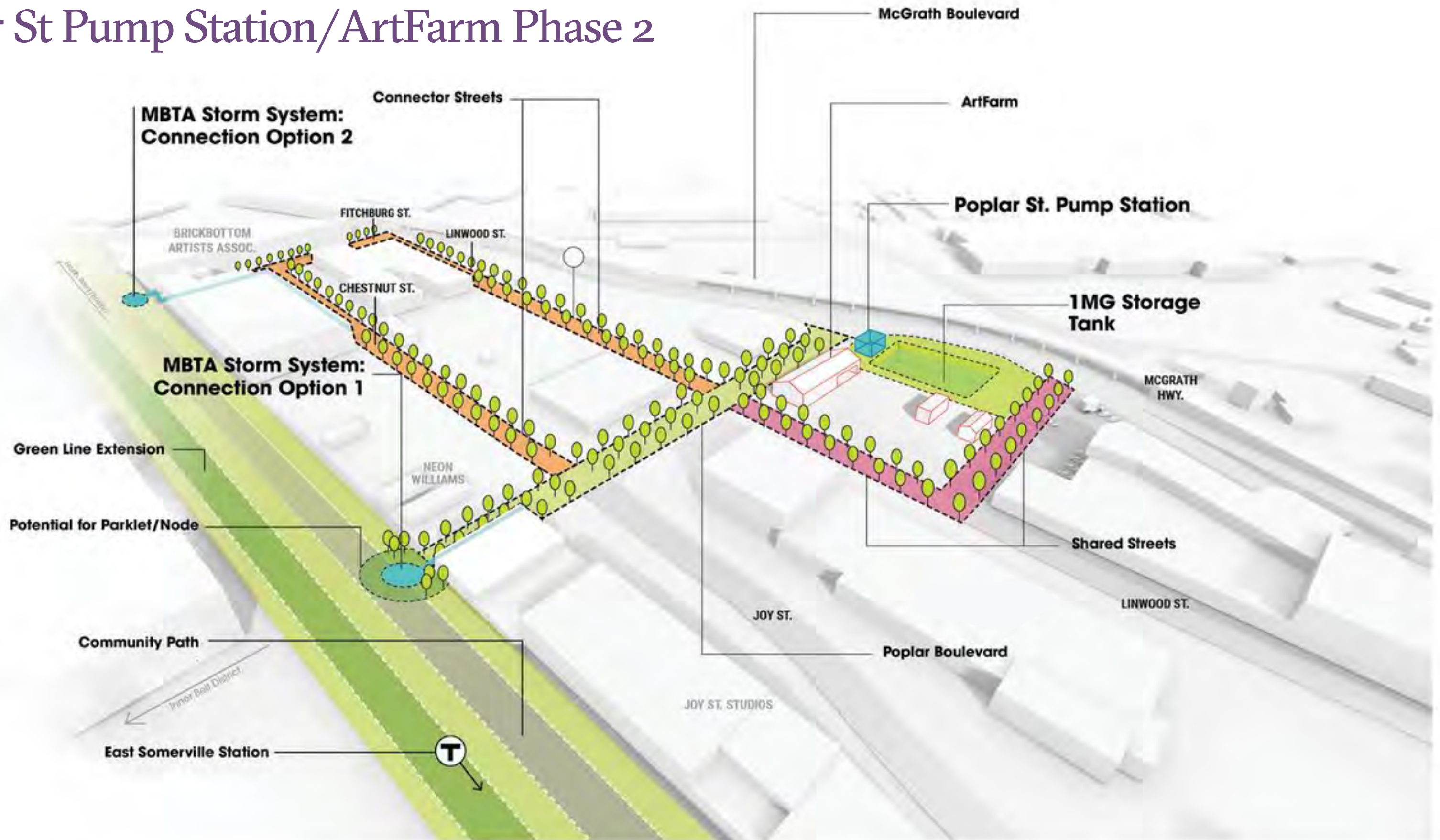
Stormwater Infrastructure Strategies



Projects In Flight



Poplar St Pump Station/ArtFarm Phase 2



Where we've been

ArtFarm Design

Schedule

Next Steps

Fall/Winter ZBA Review, Carbon Neutral report, Construction documentation

Winter 2020 City council and Finance Committee

Spring 2020 Bid Phase and Award,
Phase Two community meeting

Summer/Fall 2020 Construction begins

