

# Waste Wizard

RECYCLE WISE. SORT SMART.

Not sure how to dispose of something?  
Ask our Waste Wizard at:  
[somerillema.gov/wizard](http://somerillema.gov/wizard)



Type the name of an item and we'll tell you how to recycle or dispose of it.

SEARCH



**CLOTHING & ACCESSORIES:** Simple Recycling provides **free** textile collection for residents. To view a list of items that are included with this service or to schedule a pickup, visit [simplerecycling.com](http://simplerecycling.com) or call 866-835-5068.



**YARD WASTE:** Place curbside on your regular trash day during yard waste weeks (see calendar) or drop-off year-round at DPW weekdays (with proof of residency). Please store in paper bags only (no plastic) or barrels labeled with "Yard Waste Only" stickers (contact 311 for stickers). Tie branches into bundles no larger than 3 ft x 3 ft.



**HOUSEHOLD HAZARDOUS WASTE (HHW):**

The City will host HHW collection events on the first Saturday between April and November (see calendar). Please visit [somerillema.gov/trash-and-recycling](http://somerillema.gov/trash-and-recycling) for more information.



**DEPARTMENT OF PUBLIC WORKS:** DPW is at 1 Franey Road. Yard Hours: 8:30 AM - 12:00 PM, 1:00 PM - 3:30 PM Monday - Friday  
DPW Office Hours: 8:00 AM - 4:00 PM Monday - Friday



**QUESTIONS?** Contact **311 at 3-1-1** or 617-666-3311, [fb.com/311Somerville](https://fb.com/311Somerville), [@311Somerville](https://twitter.com/311Somerville), or via the 311 app.

City of Somerville  
**Environmental Service Guide 2024**  
Mayor Katjana Ballantyne



Somerville has updated  
Climate Forward, the City's  
climate action plan.



Learn more about the update  
and how to get involved.

Sign up for the  
SustainaVille newsletter.

## 2024 TRASH, RECYCLING, & YARD WASTE CALENDAR

Sign up for our **Waste Wizard Alerts** for pickups, delays, and yard and hazardous waste days at [somerillema.gov/wizard](http://somerillema.gov/wizard).

April							May							June						
Su	Mo	Tu	We	Th	Fr	Sa	Su	Mo	Tu	We	Th	Fr	Sa	Su	Mo	Tu	We	Th	Fr	Sa
						6				1	2	3	4							1
7	8	9	10	11	12	13	5	6	7	8	9	10	11	2	3	4	5	6	7	8
14	15	16	17	18	19	20	12	13	14	15	16	17	18	9	10	11	12	13	14	15
21	22	23	24	25	26	27	19	20	21	22	23	24	25	16	17	18	19	20	21	22
28	29	30					26	27	28	29	30	31		23	24	25	26	27	28	29
														30						

July							August							September							
Su	Mo	Tu	We	Th	Fr	Sa	Su	Mo	Tu	We	Th	Fr	Sa	Su	Mo	Tu	We	Th	Fr	Sa	
												1	2	3	1	2	3	4	5	6	7
7	8	9	10	11	12	13	4	5	6	7	8	9	10	8	9	10	11	12	13	14	
14	15	16	17	18	19	20	11	12	13	14	15	16	17	15	16	17	18	19	20	21	
21	22	23	24	25	26	27	18	19	20	21	22	23	24	22	23	24	25	26	27	28	
28	29	30	31				25	26	27	28	29	30	31	29	30						

October							November							December						
Su	Mo	Tu	We	Th	Fr	Sa	Su	Mo	Tu	We	Th	Fr	Sa	Su	Mo	Tu	We	Th	Fr	Sa
						5						1	2	1	2	3	4	5	6	7
6	7	8	9	10	11	12	3	4	5	6	7	8	9	8	9	10	11	12	13	14
13	14	15	16	17	18	19	10	11	12	13	14	15	16	15	16	17	18	19	20	21
20	21	22	23	24	25	26	17	18	19	20	21	22	23	22	23	24	25	26	27	28
27	28	29	30	31			24	25	26	27	28	29	30	29	30	31				

- Yellow Indicates Curbside Yard Waste Collection Week
- Red Indicates Public Holiday — Trash will be delayed by one day for the rest of the week.
- Orange Indicates Household Hazardous Waste Collection Days at DPW



Home to Somerville's programs and initiatives to reduce Somerville's contribution to climate change and to develop our city's ability to prepare for the impacts of climate change.

[somerillema.gov/sustainaville](http://somerillema.gov/sustainaville)

## RECYCLING

Put All Your Recycling in the Blue Somerville Zero-Sort Cart:  
**PAPER, METAL, PLASTIC, and GLASS**

**Paper & Cardboard**



**Mixed Paper, Newspaper, Magazines, Boxes**  
empty and flatten

**Metal**



**Food and Beverage Cans**  
empty and rinse

**Plastic**



**Bottles, Jars, Jugs and Tubs**  
empty and replace cap

**Glass**



**Bottles and Jars** empty and rinse

**NO** items smaller than 2 inches such as loose bottle caps.

VISIT [somervillema.gov/wizard](http://somervillema.gov/wizard).

## NOT ALLOWED IN RECYCLING CART PUT IN TRASH



**No Hazardous Items**  
(No propane tanks, batteries, sharps, or chemicals)



**No Clothing**  
(Donation instead)



**No Food or Liquid**  
(Put in Trash or Compost)



**No Wires or Tangles**  
(Drop off at DPW)



**No Plastic Bags**  
(Do Not Bag Recyclables)



Scan here for more information about additional recyclable items and alternative recycling programs.

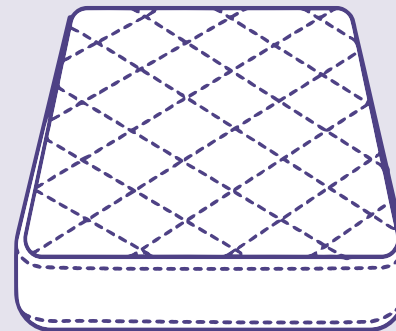
## SPECIAL ITEMS DISPOSAL GUIDELINES

- **Large Appliances (“white-goods”):** Washers & dryers, air conditioners, hot water heaters, refrigerators/freezers (with doors detached), dehumidifiers, stoves, etc. require a \$25.00 white-goods sticker available online, at DPW (check, credit/debit, or money order accepted—NO CASH), and City Hall (cash OK) during normal business hours.
- **TVs & Computer Monitors:** Call 311 to schedule free curbside pickup, or drop off as electronic waste.
- **Furniture/Bulky Items:** This free service is limited to two items per week. Place curbside with trash.
- **Electronic Waste:** To recycle, drop off small appliances (like toasters, coffee makers, etc.) and e-waste (like computer equipment, DVDs, and electronic cords) at DPW weekdays during regular business hours. Please bring proof of residency.
- **Holiday Trees:** Place undecorated live holiday trees with your trash in December or January. Do not bag. After January, please drop-off holiday trees at DPW yard.

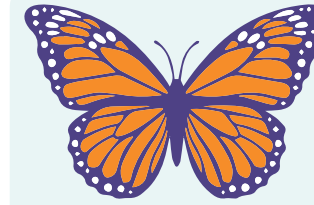
## MATTRESS RECYCLING

Somerville collects mattresses & boxsprings for free with recycling. Mattresses and boxsprings of all sizes (including crib mattresses) are banned from trash disposal or transport for disposal in Massachusetts.

- Residents must contact 311 in advance to schedule a free mattress or boxspring collection. To reach 311, call 617-666-3311, visit social media sites, 311 app, or visit [somervillema.gov/311](http://somervillema.gov/311).
- Mattresses/boxsprings will be collected curbside one day **after** regular trash day except for Friday – mattresses will be collected on the same day for residents with Friday trash/recycling collection days.
- Mattresses/boxsprings must be placed curbside by 7 AM on collection day. They can be placed curbside as early as 4 PM the night before. Futon mattresses should be put out with regular trash.
- This service is only available for households that have city-managed trash collection services.



## HELP REMOVE BLACK SWALLOW-WORT



This invasive plant is a threat to Monarch butterflies and other native pollinators. Learn how to identify and remove Black Swallow-Wort.



Visit [somervillema.gov/news/somerville-residents-help-stop-black-swallow-wort-summer](http://somervillema.gov/news/somerville-residents-help-stop-black-swallow-wort-summer)

## COMMUNITY ELECTRICITY

The **Community Choice Electricity (CCE)** program provides new electricity supply options and more renewable energy to our residents and businesses. Through July 2022, Somerville CCE’s default product has saved participants nearly \$11 million in savings, compared to Eversource Basic Service, while also containing more renewable energy. Future savings cannot be guaranteed because future Basic Service rates are unknown.  
[cce.somervillema.gov](http://cce.somervillema.gov)



## ACCESSIBILITY SERVICES



Persons with disabilities who need auxiliary aids and services for effective communication (i.e., CART, ASL), written materials in alternative formats, or reasonable modifications in policies and procedures in order to access the programs, activities, and meetings of the City of Somerville should please contact Adrienne Pomeroy in advance at 617-625-6600 x 2059 or [apomeroy@somervillema.gov](mailto:apomeroy@somervillema.gov).

## TRANSLATIONS

Translated versions of this guide can be found at [somervillema.gov/trash-and-recycling](http://somervillema.gov/trash-and-recycling). Printed copies will also be available at City Hall, City Hall Annex, and DPW office building.

