

# GREEN LINE EXTENSION

# COMMUNITY MEETING

## HOSTED BY THE CITY OF SOMERVILLE

Wednesday, August 29, at 6 p.m.  
Community Baptist Church  
31 College Ave.

In late 2018, the Broadway Bridge east of Ball Sq. is expected to close for a full year for GLX construction. Let's talk detours, support for businesses, & more.

For ADA accommodations, please contact Nancy Salamoun via 311 at 617-666-3311 or NSalamoun@SomervilleMA.gov TTY 866-808-4851



@SomervilleCity



fb.com/SomervilleCity



[SOMERVILLEMA.GOV/GLX](http://SOMERVILLEMA.GOV/GLX)



HAVE QUESTIONS ABOUT GLX?  
FIND US AT THESE EVENTS THIS SUMMER

## JULY

Saturday 7/14: ArtBeat, Davis Sq., 11am

Wednesday 7/18: GLX Public Mtg., Medford City Hall, 6:30pm

Thursday 7/26: Drop-In Q&A, Magoun Sq., 4:30-6:30pm

## AUGUST

Sunday 8/5: SomerStreets, Holland St., 2pm

Saturday 8/11: Ignite Festival, Union Sq., 6pm

Saturday 8/18: Drop-In Q&A, Ball Sq., 9-11am

## SEPTEMBER

Saturday 9/8: Riverfest, Assembly Row, TBD

Sunday 9/9: Rock & Roll Yard Sale, Union Sq., 11am

Saturday 9/15: Drop-In Q&A, Ball Sq., 9-11am

Sunday 9/16: SomerStreets, Highland Ave., 2pm

Saturday 9/22: Fluff Festival, Union Sq., 3pm

Saturday 9/29: Evolution of Hip-Hop Festival, Union Sq., 3pm

[SOMERVILLEMA.GOV/GLX](http://SOMERVILLEMA.GOV/GLX)



fb.com/SomervilleCity



@SomervilleCity



For ADA accommodations, please contact Nancy Salamoun via 311 at 617-666-3311 or NSalamoun@SomervilleMA.gov TTY 866-808-4851



# GLX SERVICE SCHEDULED TO OPEN IN 2021



**WHY DOES THE BRIDGE NEED TO CLOSE?**



# COMMUTER RAIL TRACK SHIFT







# Broadway Bridge Detours Traffic





# Broadway Bridge Detours – Pedestrians and Bikers

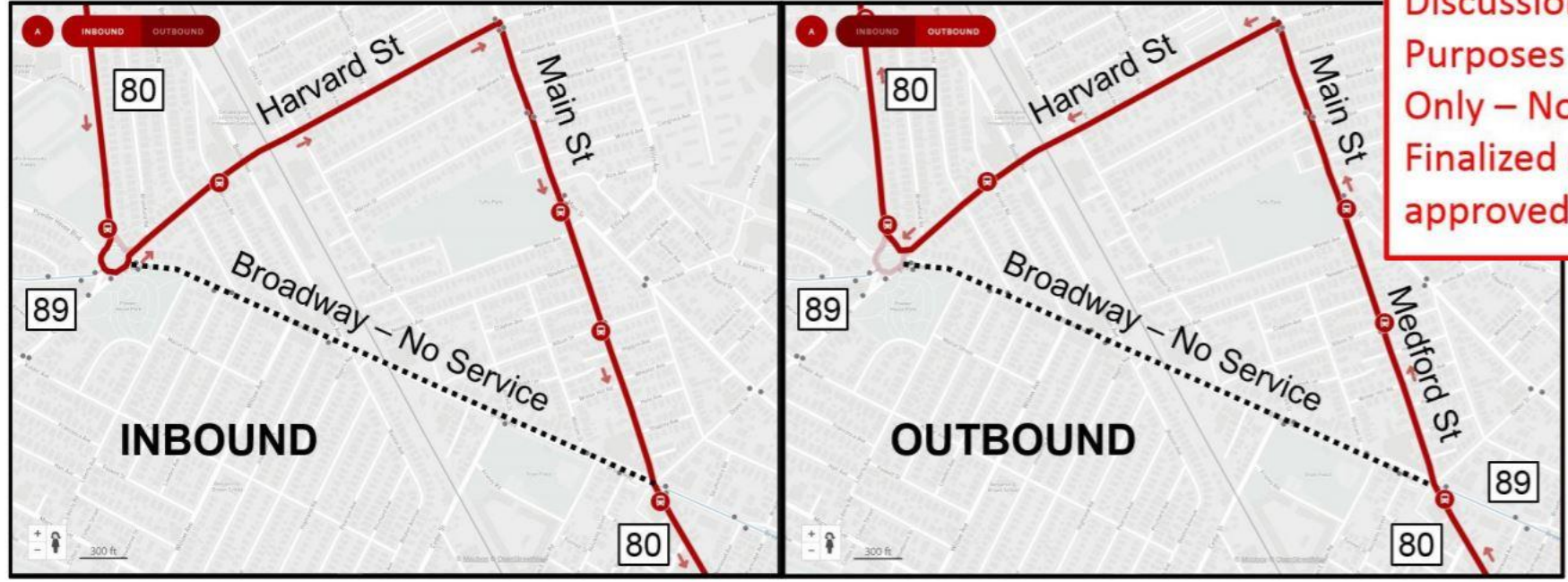




# Broadway Bridge Detours – MBTA Bus Routes 80, 89

## Option 1 – Diversion via Warner, Harvard, Main, and Medford Streets (80 & 89)

DRAFT – For Discussion Purposes Only – Not Finalized or approved

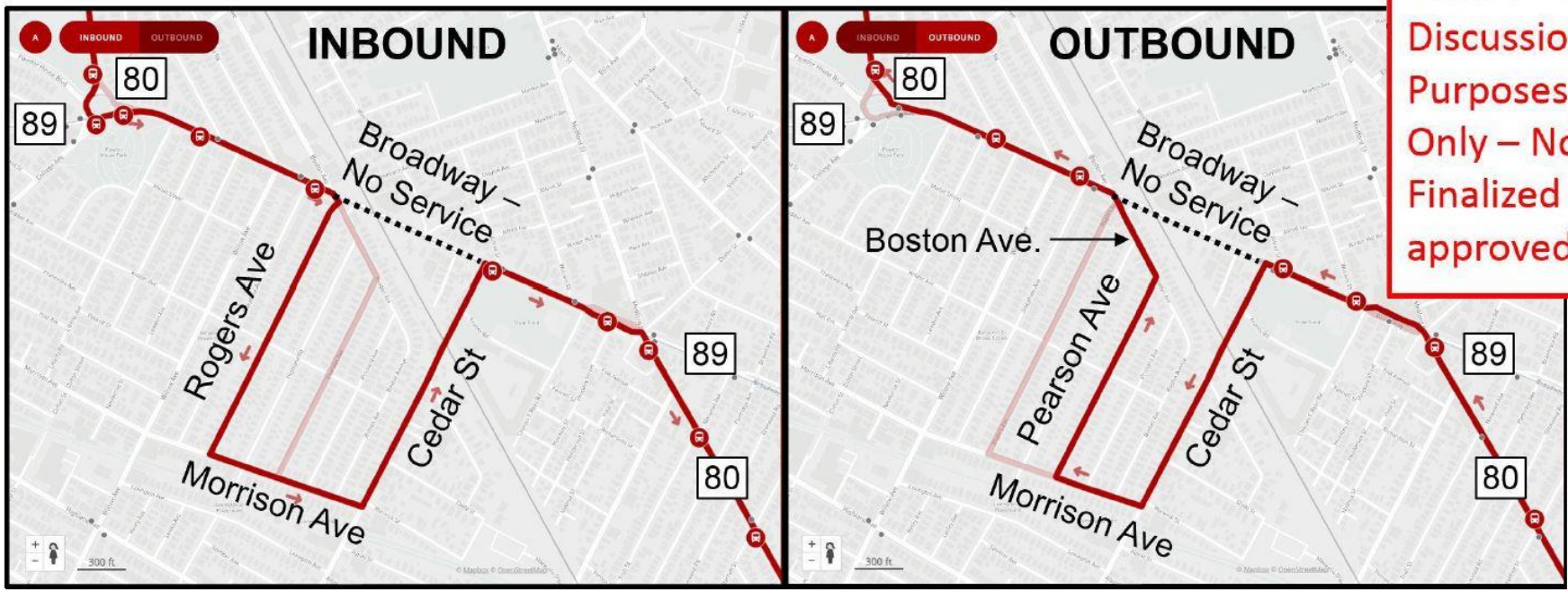


8-10 minutes extra travel time, multiple stop closures, but most straightforward to implement



# Broadway Bridge Detours – MBTA Bus Routes 80, 89

## Option 2 – Diversion via Boston Ave., Rogers/Pearson Aves., Morrison Ave., and Cedar Street



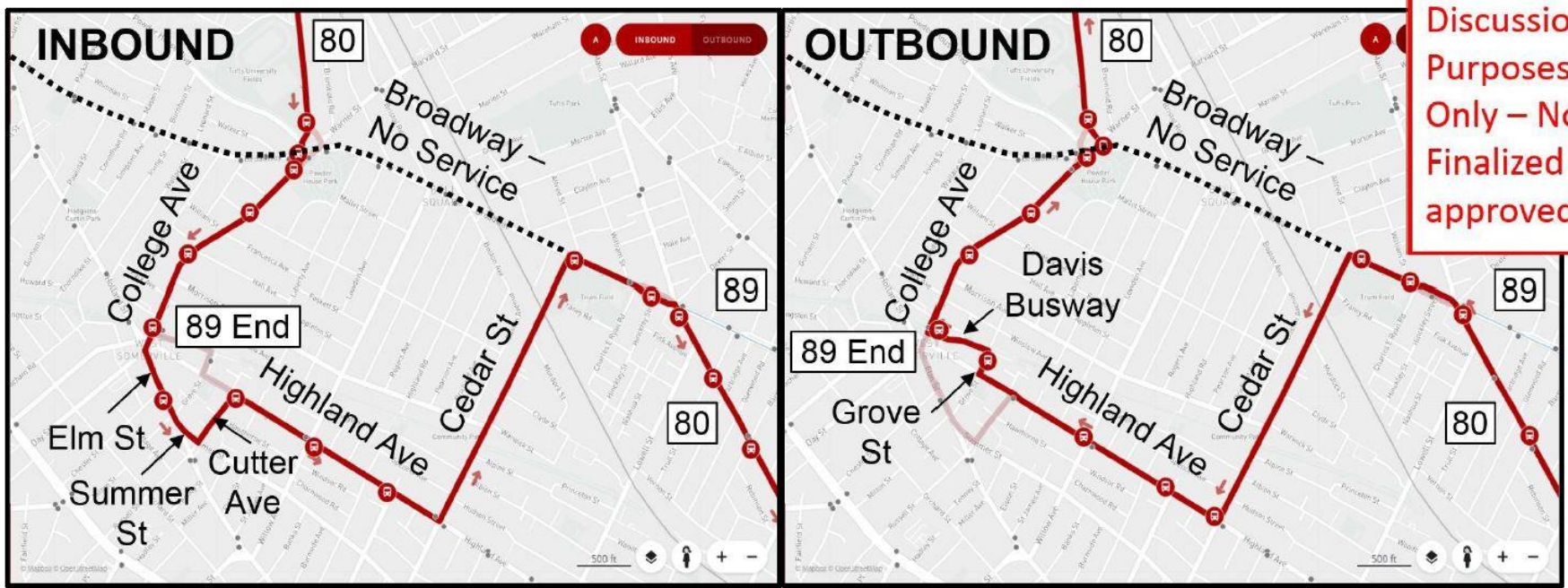
DRAFT – For Discussion Purposes Only – Not Finalized or approved

4-6 minutes extra travel time, no stop closures, but more complex implementation



# Broadway Bridge Detours – MBTA Bus Routes 80, 89

## Option 3 – Diversion via Davis Square, Highland Ave., and Cedar St. (80 & 89)



10-15 minutes extra travel time, multiple stop closures, complex scheduling and implementation





## Route 80 & 89 Diversions for Broadway Bridge Closure

---

Broadway Bridge carries Route 80 (Arlington Center – Lechmere) and two variations of Route 89, Clarendon Hill – Sullivan or Davis Busway – Sullivan

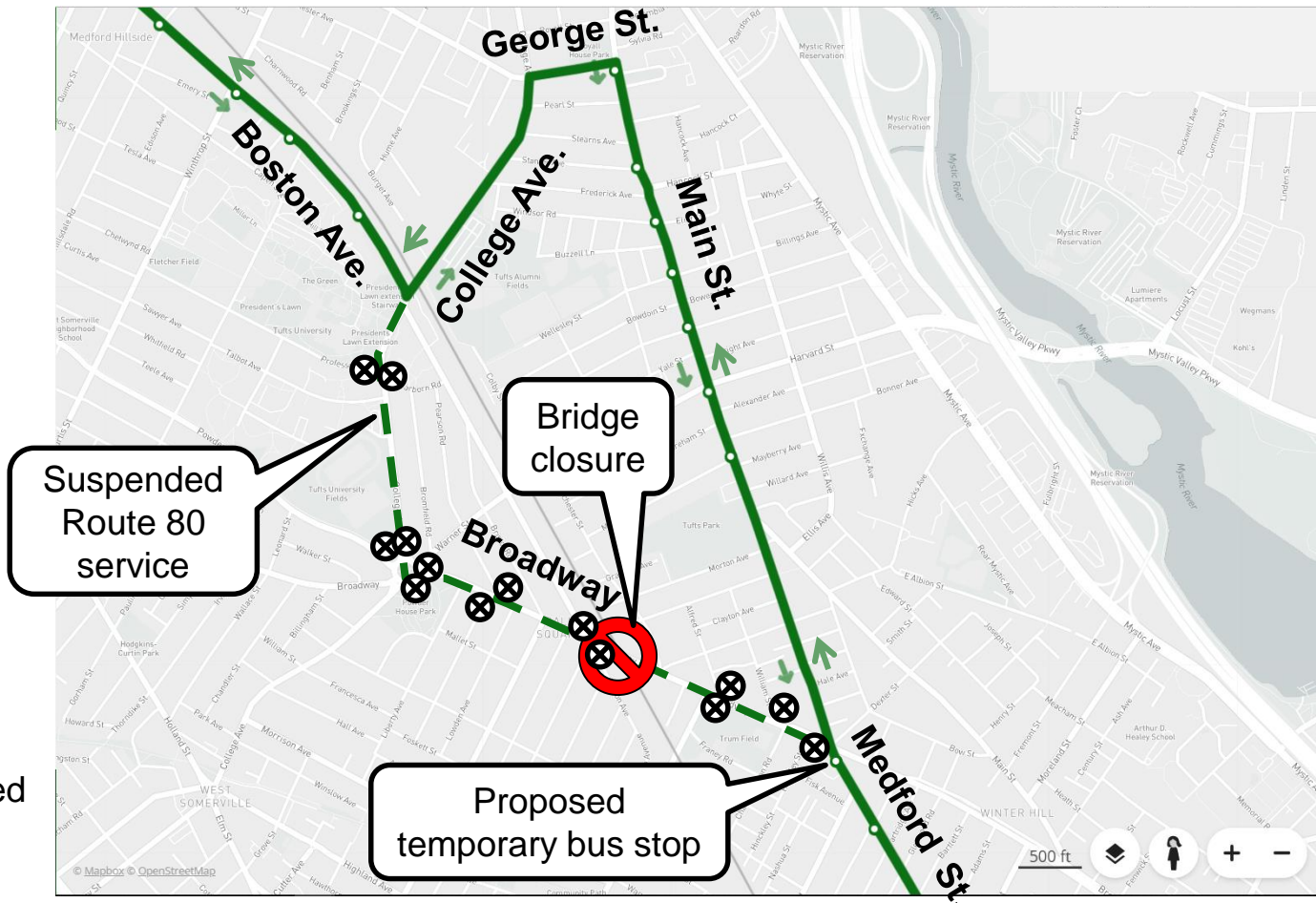
### **General goals for diversions:**

- Operate safely through the communities we serve
- Minimize length of diversion to preserve customers travel times, service frequency
- Minimize omitted stops to reduce impacted ridership
  - Some customers may use alternate bus routes with less overall frequency due to diversion
  - Other customers may walk to alternate stops
- Solidify plans in advance so that automated systems (automated stop announcements, trip planners, next bus predictions, customer apps, dispatching tools) function during the detour



## Route 80: Arlington Center-Lechmere

Proposed Diversion via College Ave., George St., Main St., and Medford St.



⊗ Affected stops

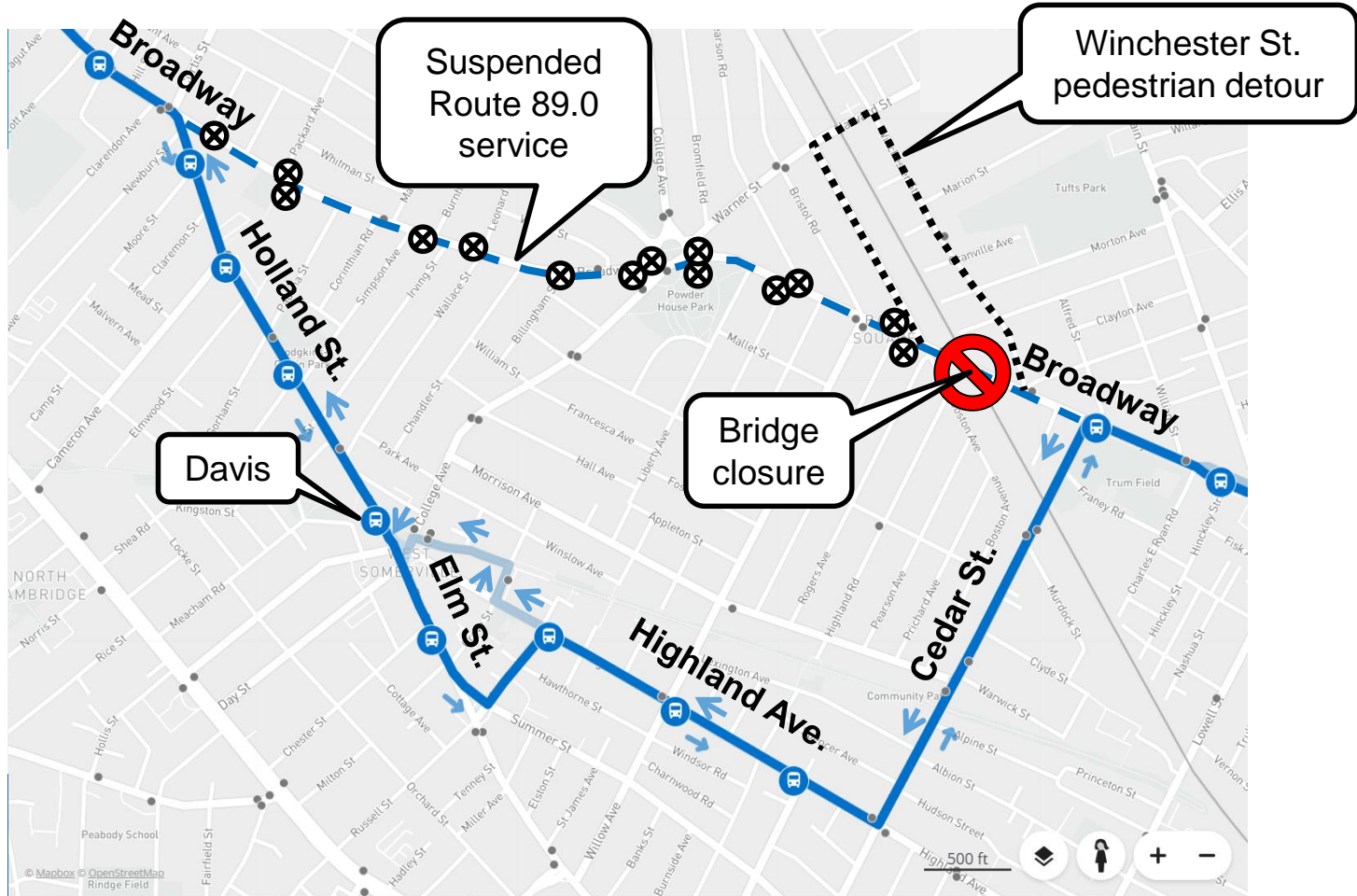
**Proposed—for discussion only**





## Route 89: Clarendon Hill - Sullivan variant

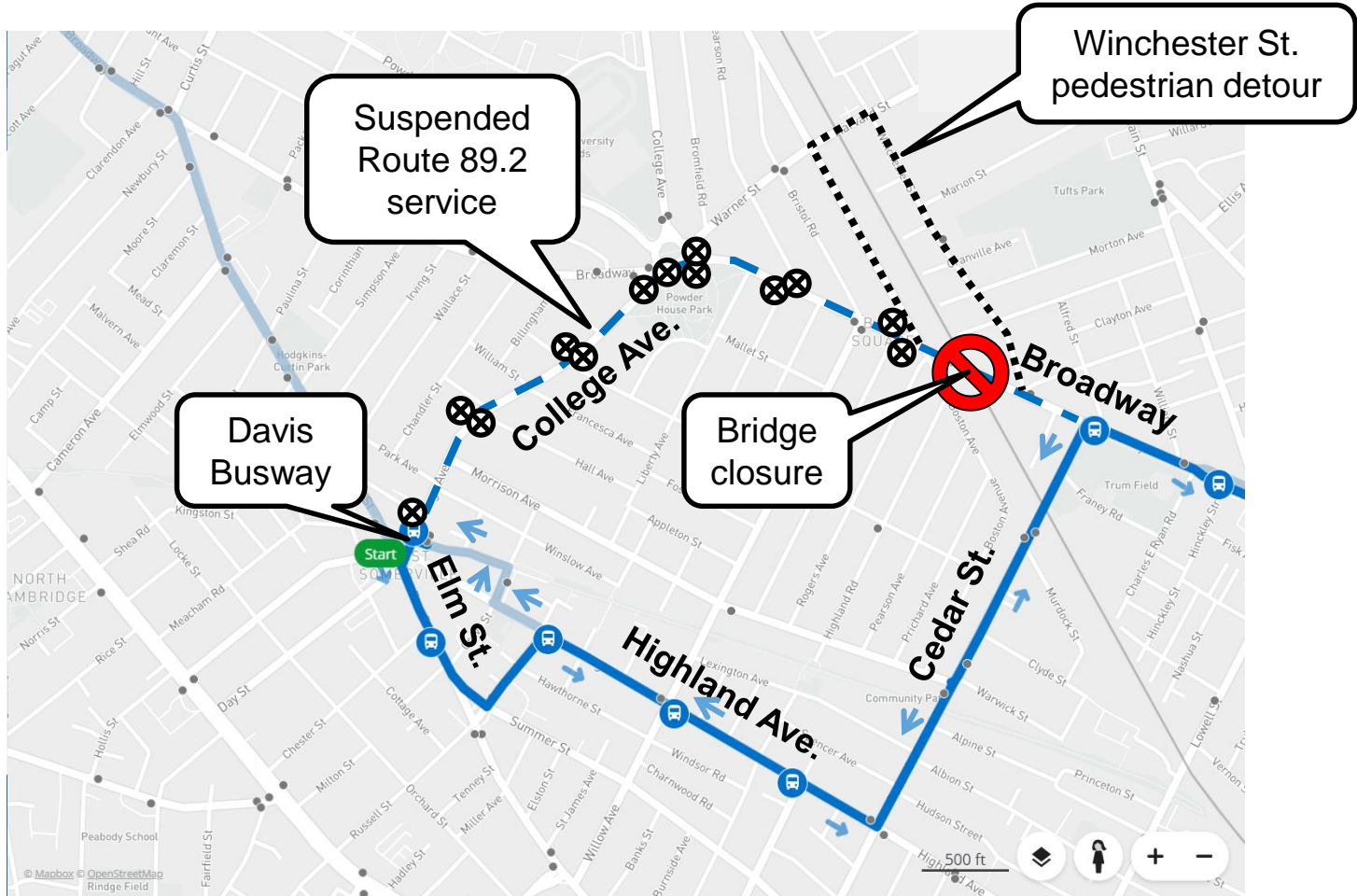
Proposed Diversion via Holland Ave., Davis, Highland Ave., and Cedar St.



**Proposed—for discussion only**



# Route 89: Davis Busway-Sullivan variant Proposed Diversion via Highland Ave. and Cedar St.



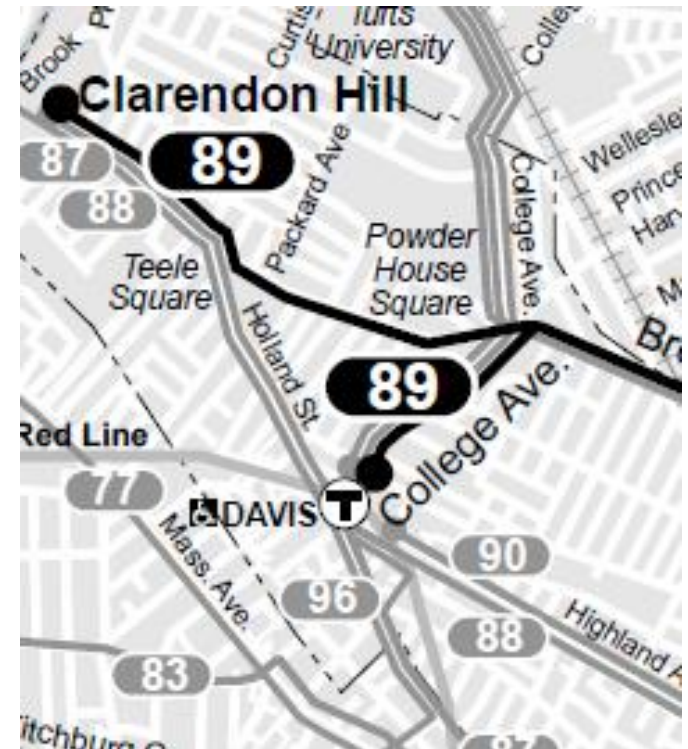
**Proposed—for discussion only**





## Route 89 Better Bus Project Ideas: Clarendon/Davis

- Route 89 trips to Davis were started in 2005; previously all service operated to Clarendon Hill.
- The Davis connection has proven successful and is a critical connection from Broadway and Winter Hill to the Red Line.
- Independent of the Broadway Bridge work, the Better Bus Project is looking to simplify routes, increase legibility, improve service quality, grow ridership and match service provision to demand.

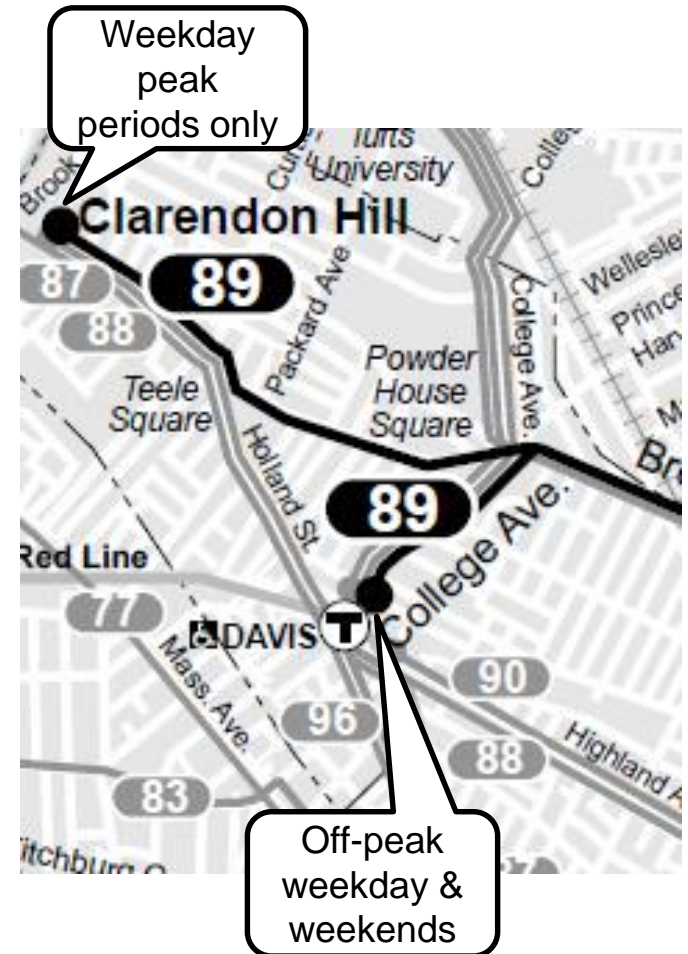


**Proposed—for discussion only**



## Route 89 Better Bus Project Ideas: Clarendon/Davis

- One concept under discussion: divert all off-peak service to Davis instead of Clarendon Hill.
- Clarendon Hill customers can use Routes 87 & 88 to access Davis Square for Route 89.
- Broadway customers between Teele Sq. and Powderhouse can walk to Holland St for Route 87 & 88, or to Davis or Broadway to access Route 89
- Peak period service to Clarendon Hill would remain when Routes 87 & 88 at Teele Sq. are crowded.

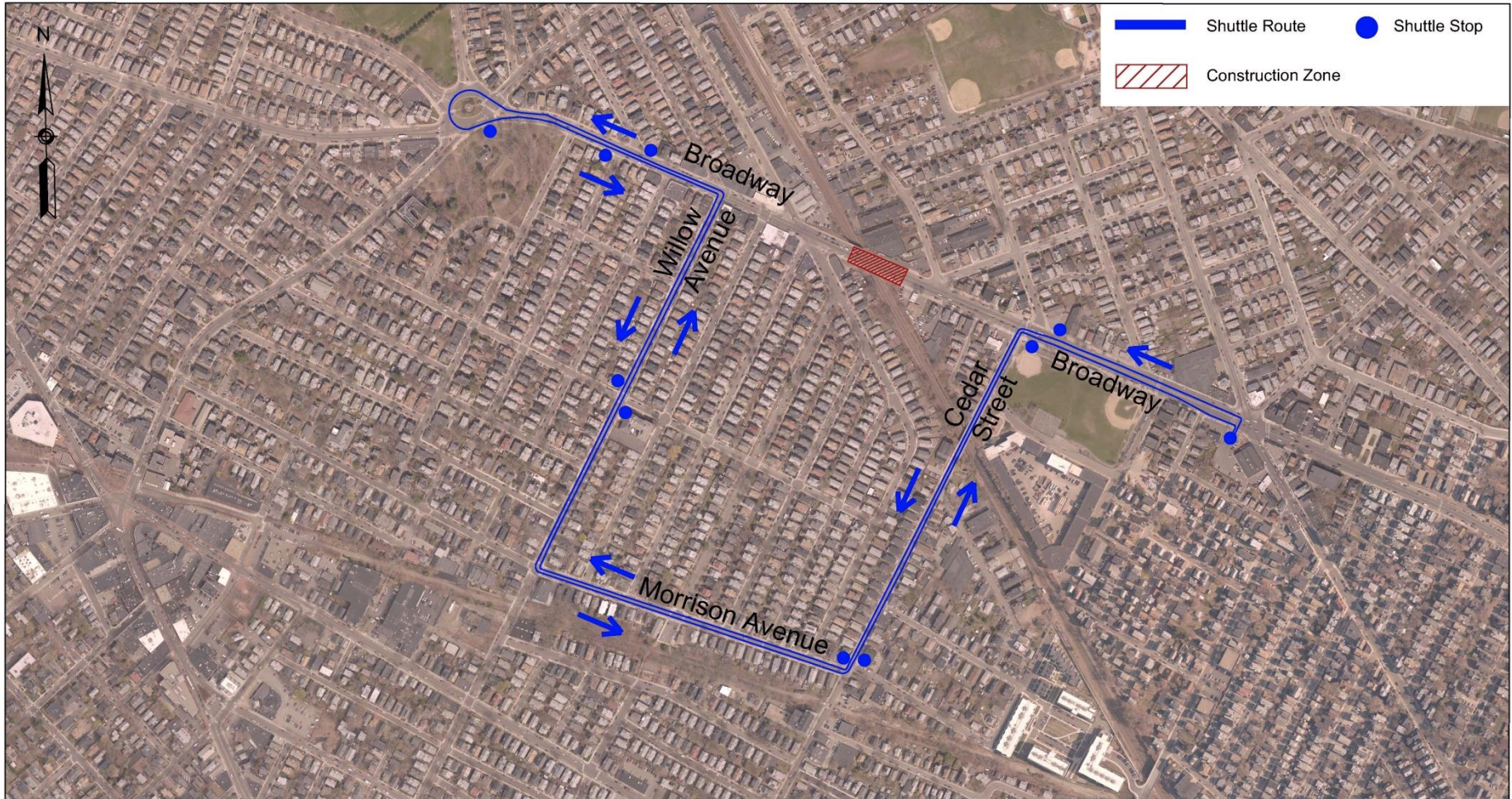


**Proposed—for discussion only**



# PEDESTRIAN & BICYCLE ACCESS

# SHUTTLE SERVICE CONCEPT



Broadway Bridge Closure  
Proposed Shuttle Route

Date: August 2018





# **BUS DIVERSIONS, IMPACTS, STRATEGIES**

# BUS LANE PROPOSAL FOR WINTER HILL



EXAMPLE FROM EVERETT, MA



# AUTOMOBILE DETOUR & STRATEGIES

# Broadway Bridge Detours Traffic





# ADDING GREEN LIGHTS IN DAVIS SQUARE





# ORGANIZING GREEN LIGHTS ON DETOUR



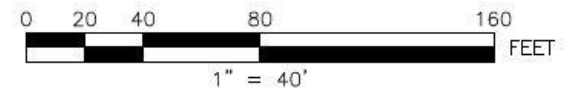


# POWDER HOUSE ROTARY -> "ROUNDAABOUT"



Powder House Boulevard Rotary  
Modern Roundabout Concept\_Alt 2

Date: 7/17/2018



# NEIGHBORHOOD CUT-THROUGH TRAFFIC



# COLLECTING DATA ON MOBILITY & SAFETY



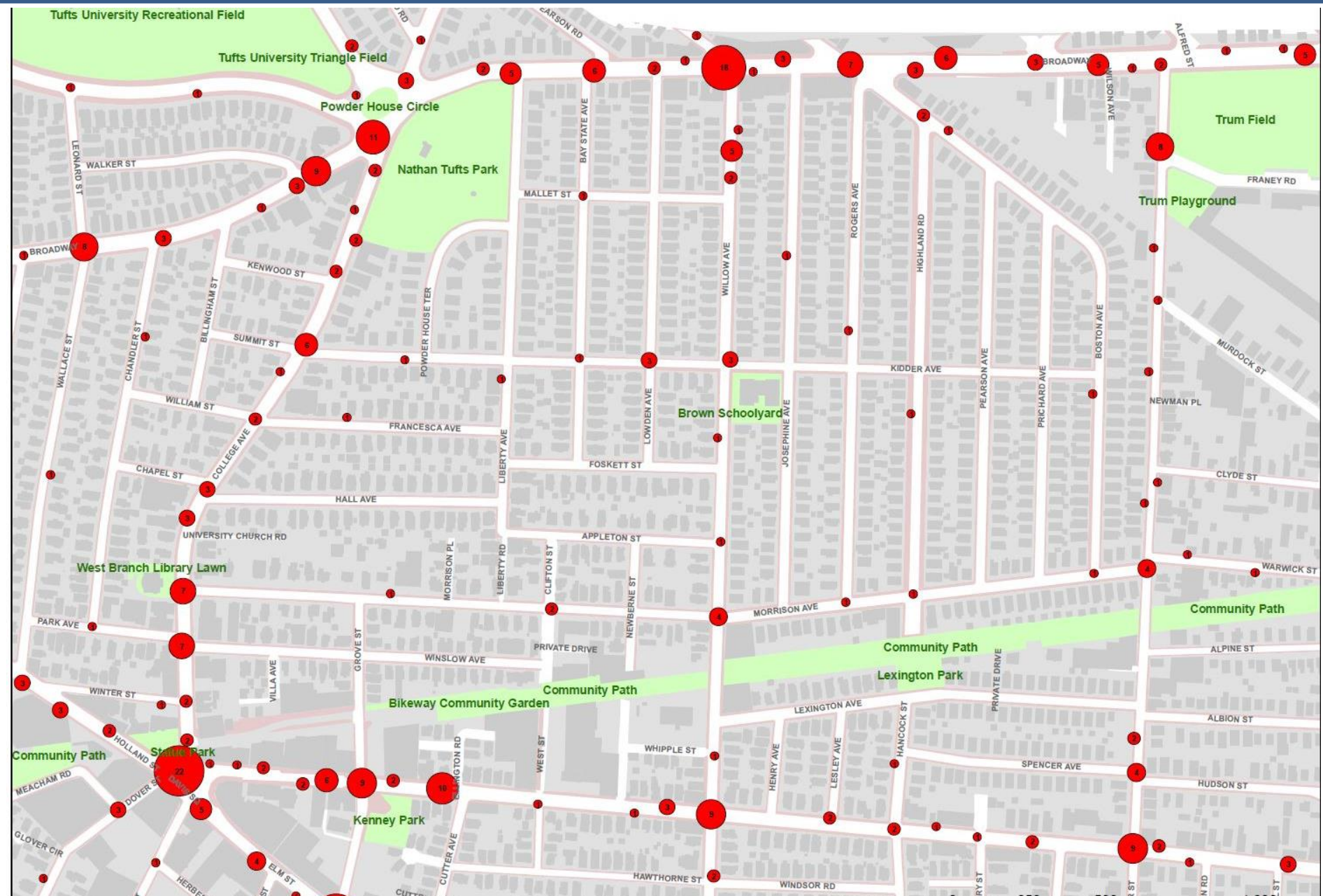


# TRAFFIC VOLUME / SPEED DATA: 2017-2018





# POLICE DATA: ALL CRASHES, 2013-2017





# POLICE DATA: INJURY CRASHES, 2013-2017





# POLICE DATA: PEDESTRIAN CRASHES, 2013-2017



# POLICE DATA: BICYCLE CRASHES, 2013-2017





# TRAFFIC-CALMING MEASURES

# TRAFFIC SAFETY: HIGH-VISIBILITY CROSSWALKS



CROSS STREET, EAST SOMERVILLE



# TRAFFIC SAFETY: INTERSECTION “NECK-DOWNS”

*Historic example*

*Proposed*



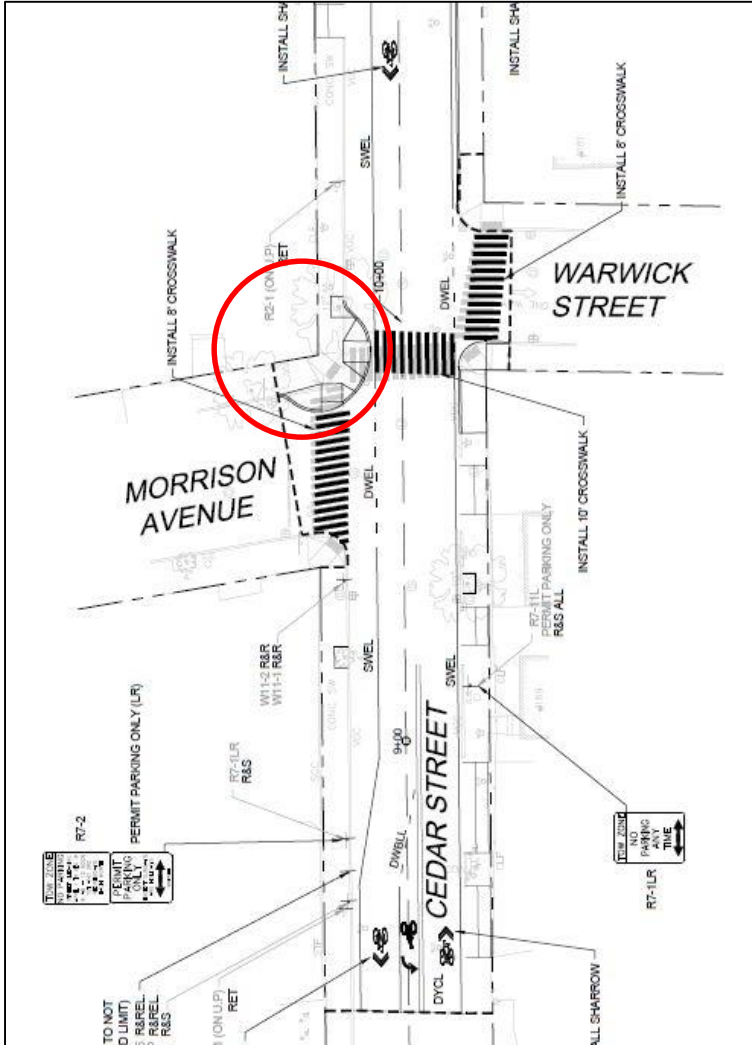
PEARSON @ BROADWAY

BRISTOL / WILLOW @ BROADWAY



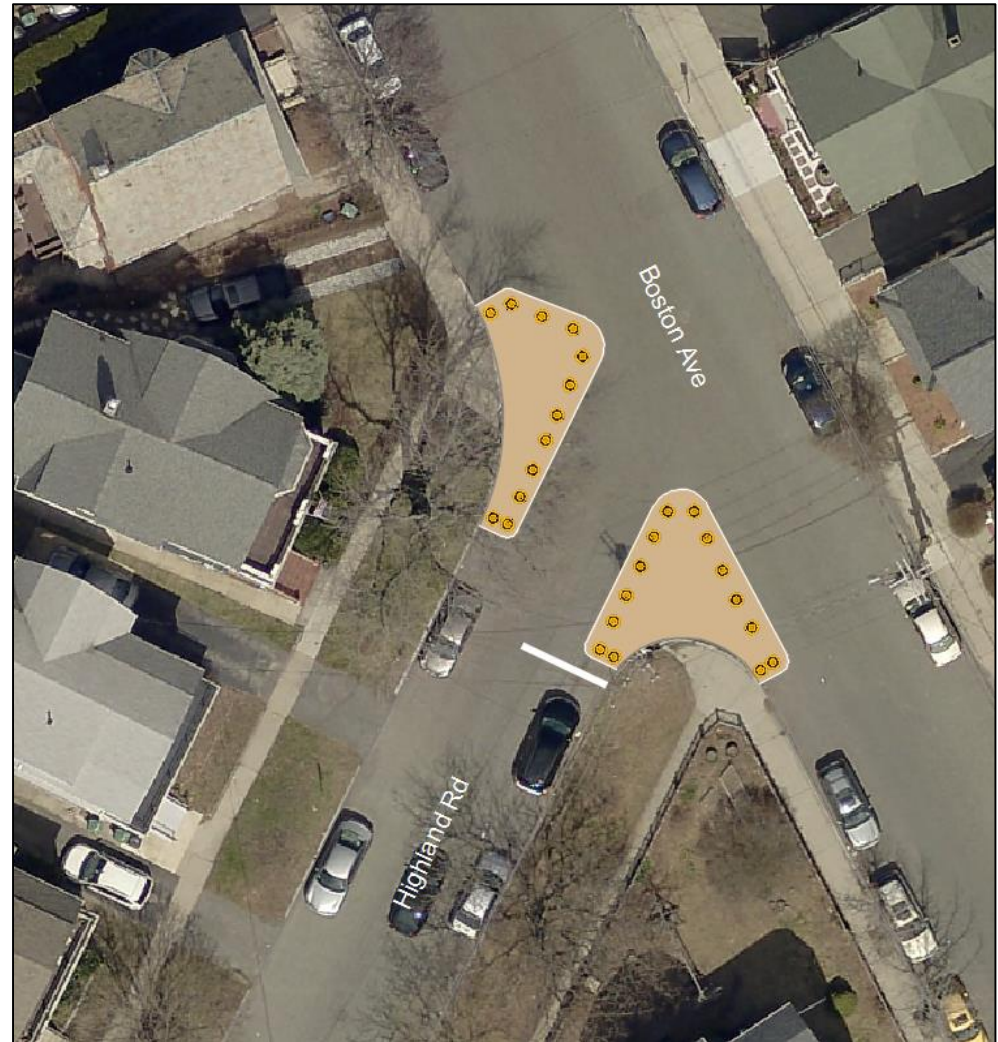
# TRAFFIC CALMING: GATEWAY “DIVERTERS”

Concrete version (existing)



CEDAR @ MORRISON

Painted version (proposed)

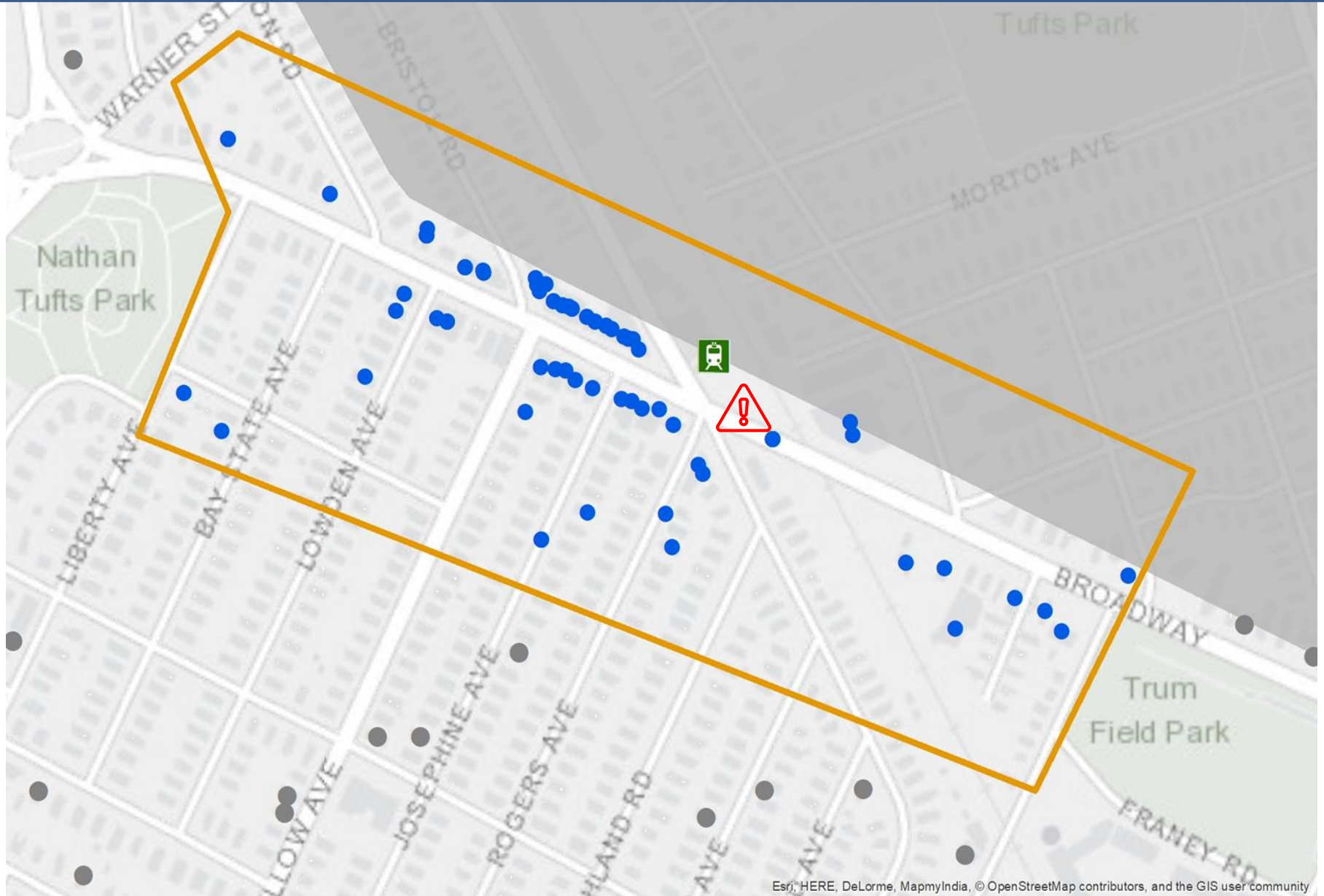


HIGHLAND RD. @ BOSTON AVE.



# **BUSINESS ENGAGEMENT & SUPPORT**

# 70 BUSINESSES TO ENGAGE & SUPPORT





# BALL SQUARE MERCHANTS ASSOCIATION



# PROMOTION & TECHNICAL ASSISTANCE



**OPEN**

**LOYAL2LOCAL SOMERVILLE**

## PREPARING YOUR BUSINESS FOR **CONSTRUCTION**

 **A FREE WORKSHOP** 

Join us for an expert-led workshop on navigating disruptions related to construction. We will discuss **contracts, business insurance, and financial strategies** for managing your business through uncertain times.

---

Thursday, May 31 | 2:00 - 4:00pm  
Somerville Media Center  
90 Union Square  
Somerville, MA

---

Jessica Manganello, JD - Business attorney, founding partner of New Leaf Legal, LLC.  
Douglas Soons, JD - Investment manager and property & casualty insurance agent with Revolution Capital, Inc.

Amy Witherbee, JD, PhD - Financial planner and investment manager with Revolution Capital, Inc.

Contact [NSchonberger@somervillema.gov](mailto:NSchonberger@somervillema.gov) or 617-625-6600 ext. 2537 with any questions.



The City of Somerville  
Office of Strategic Planning &  
Community Development



**SAVE THE DATE: SUN. 9/30 - Find "A Ball for Squares" on Facebook to get updates**



# FOOT TRAFFIC: "POP-UP" OPEN SPACE



DAVIS SQUARE, 2016

# CONTACTS LIST



- [Greenlineextension.org](http://Greenlineextension.org) (sign up for alerts here)
- 24/7 hotline: 1-855-GLX-INFO (459-46360)
- Email @ [info@glxinfo.com](mailto:info@glxinfo.com)



- [Somervillema.gov/glx](http://Somervillema.gov/glx) (sign up for alerts here)
- [construction@somervillema.gov](mailto:construction@somervillema.gov)
- 3-1-1 (or 617-666-3311)
- Facebook: SomervilleCity
- Twitter: @Somervillecity

## City of Somerville Economic Development

- Email list for business-specific resources: [bit.do/bizconstructionsomerville](http://bit.do/bizconstructionsomerville)
- General Economic development email list: <http://bit.do/somerbiz>
- Business-specific questions? Nick Schonberger, [Nschonberger@somervillema.gov](mailto:Nschonberger@somervillema.gov) or 617-625-6600 ext. 2537

## GLX Community Working Group

- Ball Square Neighborhood representative is Jennifer Dorsen, [Jdorsen@gmail.com](mailto:Jdorsen@gmail.com)
- Magoun Square Neighborhood representative is Ryan Dunn, [ryp.dunn@gmail.com](mailto:ryp.dunn@gmail.com)
- At-Large representative is Michaela Bogosh, [michaela.bogosh@gmail.com](mailto:michaela.bogosh@gmail.com)



# GREEN LINE EXTENSION

# COMMUNITY MEETING

HOSTED BY THE CITY OF SOMERVILLE

Wednesday, August 29, at 6 p.m.  
Community Baptist Church  
31 College Ave.

In late 2018, the Broadway Bridge east of Ball Sq. is expected to close for a full year for GLX construction. Let's talk detours, support for businesses, & more.

For ADA accommodations, please contact Nancy Salamoun via 311 at 617-666-3311 or NSalamoun@SomervilleMA.gov TTY 866-808-4851



@SomervilleCity



fb.com/SomervilleCity



[SOMERVILLEMA.GOV/GLX](http://SOMERVILLEMA.GOV/GLX)



HAVE QUESTIONS ABOUT GLX?  
FIND US AT THESE EVENTS THIS SUMMER

## JULY

Saturday 7/14: ArtBeat, Davis Sq., 11am

Wednesday 7/18: GLX Public Mtg., Medford City Hall, 6:30pm

Thursday 7/26: Drop-In Q&A, Magoun Sq., 4:30-6:30pm

## AUGUST

Sunday 8/5: SomerStreets, Holland St., 2pm

Saturday 8/11: Ignite Festival, Union Sq., 6pm

Saturday 8/18: Drop-In Q&A, Ball Sq., 9-11am

## SEPTEMBER

Saturday 9/8: Riverfest, Assembly Row, TBD

Sunday 9/9: Rock & Roll Yard Sale, Union Sq., 11am

Saturday 9/15: Drop-In Q&A, Ball Sq., 9-11am

Sunday 9/16: SomerStreets, Highland Ave., 2pm

Saturday 9/22: Fluff Festival, Union Sq., 3pm

Saturday 9/29: Evolution of Hip-Hop Festival, Union Sq., 3pm

[SOMERVILLEMA.GOV/GLX](http://SOMERVILLEMA.GOV/GLX)



fb.com/SomervilleCity



@SomervilleCity



For ADA accommodations, please contact Nancy Salamoun via 311 at 617-666-3311 or NSalamoun@SomervilleMA.gov TTY 866-808-4851